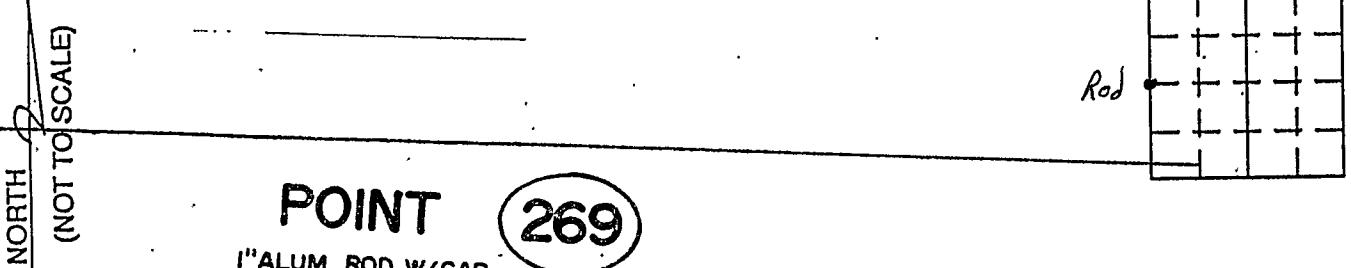


VERMILLION COUNTY, IND.
"MONUMENT RECORD"
 OF

LAND SURVEY MONUMENTS SITUATED IN SECTION 14, TOWNSHIP 15N,
 RANGE 9W, OF THE 2 PRINCIPAL MERIDIAN,
 COUNTY, INDIANA

MONUMENT DESCRIPTION AND REMARKS: Rod w/ Cap NW corner SW 1/4
Done By: Schiender Engineering Corp. 8/29/80
see: Green Map Cabinet Drawer #1

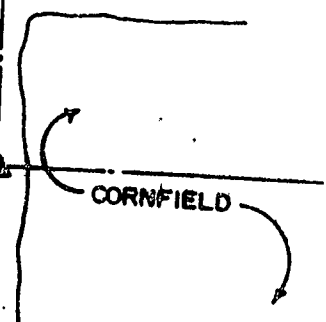
RECOVERY TIE DRAWING



POINT 269

1" ALUM. ROD W/CAP.
 SET IN CONCRETE
 5'± EAST OF EDGE
 OF GRAVEL ROAD

- #3 P.K. NAIL IN WASHER IN TREE
- #2 P.K. NAIL IN WASHER IN TREE
- #1 P.K. NAIL IN WASHER IN TREE



REFERENCE	DISTANCE	DESCRIPTION
1	48.23'	P.K. NAIL IN WASHER IN TREE (HEDGE APPLI
2	39.08'	

STATE OF _____
 COUNTY OF _____ SS

I, _____, HEREBY
 CERTIFY THAT THIS DOCUMENT WAS PREPARED
 UNDER MY DIRECTION IN ACCORDANCE WITH
 IND. CODE 36-2-12-11-(D)-(3) AND THE ABOVE
 DATA IS GIVEN UNDER MY HAND AND SEAL
 THIS _____ DAY OF _____, 19____ A.D.

INDIANA REGISTERED LAND SURVEYOR NO. _____
 OR _____
 UNITED STATES GOVERNMENT AGENCY

TITLE

SPACE RESERVED FOR
 RECORDING OFFICER

DATE FILED _____

