

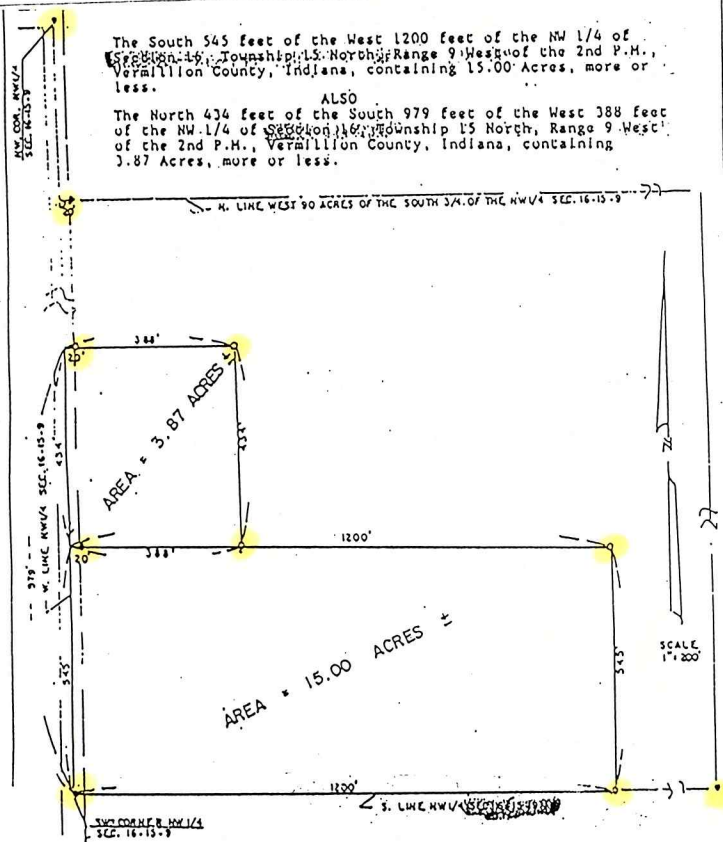
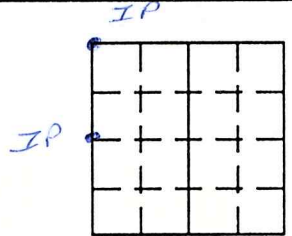
**VERMILLION COUNTY, IND.
"MONUMENT RECORD"
OF**

LAND SURVEY MONUMENTS SITUATED IN SECTION 16, TOWNSHIP 15 N,
RANGE 9 W, OF THE 2ND PRINCIPAL MERIDIAN, Vermillion
COUNTY, INDIANA

MONUMENT DESCRIPTION AND REMARKS: Charles J. Becker for Rick
Swinford Recorded May 22, 1997 Sur. # 1, P. 355 + 356
Iron Pin NW Corner of NW 1/4, Iron pin at SW corner NW 1/4,
Several Iron pins Found + Set

RECOVERY TIE DRAWING

NORTH
(NOT TO SCALE)



STATE OF _____
COUNTY OF _____ SS

I, Charles J. Becker, HEREBY
CERTIFY THAT THIS DOCUMENT WAS PREPARED
UNDER MY DIRECTION IN ACCORDANCE WITH
IND. CODE 36-2-12-11-(D)-(3) AND THE ABOVE
DATA IS GIVEN UNDER MY HAND AND SEAL

THIS _____ DAY OF _____, 19 _____ A.D.

INDIANA REGISTERED LAND SURVEYOR NO. 50094

OR _____
UNITED STATES GOVERNMENT AGENCY

TITLE

SPACE RESERVED FOR
RECORDING OFFICER

DATE FILED _____

