

VERMILLION COUNTY, IND. "MONUMENT RECORD" OF

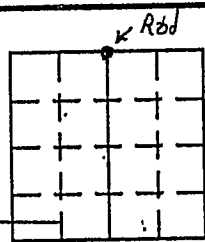
LAND SURVEY MONUMENTS SITUATED IN SECTION 22, TOWNSHIP 15N

RANGE 9W, OF THE 2 PRINCIPAL MERIDIAN,

COUNTY, INDIANA

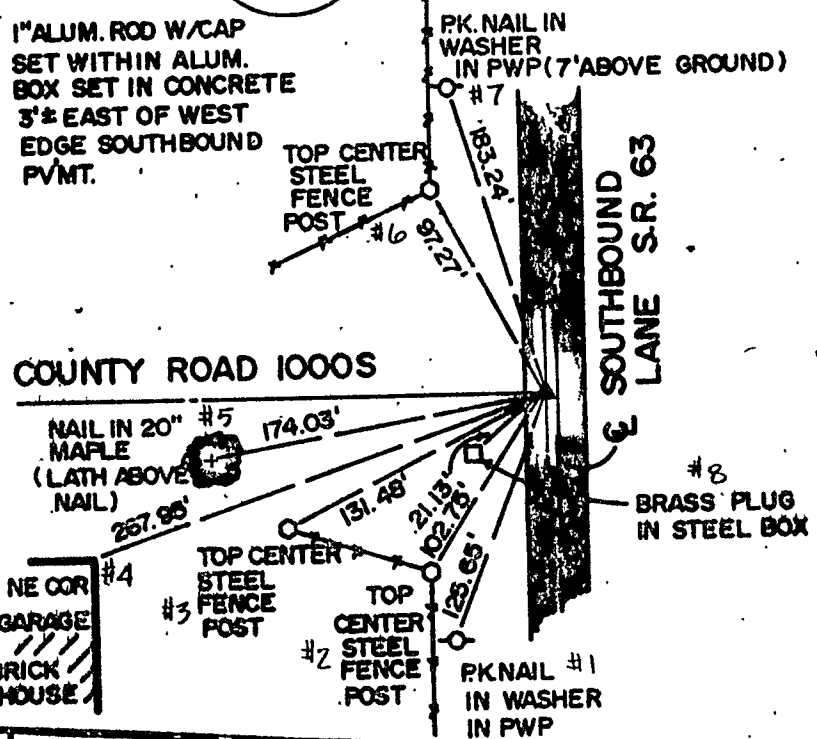
MONUMENT DESCRIPTION AND REMARKS: Rod Found (see Below) NW corner NE 1/4
Done By: Schneider Engineering Corp. 8/29/80
See: Green Map Cabinet Drawer #1

RECOVERY TIE DRAWING



NORTH 2
(NOT TO SCALE)

POINT 201



REFERENCE	DISTANCE	DESCRIPTION
1	125.65'	P.K. NAIL IN WASHER IN PWP
2	107.75'	TOP CENTER STEEL FENCE POST

STATE OF _____
 COUNTY OF _____ SS

I, _____, HEREBY
 CERTIFY THAT THIS DOCUMENT WAS PREPARED
 UNDER MY DIRECTION IN ACCORDANCE WITH
 IND. CODE 36-2-12-11-(D)-(3) AND THE ABOVE
 DATA IS GIVEN UNDER MY HAND AND SEAL
 THIS _____ DAY OF _____, 19____ A.D.

INDIANA REGISTERED LAND SURVEYOR NO. _____

OR _____
 UNITED STATES GOVERNMENT AGENCY

TITLE _____

SPACE RESERVED FOR
 RECORDING OFFICER

DATE FILED: _____

