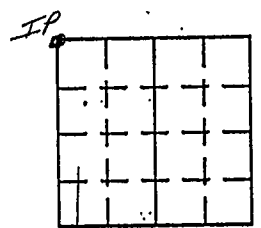


VERMILLION COUNTY, IND.  
**"MONUMENT RECORD"**  
 OF

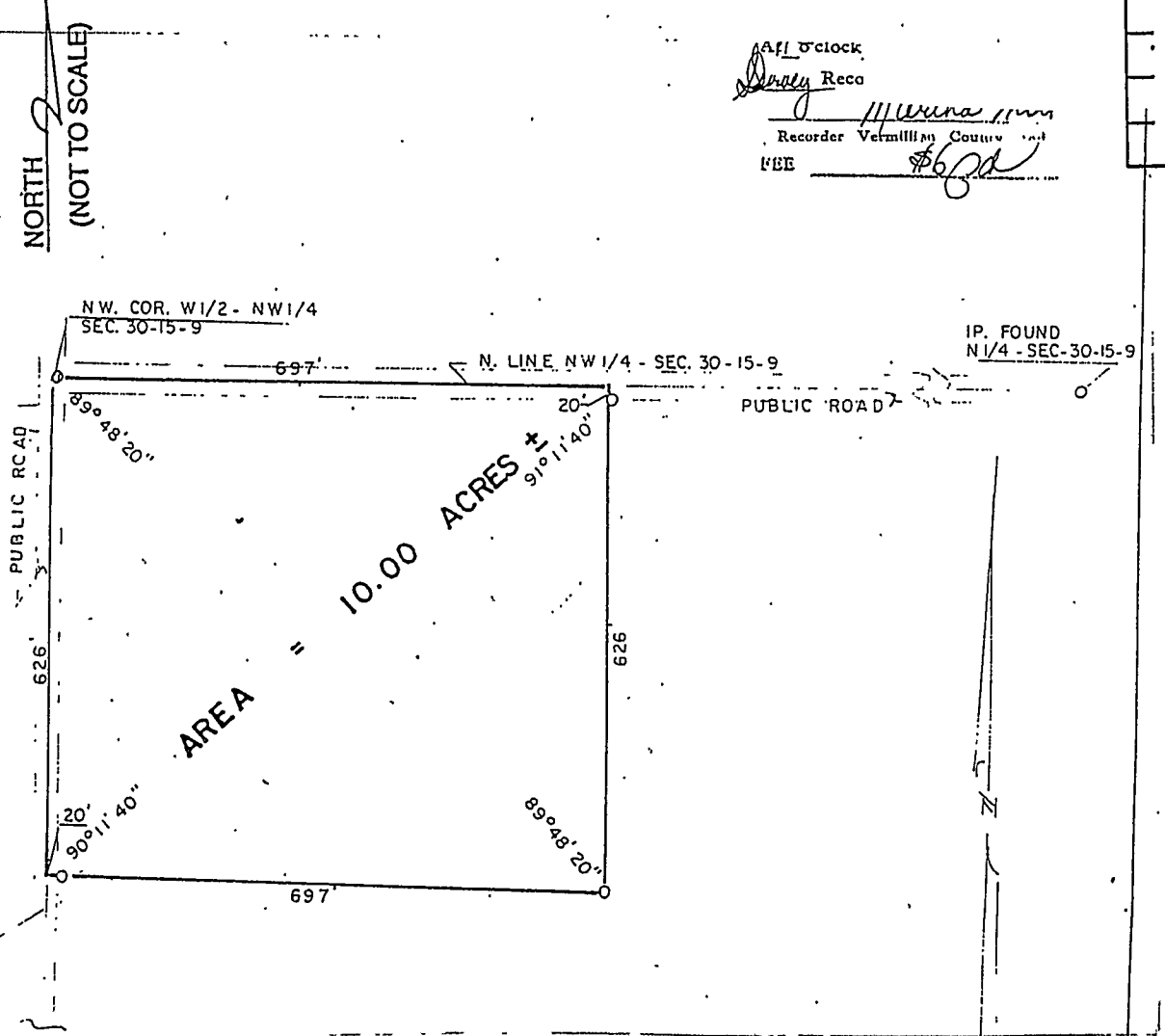
LAND SURVEY MONUMENTS SITUATED IN SECTION 30, TOWNSHIP 15N,  
 RANGE 9W, OF THE 2 PRINCIPAL MERIDIAN,  
 COUNTY, INDIANA

MONUMENT DESCRIPTION AND REMARKS: Iron Pin Set NW corner W 1/2 NW 1/4  
Plat of Survey # 96-410 By: Charles J. Becher  
see: Green Map Cabinet Drawer #1 (Folder) or Survey Record page 287

RECOVERY TIE DRAWING



All Clock  
*Charles J. Becher*  
 Recorder Vermillion County Ind  
 \$600



STATE OF \_\_\_\_\_  
 COUNTY OF \_\_\_\_\_ SS

I, \_\_\_\_\_, HEREBY  
 CERTIFY THAT THIS DOCUMENT WAS PREPARED  
 UNDER MY DIRECTION IN ACCORDANCE WITH  
 IND. CODE 36-2-12-11-(D)-(3) AND THE ABOVE  
 DATA IS GIVEN UNDER MY HAND AND SEAL  
 THIS \_\_\_\_\_ DAY OF \_\_\_\_\_, 19\_\_\_\_ A.D.

INDIANA REGISTERED LAND SURVEYOR NO. \_\_\_\_\_

OR \_\_\_\_\_  
 UNITED STATES GOVERNMENT AGENCY

F-V2595

*Witness to William Baker*

TITLE

SPACE RESERVED FOR  
 RECORDING OFFICER

DATE FILED \_\_\_\_\_

