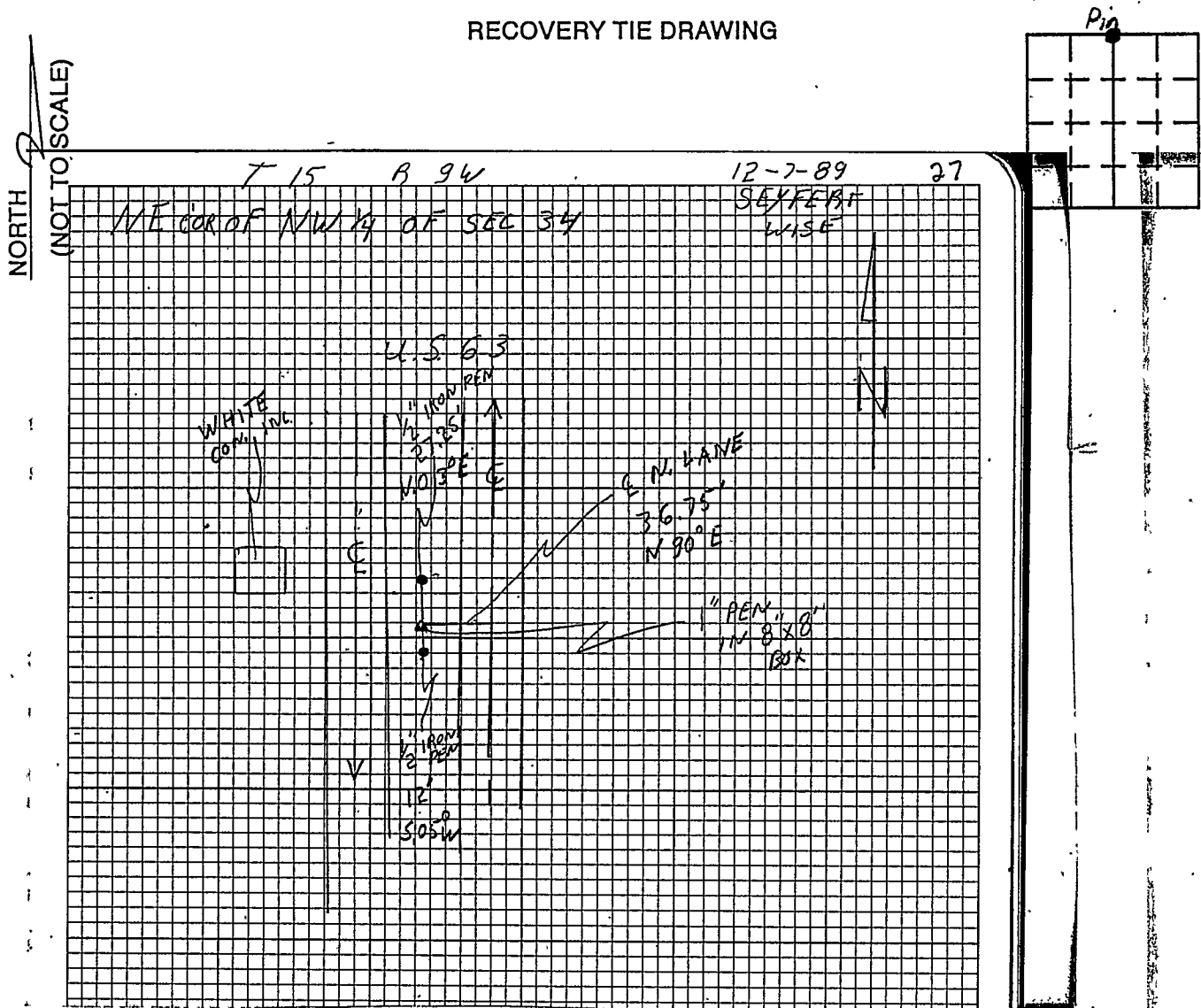


VERMILLION COUNTY, IND.  
**"MONUMENT RECORD"**  
 OF

LAND SURVEY MONUMENTS SITUATED IN SECTION 34, TOWNSHIP 15N,  
 RANGE 9W, OF THE 2 PRINCIPAL MERIDIAN,  
 COUNTY, INDIANA

MONUMENT DESCRIPTION AND REMARKS: 1" Pin in 8x8 Box Found NE corner NW 1/4  
From: 1989 Lietz Cross Section Book pg 27 By: John V. Major 12/7/89  
see: Gray File Cabinet 2<sup>nd</sup> Drawer

RECOVERY TIE DRAWING



STATE OF \_\_\_\_\_  
 COUNTY OF \_\_\_\_\_ SS

I, \_\_\_\_\_, HEREBY  
 CERTIFY THAT THIS DOCUMENT WAS PREPARED  
 UNDER MY DIRECTION IN ACCORDANCE WITH  
 IND. CODE 36-2-12-11-(D)-(3) AND THE ABOVE  
 DATA IS GIVEN UNDER MY HAND AND SEAL

THIS \_\_\_\_\_ DAY OF \_\_\_\_\_, 19\_\_\_\_ A.D.

INDIANA REGISTERED LAND SURVEYOR NO. \_\_\_\_\_

OR \_\_\_\_\_  
 UNITED STATES GOVERNMENT AGENCY

TITLE

SPACE RESERVED FOR  
 RECORDING OFFICER

DATE FILED \_\_\_\_\_

