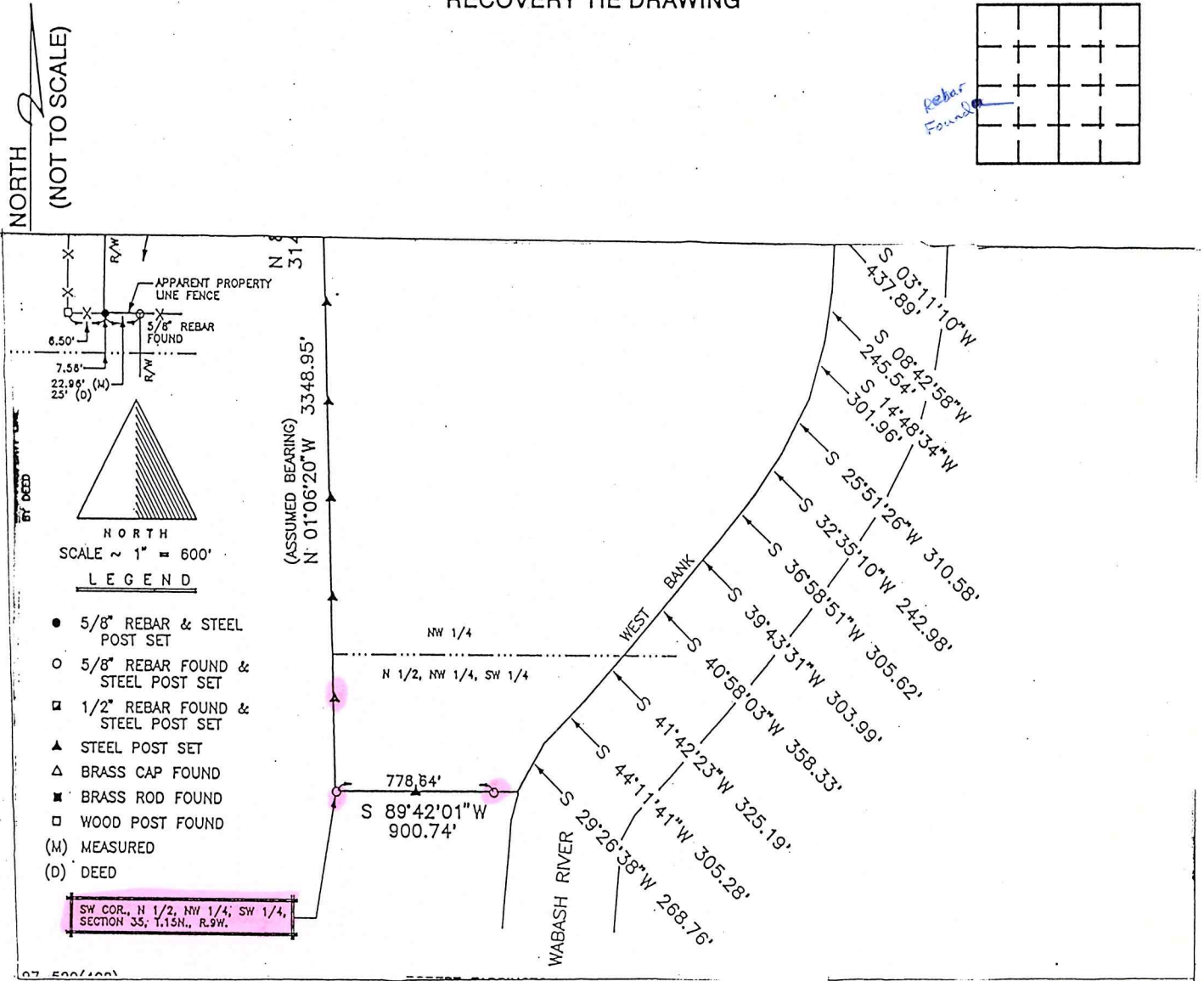


# VERMILLION COUNTY, IND. "MONUMENT RECORD" OF

LAND SURVEY MONUMENTS SITUATED IN SECTION 35, TOWNSHIP 15N,  
RANGE 9W, OF THE 2<sup>nd</sup> PRINCIPAL MERIDIAN, Vermillion  
COUNTY, INDIANA

MONUMENT DESCRIPTION AND REMARKS: C. David Helton for Robert Farrington  
Recorded Feb 11, 1998 Sur. 1, Page 388 SW Corner, N 1/2, NW 1/4  
SW 1/4 5/8" Rebar Found + Steel Post Set, Steel Post Set,  
5/8" Rebar Found + Steel Post Set

### RECOVERY TIE DRAWING



STATE OF \_\_\_\_\_  
COUNTY OF \_\_\_\_\_ SS

I, C. David Helton, HEREBY  
CERTIFY THAT THIS DOCUMENT WAS PREPARED  
UNDER MY DIRECTION IN ACCORDANCE WITH  
IND. CODE 36-2-12-11-(D)-(3) AND THE ABOVE  
DATA IS GIVEN UNDER MY HAND AND SEAL

THIS \_\_\_\_\_ DAY OF \_\_\_\_\_, 19\_\_\_\_ A.D.

INDIANA REGISTERED LAND SURVEYOR NO. \_\_\_\_\_  
OR 876007  
UNITED STATES GOVERNMENT AGENCY

TITLE \_\_\_\_\_

SPACE RESERVED FOR  
RECORDING OFFICER

DATE FILED \_\_\_\_\_

