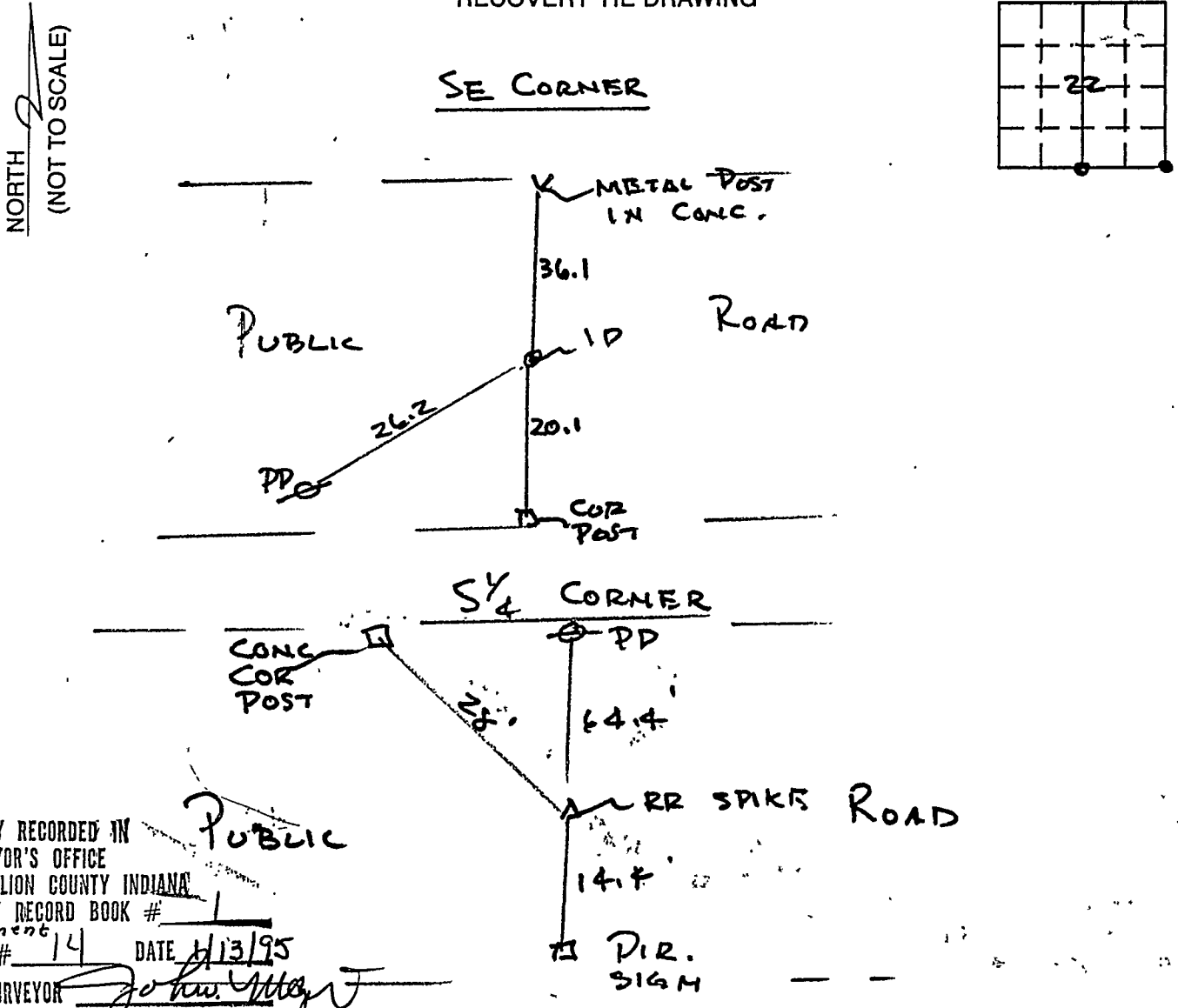


VERMILLION COUNTY, IND.
"MONUMENT RECORD"
 OF

LAND SURVEY MONUMENTS SITUATED IN SECTION 22, TOWNSHIP 16 N,
 RANGE 10 W, OF THE 2ND PRINCIPAL MERIDIAN, VERMILLION
 COUNTY, INDIANA

MONUMENT DESCRIPTION AND REMARKS: SET IRON PIN AT SE
CORNER AND FOUND RR SPIKE AT S 1/4 CORNER

RECOVERY TIE DRAWING



SURVEY RECORDED IN
 SURVEYOR'S OFFICE
 VERMILLION COUNTY INDIANA
 SURVEY RECORD BOOK # 1
 PAGE # 14 DATE 1/13/95
 CO. SURVEYOR John May

STATE OF IL
 COUNTY OF EDGAR SS
 I, CHARLES J. BECHER, HEREBY
 CERTIFY THAT THIS DOCUMENT WAS PREPARED
 UNDER MY DIRECTION IN ACCORDANCE WITH
 IND. CODE 36-2-12-11-(D)-(3) AND THE ABOVE
 DATA IS GIVEN UNDER MY HAND AND SEAL
 THIS 27 DAY OF DEC, 1994 A.D.
Charles J. Becher
 INDIANA REGISTERED LAND SURVEYOR NO. 0094
 OR _____
 UNITED STATES GOVERNMENT AGENCY

 TITLE

SPACE RESERVED FOR
 RECORDING OFFICER
John May
 DATE FILED 1/13/95

