

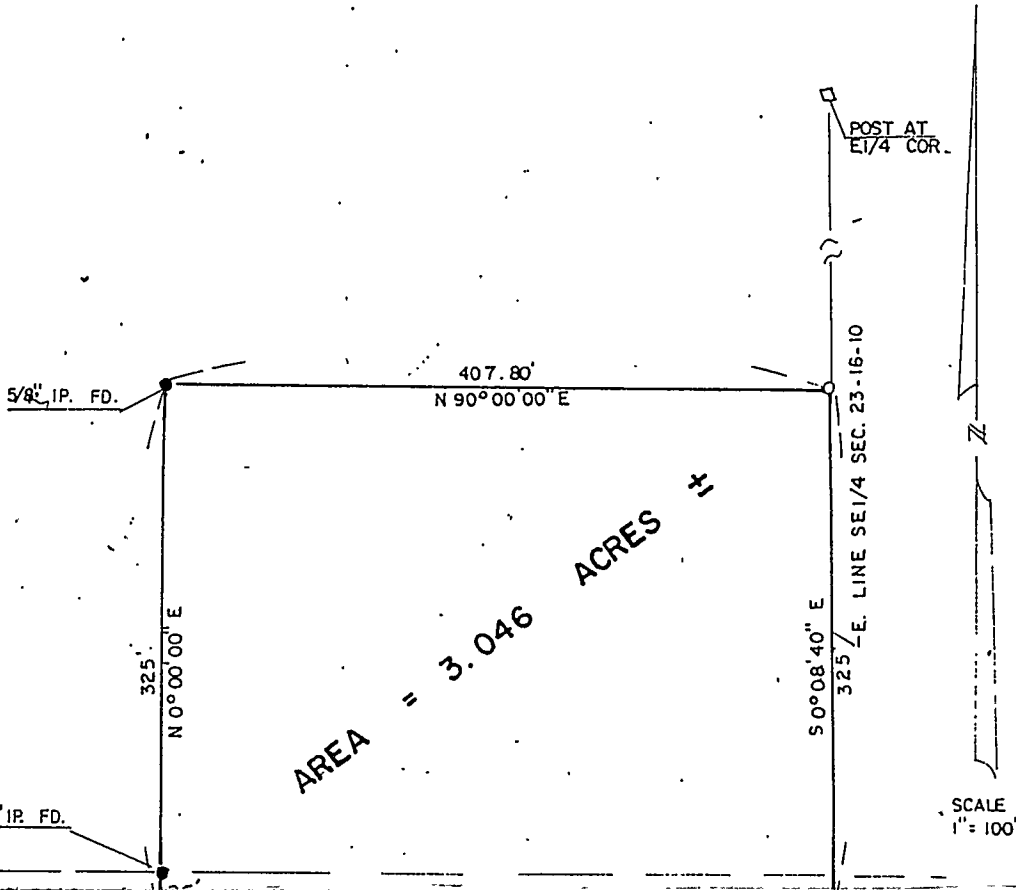
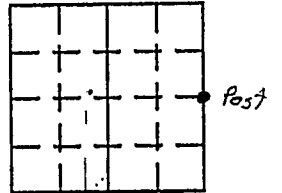
VERMILION COUNTY, IND.  
**"MONUMENT RECORD"**  
 OF

LAND SURVEY MONUMENTS SITUATED IN SECTION 23, TOWNSHIP 16N,  
 RANGE 10W, OF THE 2 PRINCIPAL MERIDIAN,  
 COUNTY, INDIANA

MONUMENT DESCRIPTION AND REMARKS: Post Found. E 1/4 corner  
By: Charles J. Becher 10/20/95  
see: Green Map Cabinet Drawer #1 or Deed Record 161 page 221

RECOVERY TIE DRAWING

NORTH  
 (NOT TO SCALE)



STATE OF \_\_\_\_\_  
 COUNTY OF \_\_\_\_\_ SS

I, \_\_\_\_\_, HEREBY  
 CERTIFY THAT THIS DOCUMENT WAS PREPARED  
 UNDER MY DIRECTION IN ACCORDANCE WITH  
 IND. CODE 36-2-12-11-(D)-(3) AND THE ABOVE  
 DATA IS GIVEN UNDER MY HAND AND SEAL  
 THIS \_\_\_\_\_ DAY OF \_\_\_\_\_, 19\_\_\_\_ A.D.

INDIANA REGISTERED LAND SURVEYOR NO. \_\_\_\_\_

OR \_\_\_\_\_  
 UNITED STATES GOVERNMENT AGENCY

TITLE

SPACE RESERVED FOR  
 RECORDING OFFICER

DATE FILED \_\_\_\_\_

