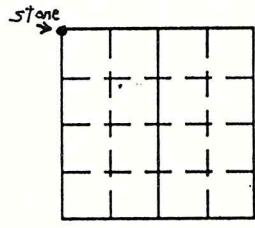


VERMILLION COUNTY, IND. "MONUMENT RECORD" OF

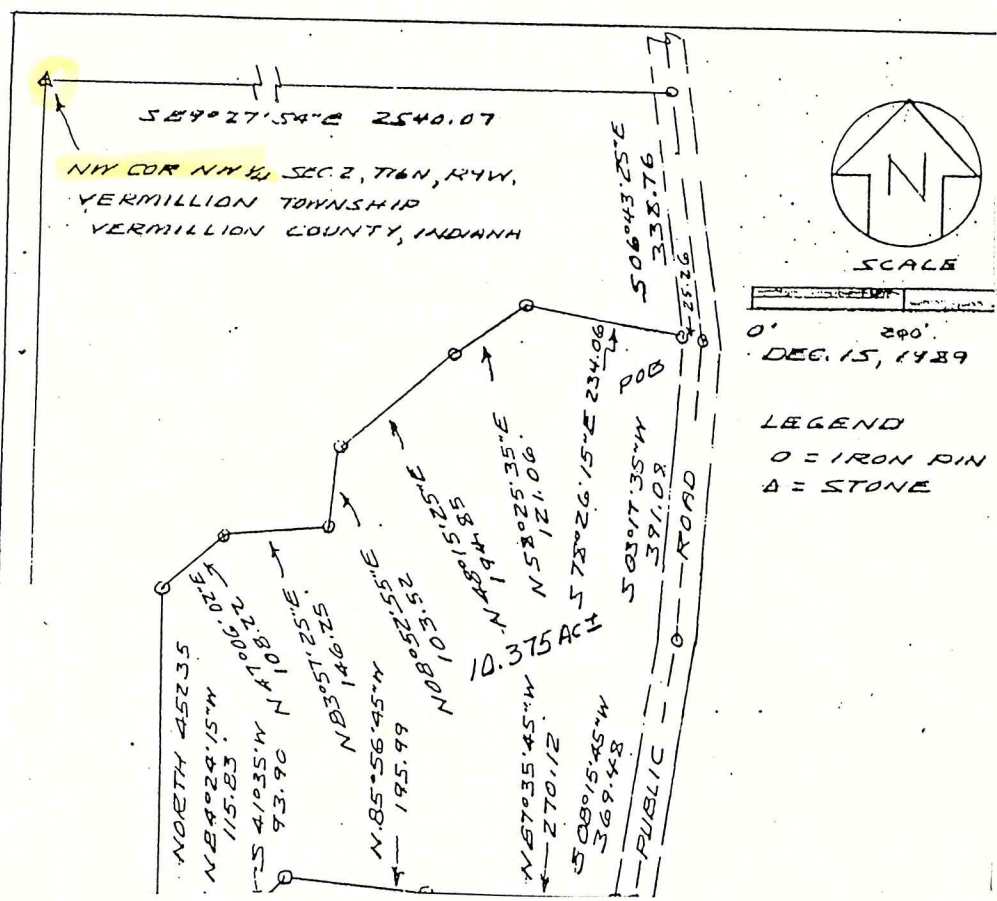
LAND SURVEY MONUMENTS SITUATED IN SECTION 2, TOWNSHIP 16N,
RANGE 9W, OF THE 2 PRINCIPAL MERIDIAN,
COUNTY, INDIANA

MONUMENT DESCRIPTION AND REMARKS: Stone Found NW corner NW 1/4
Done By: W. M. T. Crowley 12/15/89 Job No: 84A418
see: Field Survey Book #1 - Surveyor's Office
Recorder's Office - 03-13-98 - Deed Record 166, Page 341; Also D.R. 167, P. 265

08-03-98 - Miller to Voland
RECOVERY TIE DRAWING



NORTH 2
(NOT TO SCALE)



SCALE
0' 200'
DEC. 15, 1989

LEGEND
O = IRON PIN
A = STONE

STATE OF _____
COUNTY OF _____ SS

I, _____, HEREBY
CERTIFY THAT THIS DOCUMENT WAS PREPARED
UNDER MY DIRECTION IN ACCORDANCE WITH
IND. CODE 36-2-12-11-(D)-(3) AND THE ABOVE
DATA IS GIVEN UNDER MY HAND AND SEAL
THIS _____ DAY OF _____, 19 _____ A.D.

INDIANA REGISTERED LAND SURVEYOR NO. 6966
OR _____
UNITED STATES GOVERNMENT AGENCY

TITLE _____

SPACE RESERVED FOR
RECORDING OFFICER

DATE FILED _____

