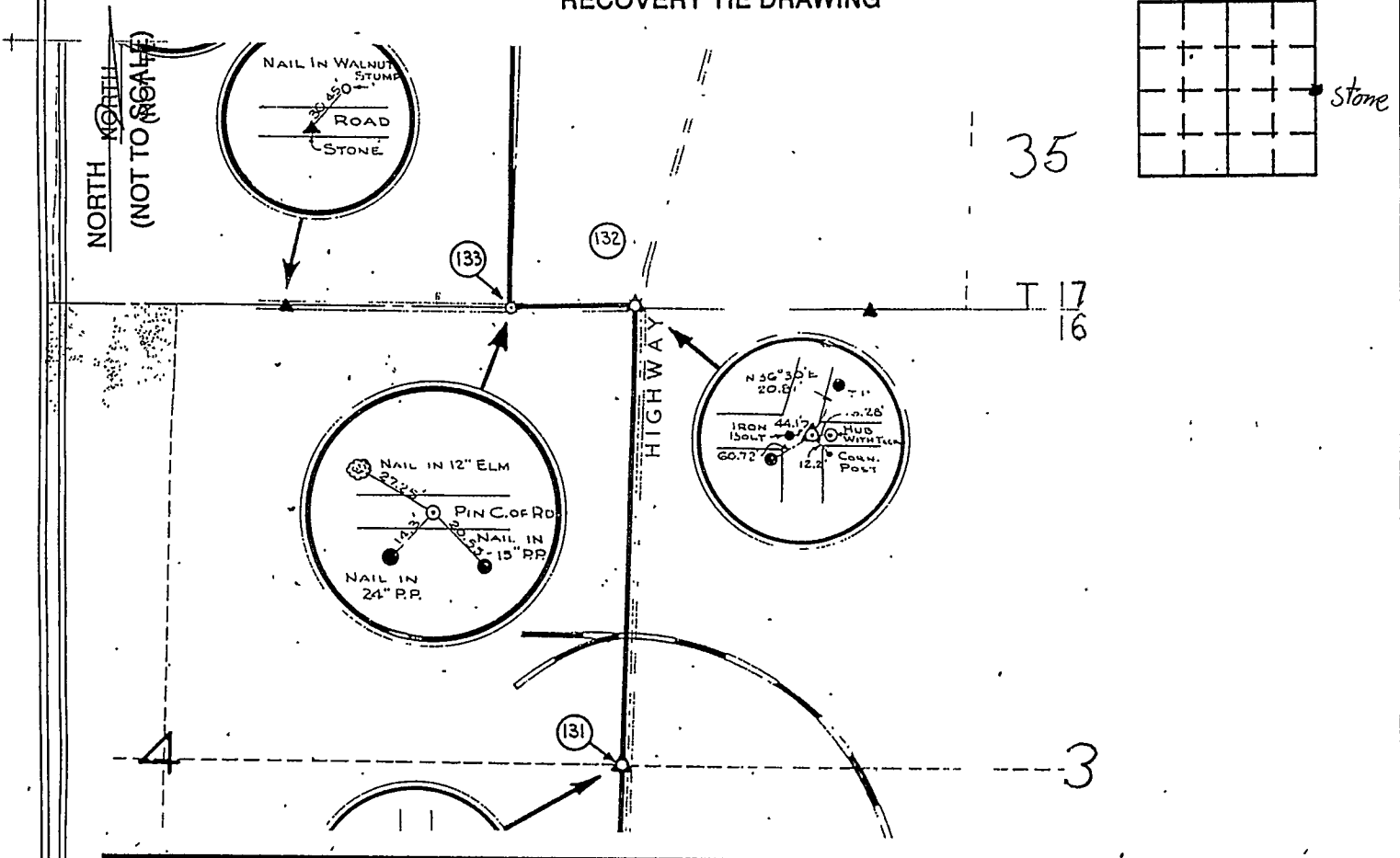


# VERMILLION COUNTY, IND. "MONUMENT RECORD" OF

LAND SURVEY MONUMENTS SITUATED IN SECTION 4, TOWNSHIP 16N,  
RANGE 9W, OF THE 2 PRINCIPAL MERIDIAN,  
COUNTY, INDIANA

MONUMENT DESCRIPTION AND REMARKS: P.I. on Stone Found SE corner NE 1/4  
Map of Boundry Survey Drawn By: W.E. Nash 12/22/42  
Project No: 9073 see: Green Map Cabinet Drawer #1

RECOVERY TIE DRAWING



STATE OF \_\_\_\_\_  
COUNTY OF \_\_\_\_\_ SS

SPACE RESERVED FOR  
RECORDING OFFICER

I, \_\_\_\_\_, HEREBY  
CERTIFY THAT THIS DOCUMENT WAS PREPARED

DATE FILED \_\_\_\_\_

STATE OF \_\_\_\_\_  
COUNTY OF \_\_\_\_\_ SS

SPACE RESERVED FOR  
RECORDING OFFICER

I, \_\_\_\_\_, HEREBY  
CERTIFY THAT THIS DOCUMENT WAS PREPARED  
UNDER MY DIRECTION IN ACCORDANCE WITH  
IND. CODE 36-2-12-11-(D)-(3) AND THE ABOVE  
DATA IS GIVEN UNDER MY HAND AND SEAL

DATE FILED \_\_\_\_\_

THIS \_\_\_\_\_ DAY OF \_\_\_\_\_, 19\_\_\_\_ A.D.

INDIANA REGISTERED LAND SURVEYOR NO. \_\_\_\_\_

OR \_\_\_\_\_  
UNITED STATES GOVERNMENT AGENCY

TITLE \_\_\_\_\_

