

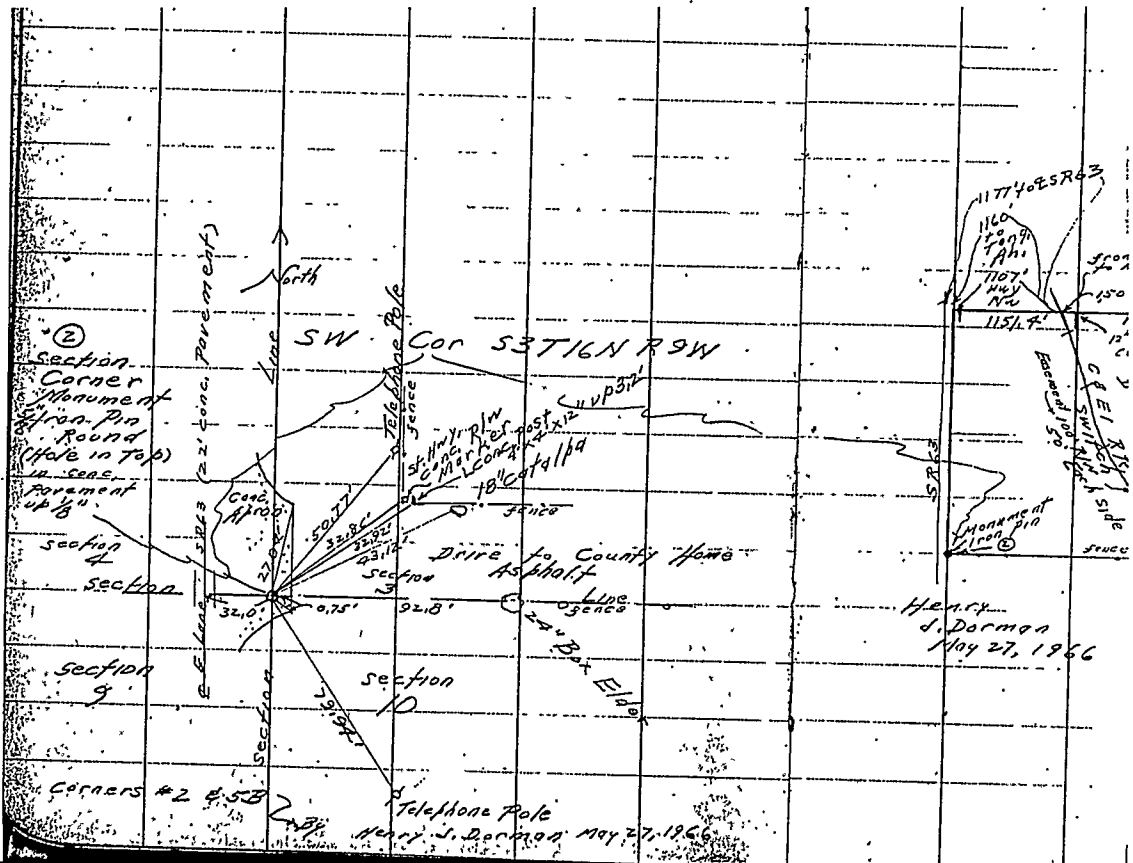
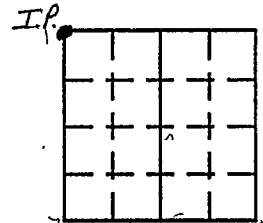
# VERMILLION COUNTY, IND. "MONUMENT RECORD" OF

LAND SURVEY MONUMENTS SITUATED IN SECTION 10, TOWNSHIP 16N,  
RANGE 9W, OF THE 2 PRINCIPAL MERIDIAN,  
COUNTY, INDIANA

MONUMENT DESCRIPTION AND REMARKS: 5/8" Iron Pin Found NW corner  
5/27/66 From: Brown Corner Stone Book By: Henry J. Dorman  
see: Gray File Cabinet Drawer #2

### RECOVERY TIE DRAWING

NORTH 2  
(NOT TO SCALE)



SPACE RESERVED FOR

STATE OF \_\_\_\_\_  
COUNTY OF \_\_\_\_\_ SS

SPACE RESERVED FOR  
RECORDING OFFICER

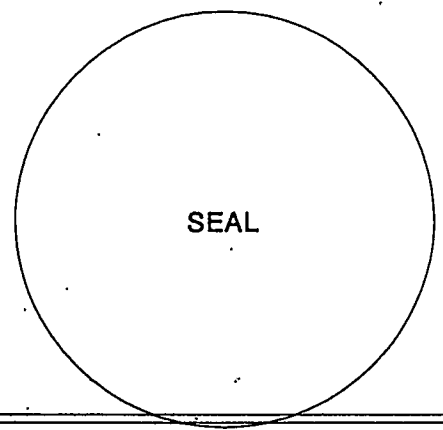
DATE FILED \_\_\_\_\_

I, \_\_\_\_\_, HEREBY  
CERTIFY THAT THIS DOCUMENT WAS PREPARED  
UNDER MY DIRECTION IN ACCORDANCE WITH  
IND. CODE 36-2-12-11-(D)-(3) AND THE ABOVE  
DATA IS GIVEN UNDER MY HAND AND SEAL

THIS \_\_\_\_\_ DAY OF \_\_\_\_\_, 19 \_\_\_\_\_ A.D.

INDIANA REGISTERED LAND SURVEYOR NO. \_\_\_\_\_

OR \_\_\_\_\_  
UNITED STATES GOVERNMENT AGENCY



TITLE \_\_\_\_\_