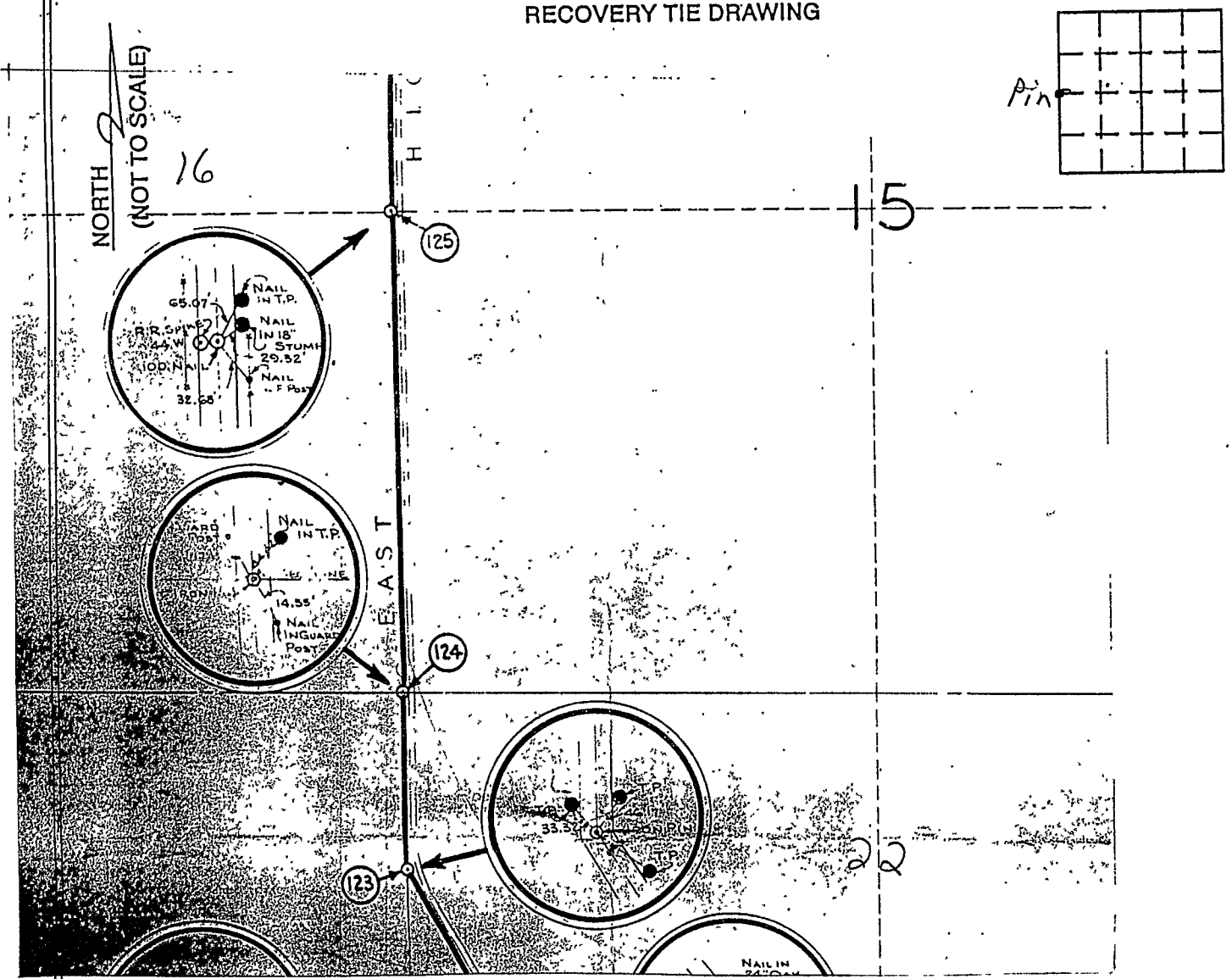


VERMILLION COUNTY, IND.  
**"MONUMENT RECORD"**  
 OF

LAND SURVEY MONUMENTS SITUATED IN SECTION 15, TOWNSHIP 16N,  
 RANGE 9W, OF THE 2 PRINCIPAL MERIDIAN,  
 COUNTY, INDIANA

MONUMENT DESCRIPTION AND REMARKS: Pl. Pin on Traverse Line NW corner SW 1/4  
Map of Boundary Survey Drawn By: W.E. Nash 12/22/42  
Project No: 9073 see: Green Map Cabinet Drawer #1

RECOVERY TIE DRAWING



STATE OF \_\_\_\_\_  
 COUNTY OF \_\_\_\_\_ SS  
 I, \_\_\_\_\_, HEREBY  
 CERTIFY THAT THIS DOCUMENT WAS PREPARED  
 UNDER MY DIRECTION IN ACCORDANCE WITH  
 IND. CODE 36-2-12-11-(D)-(3) AND THE ABOVE  
 DATA IS GIVEN UNDER MY HAND AND SEAL  
 THIS \_\_\_\_\_ DAY OF \_\_\_\_\_, 19\_\_\_\_ A.D.  
 \_\_\_\_\_  
 INDIANA REGISTERED LAND SURVEYOR NO. \_\_\_\_\_  
 OR \_\_\_\_\_  
 UNITED STATES GOVERNMENT AGENCY  
 \_\_\_\_\_  
 TITLE

SPACE RESERVED FOR  
 RECORDING OFFICER

DATE FILED \_\_\_\_\_

