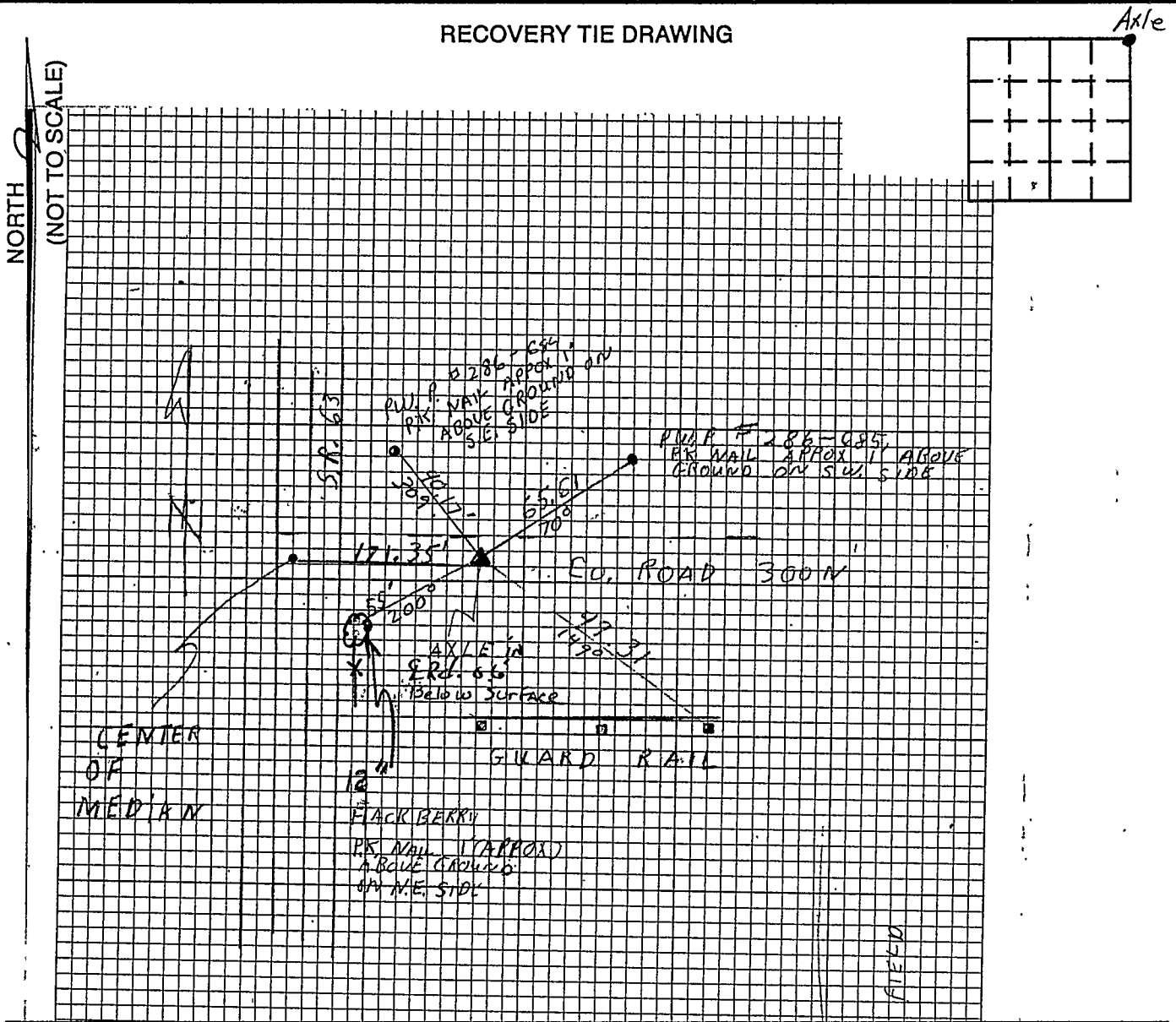


# VERMILLION COUNTY, IND. "MONUMENT RECORD" OF

LAND SURVEY MONUMENTS SITUATED IN SECTION 16, TOWNSHIP 16N,  
RANGE 9W, OF THE 2 PRINCIPAL MERIDIAN,  
COUNTY, INDIANA

MONUMENT DESCRIPTION AND REMARKS: Axle Found NE corner  
From: Yellow Hard Back Field Book 1989 Lietz By: John V. Major  
Back of pg. 6 see: Gray File Cabinet Drawer #2

RECOVERY TIE DRAWING



STATE OF \_\_\_\_\_  
COUNTY OF \_\_\_\_\_ SS:  
I, \_\_\_\_\_, HEREBY  
CERTIFY THAT THIS DOCUMENT WAS PREPARED  
UNDER MY DIRECTION IN ACCORDANCE WITH  
IND. CODE 36-2-12-11-(D)-(3) AND THE ABOVE  
DATA IS GIVEN UNDER MY HAND AND SEAL  
THIS \_\_\_\_\_ DAY OF \_\_\_\_\_, 19\_\_\_\_ A.D.  
\_\_\_\_\_  
INDIANA REGISTERED LAND SURVEYOR NO. \_\_\_\_\_  
OR \_\_\_\_\_  
UNITED STATES GOVERNMENT AGENCY  
\_\_\_\_\_  
TITLE \_\_\_\_\_

SPACE RESERVED FOR  
RECORDING OFFICER

DATE FILED \_\_\_\_\_

