

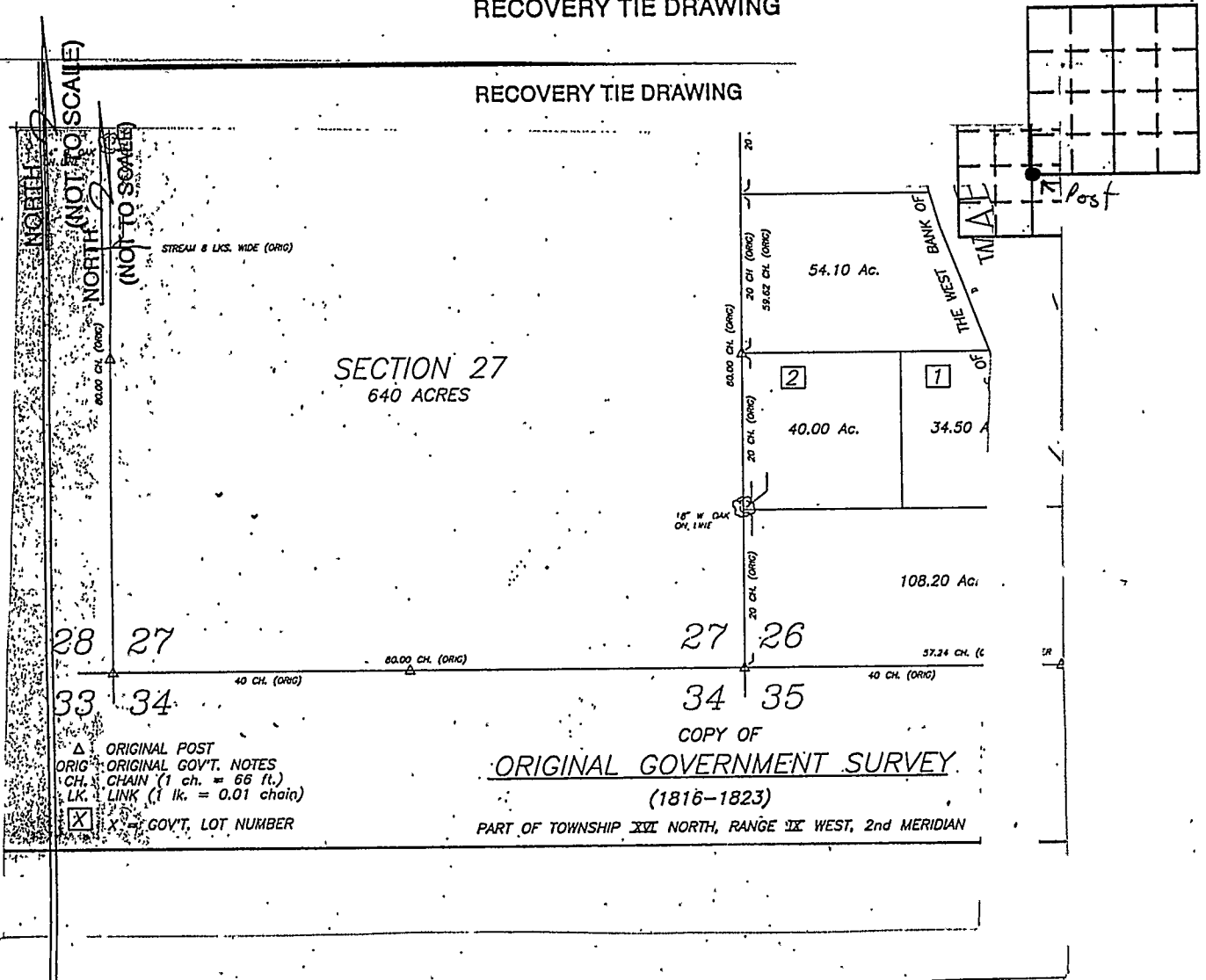
# VERMILLION COUNTY, IND. "MONUMENT RECORD" OF

LAND SURVEY MONUMENTS SITUATED IN SECTION 26, TOWNSHIP 16N,  
RANGE 9W, OF THE 2 PRINCIPAL MERIDIAN,  
COUNTY, INDIANA

MONUMENT DESCRIPTION AND REMARKS: Original Post Found SW corner  
Original Government Survey By: David L. South 12/29/95  
see: Plat Book 2 pg 8-15

### RECOVERY TIE DRAWING

### RECOVERY TIE DRAWING



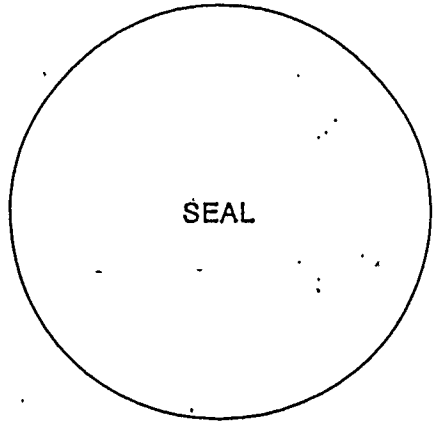
STATE OF \_\_\_\_\_  
COUNTY OF \_\_\_\_\_ SS

SPACE RESERVED FOR  
RECORDING OFFICER

I, \_\_\_\_\_, HEREBY  
CERTIFY THAT THIS DOCUMENT WAS PREPARED  
UNDER MY DIRECTION IN ACCORDANCE WITH  
IND. CODE 36-2-12-11-(D)-(3) AND THE ABOVE  
DATA IS GIVEN UNDER MY HAND AND SEAL  
THIS \_\_\_\_\_ DAY OF \_\_\_\_\_, 19\_\_\_\_ A.D.

DATE FILED \_\_\_\_\_

INDIANA REGISTERED LAND SURVEYOR NO. \_\_\_\_\_



OR \_\_\_\_\_  
UNITED STATES GOVERNMENT AGENCY

TITLE