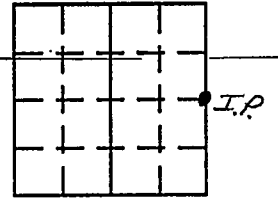
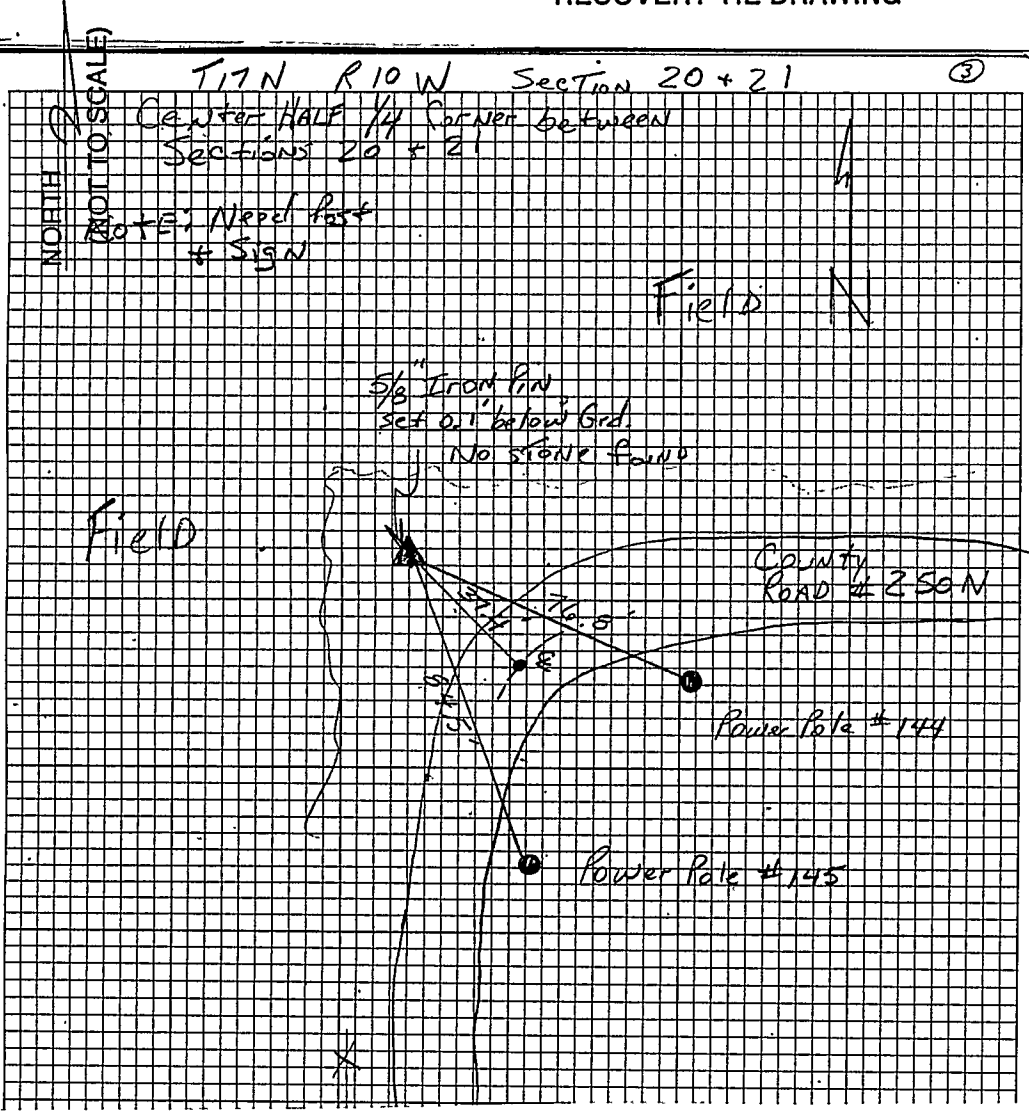


# VERMILLION COUNTY, IND. "MONUMENT RECORD" OF

LAND SURVEY MONUMENTS SITUATED IN SECTION 20, TOWNSHIP 17N,  
RANGE 10W, OF THE 2 PRINCIPAL MERIDIAN,  
COUNTY, INDIANA

MONUMENT DESCRIPTION AND REMARKS: 5/8" Iron Pin Set Center Half 1/4 corner  
From: Yellow Hard Back Field Book, By John V. Major pg 3  
see: Gray File Cabinet Drawer #2 1989 Lietz

### RECOVERY TIE DRAWING



STATE OF \_\_\_\_\_  
COUNTY OF \_\_\_\_\_ SS: \_\_\_\_\_  
I, \_\_\_\_\_, HEREBY  
CERTIFY THAT THIS DOCUMENT WAS PREPARED  
UNDER MY DIRECTION IN ACCORDANCE WITH  
IND. CODE 36-2-12-11-(D)-(3) AND THE ABOVE  
DATA IS GIVEN UNDER MY HAND AND SEAL  
THIS \_\_\_\_\_ DAY OF \_\_\_\_\_, 19 \_\_\_\_\_ A.D.  
INDIANA REGISTERED LAND SURVEYOR NO. \_\_\_\_\_  
OR \_\_\_\_\_  
UNITED STATES GOVERNMENT AGENCY  
TITLE \_\_\_\_\_

SPACE RESERVED FOR  
RECORDING OFFICER  
DATE FILED \_\_\_\_\_

