

VERMILLION COUNTY, IND. "MONUMENT RECORD" OF

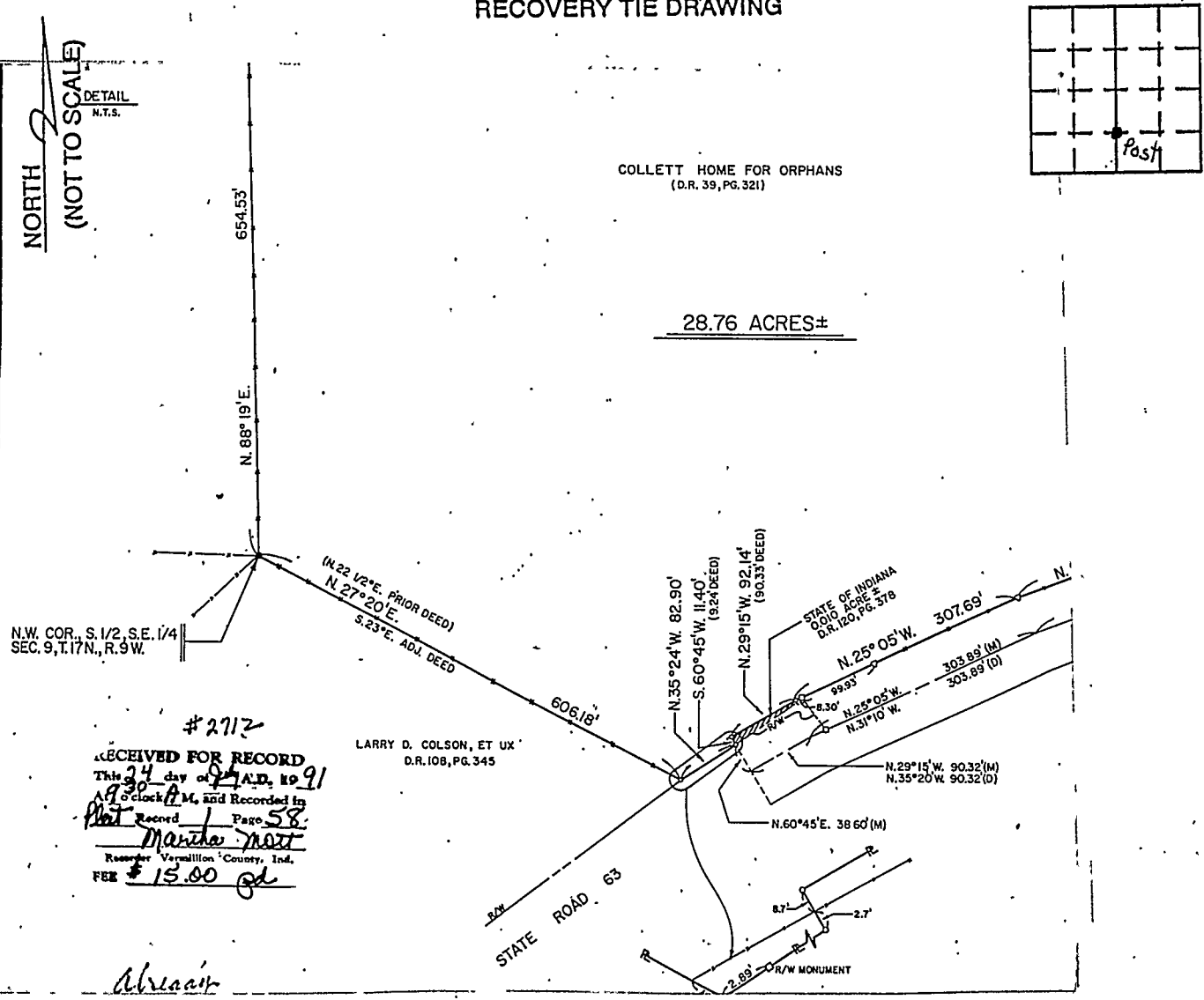
LAND SURVEY MONUMENTS SITUATED IN SECTION 9, TOWNSHIP 17N

RANGE 9W, OF THE 2 PRINCIPAL MERIDIAN,

COUNTY, INDIANA

MONUMENT DESCRIPTION AND REMARKS: Wood Corner Post Found NW corner
5 1/2 SE 1/4 Collett Home By: C. David Helton 6/20/91 #2712
see: Plat Book 1 pg 58

RECOVERY TIE DRAWING



STATE OF _____
COUNTY OF _____ SS

I, _____, HEREBY
CERTIFY THAT THIS DOCUMENT WAS PREPARED
UNDER MY DIRECTION IN ACCORDANCE WITH
IND. CODE 36-2-12-11-(D)-(3) AND THE ABOVE
DATA IS GIVEN UNDER MY HAND AND SEAL
THIS _____ DAY OF _____, 19____, A.D.

SPACE RESERVED FOR
RECORDING OFFICER

DATE FILED _____

