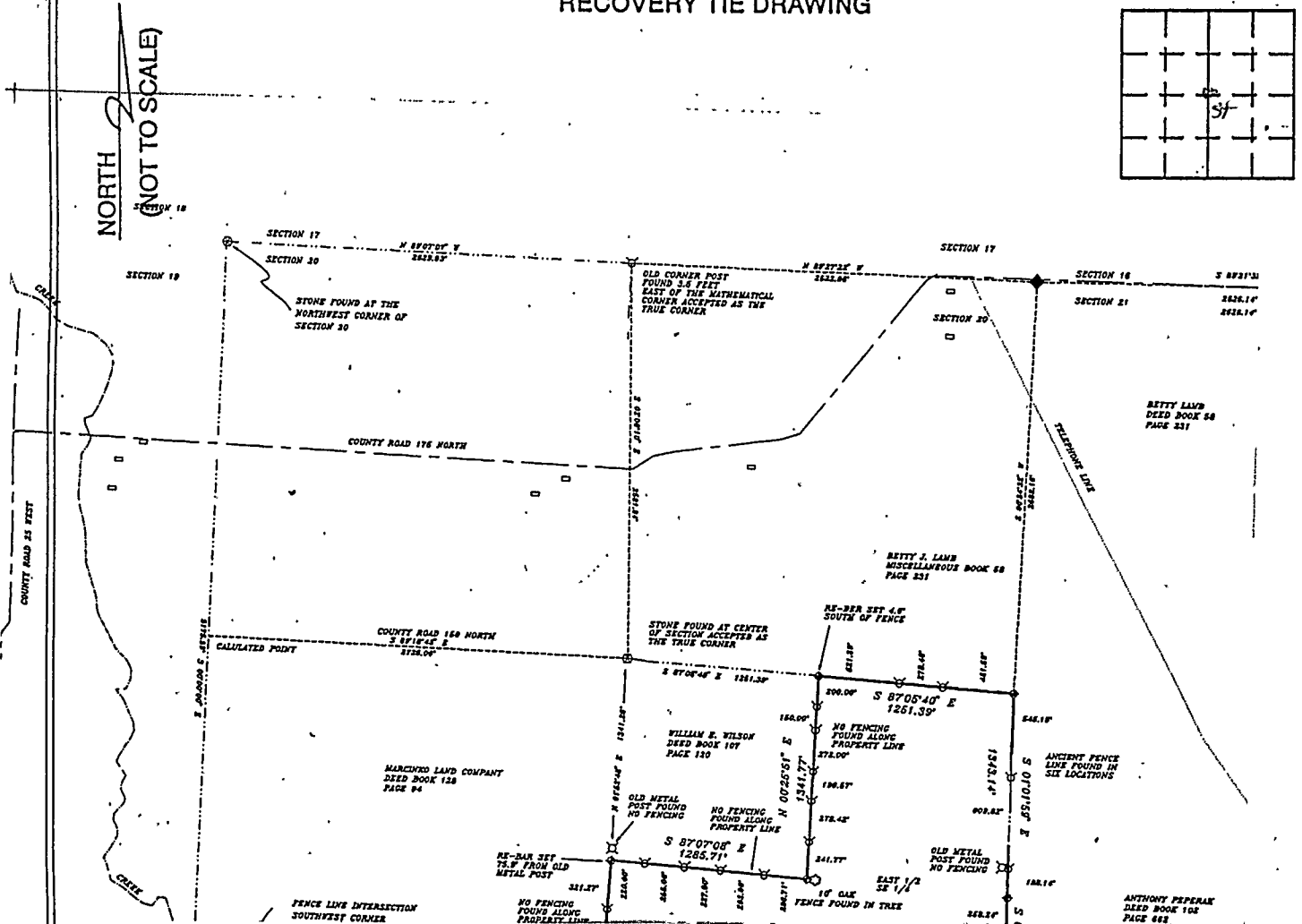


# VERMILLION COUNTY, IND. "MONUMENT RECORD" OF

LAND SURVEY MONUMENTS SITUATED IN SECTION 20, TOWNSHIP 17N,  
RANGE 9W, OF THE 2 PRINCIPAL MERIDIAN,  
COUNTY, INDIANA

MONUMENT DESCRIPTION AND REMARKS: Stone Found Center of section 20  
By: James C. Tibbett 2/23/96.  
See: Green Map Cabinet Drawer #1 or Survey Record/pg 305

## RECOVERY TIE DRAWING



STATE OF \_\_\_\_\_  
COUNTY OF \_\_\_\_\_ SS

I, \_\_\_\_\_, HEREBY  
CERTIFY THAT THIS DOCUMENT WAS PREPARED  
UNDER MY DIRECTION IN ACCORDANCE WITH  
IND. CODE 36-2-12-11-(D)-(3) AND THE ABOVE  
DATA IS GIVEN UNDER MY HAND AND SEAL  
THIS \_\_\_\_\_ DAY OF \_\_\_\_\_, 19\_\_\_\_ A.D.

INDIANA REGISTERED LAND SURVEYOR NO. \_\_\_\_\_

OR \_\_\_\_\_  
UNITED STATES GOVERNMENT AGENCY

\_\_\_\_\_ TITLE

SPACE RESERVED FOR  
RECORDING OFFICER

DATE FILED \_\_\_\_\_

