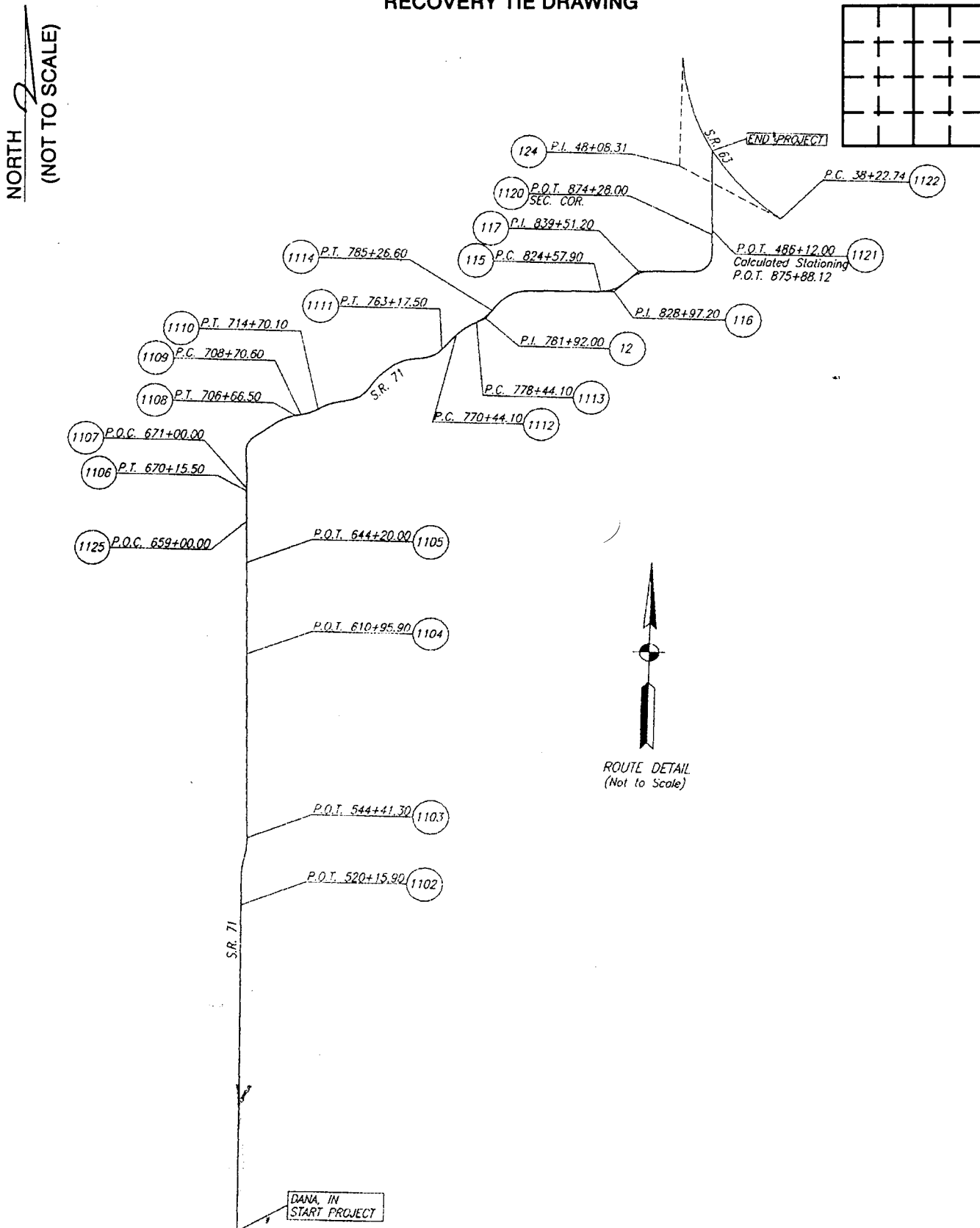


VERMILLION COUNTY, IND. "MONUMENT RECORD" OF

LAND SURVEY MONUMENTS SITUATED IN SECTION _____, TOWNSHIP 16 N,
 RANGE 10 W, OF THE _____ PRINCIPAL MERIDIAN, _____,
 COUNTY, INDIANA

MONUMENT DESCRIPTION AND REMARKS: _____

RECOVERY TIE DRAWING



SURVEYOR'S REPORT

*Contract No. RS-25954-A
S.R. 71 Vermillion County*

Project Location: *S.R. 71 Vermillion County, from Dana, IN to intersection of S.R. 63*

Description of Work: *Reset and referenced centerline monuments from INDOT
Project No. 686, No. STF-305 (22) & No. S-122(3).*

Coordinate System: *Indiana West State Plane Coordinates*

Units: *International Feet*

Certification:

*This report, to best of my knowledge and belief, is executed according to the provisions of
865, I.A.C. 1-12-20 and to the Indiana Department of Transportations specifications in
Contract No. RS-25954-A.*


Mark A. Schepers, PLS 8-28-02
Date



Index of Report:

- | | |
|---|-------------|
| - Cover Page | Pages: 1 |
| - Surveyor's Report & Coordinates Chart | Pages: 2-3 |
| - Inverse Sheet (Error Summary) | Pages: 4 |
| - Reference Ties | Pages: 5-8 |
| - NGS Monument Information | Pages: 9-12 |
| - Route Detail | Pages: 13 |

Prepared By:



USI Consultants, Inc.,

Prepared For:

The Vermillion County Surveyor
Indiana Department of Transportation
(Crawfordsville District)
Milestone Contractors, L.P.

VERMILLION COUNTY, IND. "MONUMENT RECORD" OF

LAND SURVEY MONUMENTS SITUATED IN SECTION _____, TOWNSHIP 16 N

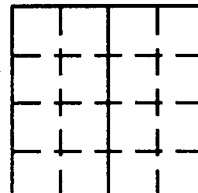
RANGE 10 W, OF THE _____ PRINCIPAL MERIDIAN,

COUNTY, INDIANA

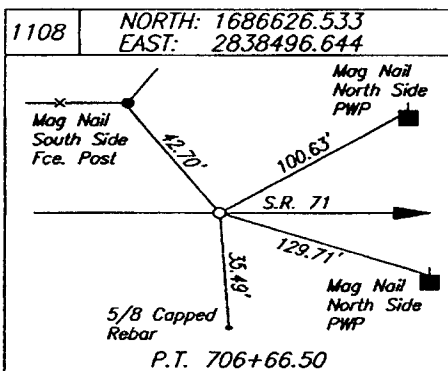
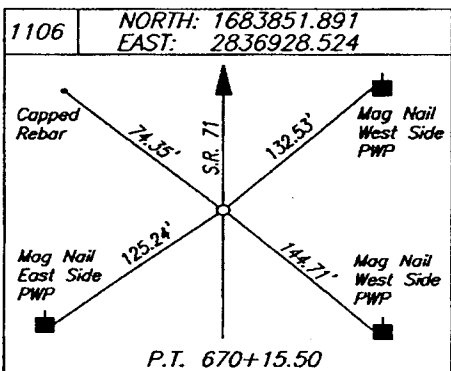
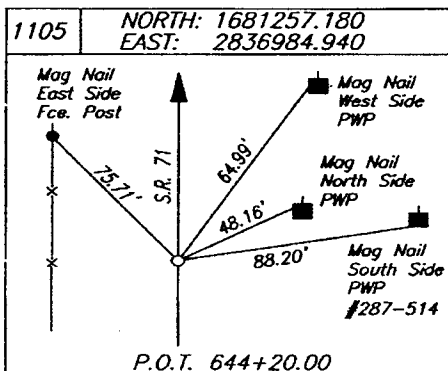
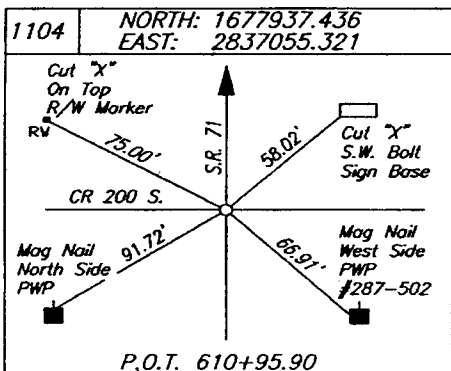
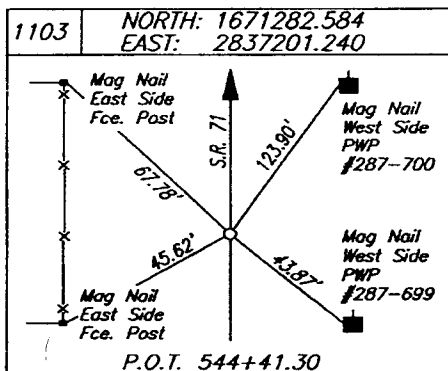
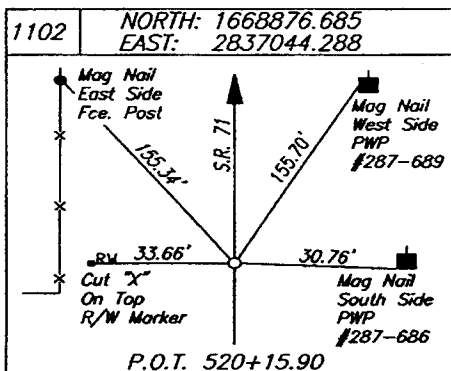
MONUMENT DESCRIPTION AND REMARKS: _____

REFERENCE TIES

The coordinates on the references are the final coordinates on the reset monuments



NORTH 2
(NOT TO SCALE)



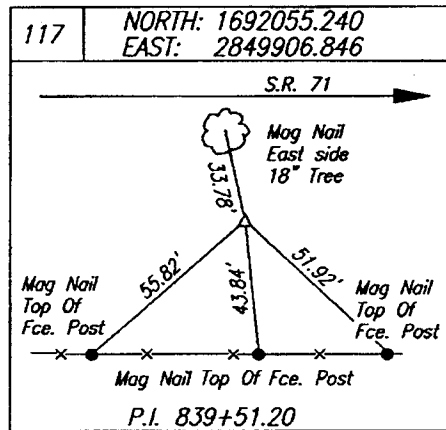
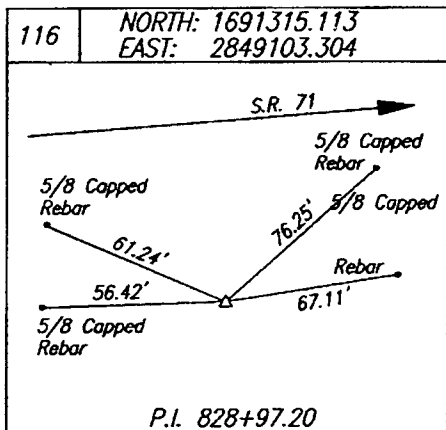
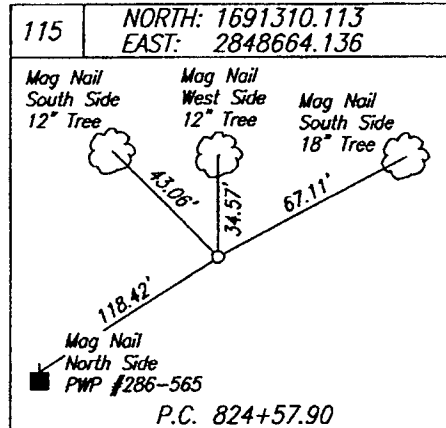
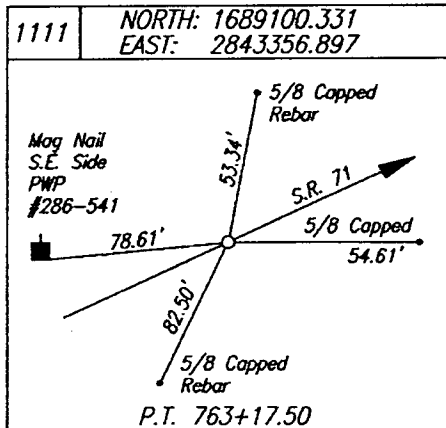
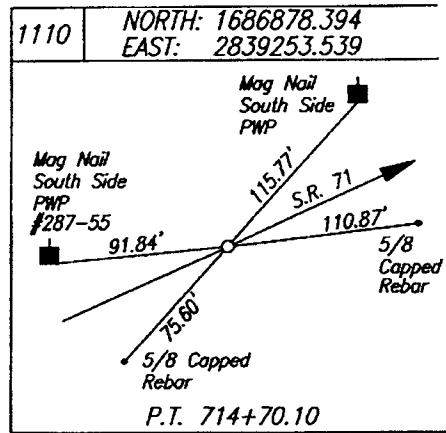
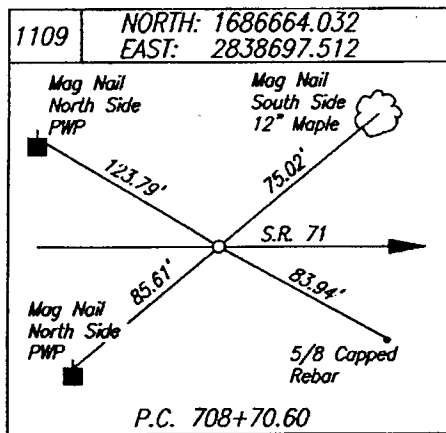
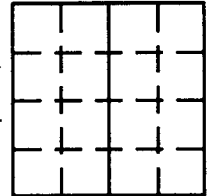
VERMILLION COUNTY, IND. "MONUMENT RECORD" OF

LAND SURVEY MONUMENTS SITUATED IN SECTION _____, TOWNSHIP 16 N,
RANGE 10 W, OF THE _____ PRINCIPAL MERIDIAN, _____,
COUNTY, INDIANA

MONUMENT DESCRIPTION AND REMARKS: _____

RECOVERY TIE DRAWING

NORTH
2
(NOT TO SCALE)



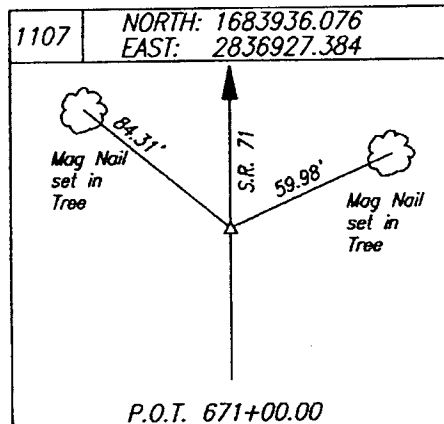
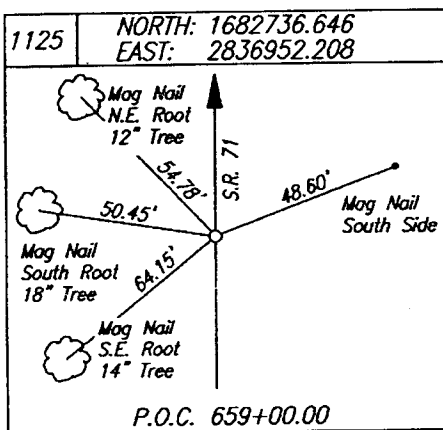
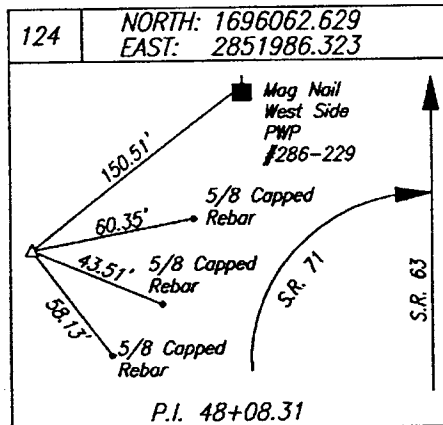
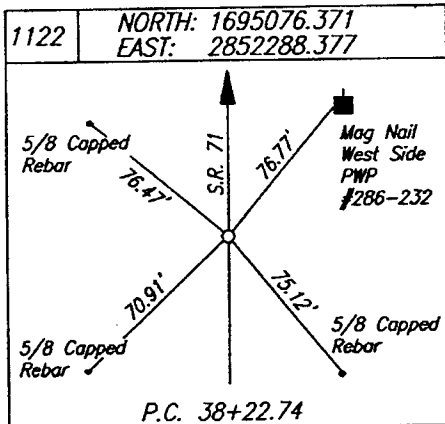
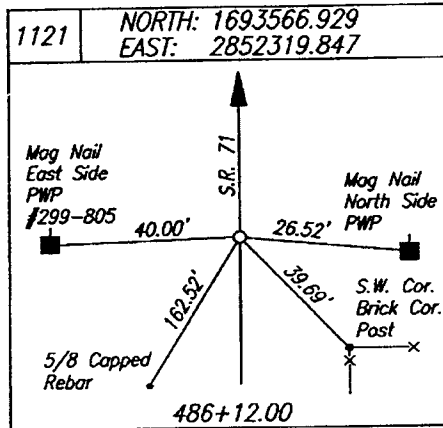
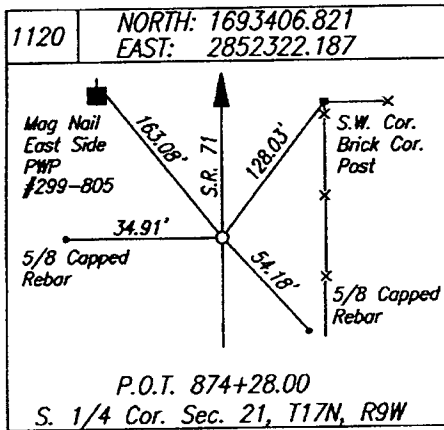
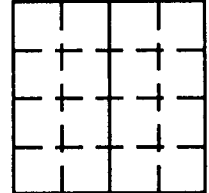
VERMILLION COUNTY, IND. "MONUMENT RECORD" OF

LAND SURVEY MONUMENTS SITUATED IN SECTION _____, TOWNSHIP 16 N,
RANGE 10 W, OF THE _____ PRINCIPAL MERIDIAN, _____,
COUNTY, INDIANA

MONUMENT DESCRIPTION AND REMARKS: _____

RECOVERY TIE DRAWING

NORTH
(NOT TO SCALE)



VERMILLION COUNTY, IND. "MONUMENT RECORD" OF

LAND SURVEY MONUMENTS SITUATED IN SECTION _____, TOWNSHIP 16 N,
RANGE 10 W, OF THE _____ PRINCIPAL MERIDIAN, _____
COUNTY, INDIANA

MONUMENT DESCRIPTION AND REMARKS: _____

RECOVERY TIE DRAWING

NORTH
2
(NOT TO SCALE)

