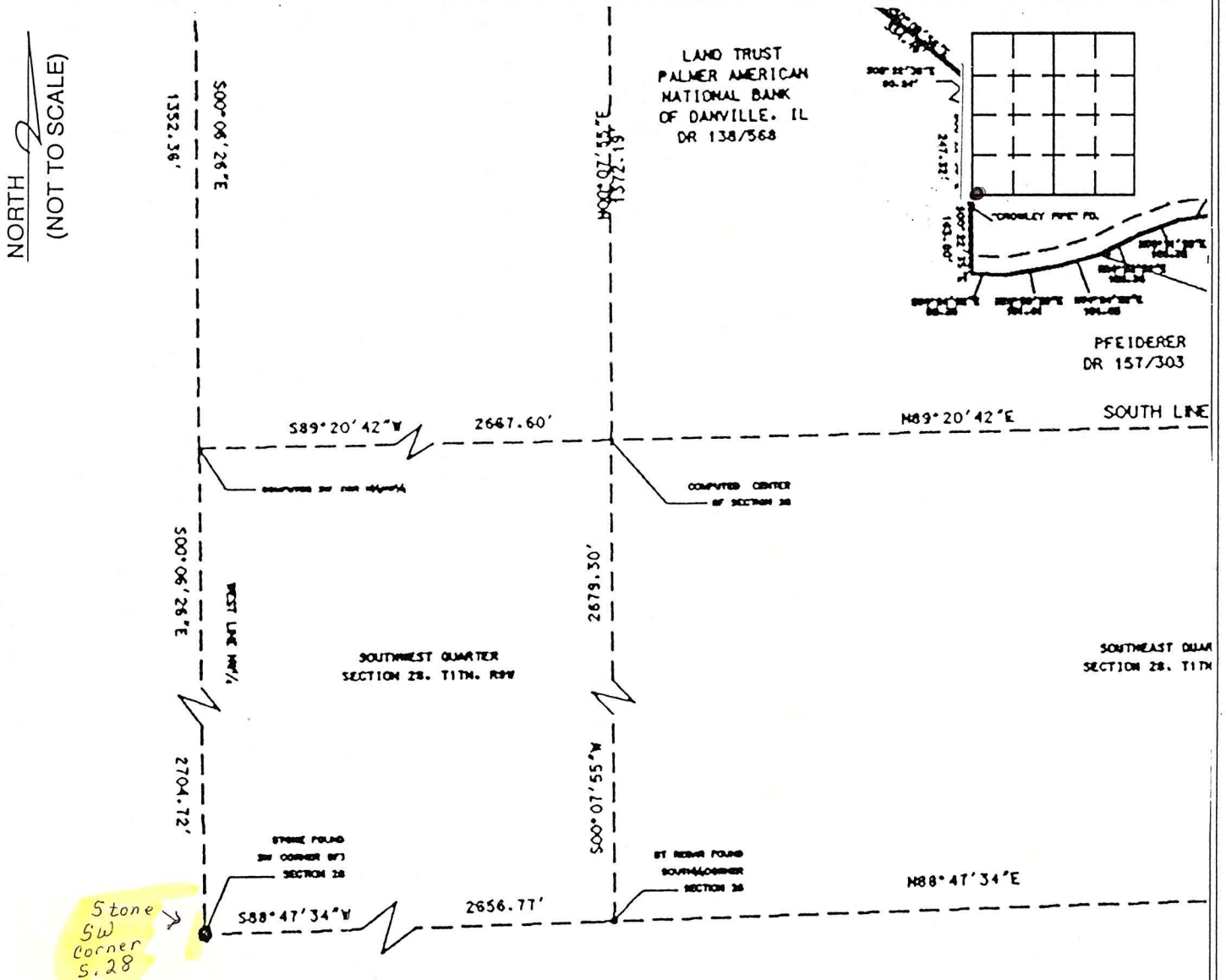


# VERMILLION COUNTY, IND. "MONUMENT RECORD" OF

LAND SURVEY MONUMENTS SITUATED IN SECTION 28, TOWNSHIP 17 N,  
RANGE 9 W, OF THE 2<sup>nd</sup> PRINCIPAL MERIDIAN,  
COUNTY, INDIANA

MONUMENT DESCRIPTION AND REMARKS: Bledsoe, Tapp + Riggert, Inc for Southwest Acceptance Corp. Stone found SW Corner. 2-9-97  
Recorder's Office - Survey Book #1, Page 450.  
Surveyor's Office - Field Survey Book #4



STATE OF \_\_\_\_\_  
COUNTY OF \_\_\_\_\_ SS

I, Ben E. Bledsoe, HEREBY  
CERTIFY THAT THIS DOCUMENT WAS PREPARED  
UNDER MY DIRECTION IN ACCORDANCE WITH  
IND. CODE 36-2-12-11-(D)-(3) AND THE ABOVE  
DATA IS GIVEN UNDER MY HAND AND SEAL  
THIS 9<sup>th</sup> DAY OF February, 19 97 A.D.

INDIANA REGISTERED LAND SURVEYOR NO. 50559

OR \_\_\_\_\_  
UNITED STATES GOVERNMENT AGENCY

TITLE

SPACE RESERVED FOR  
RECORDING OFFICER

DATE FILED \_\_\_\_\_

