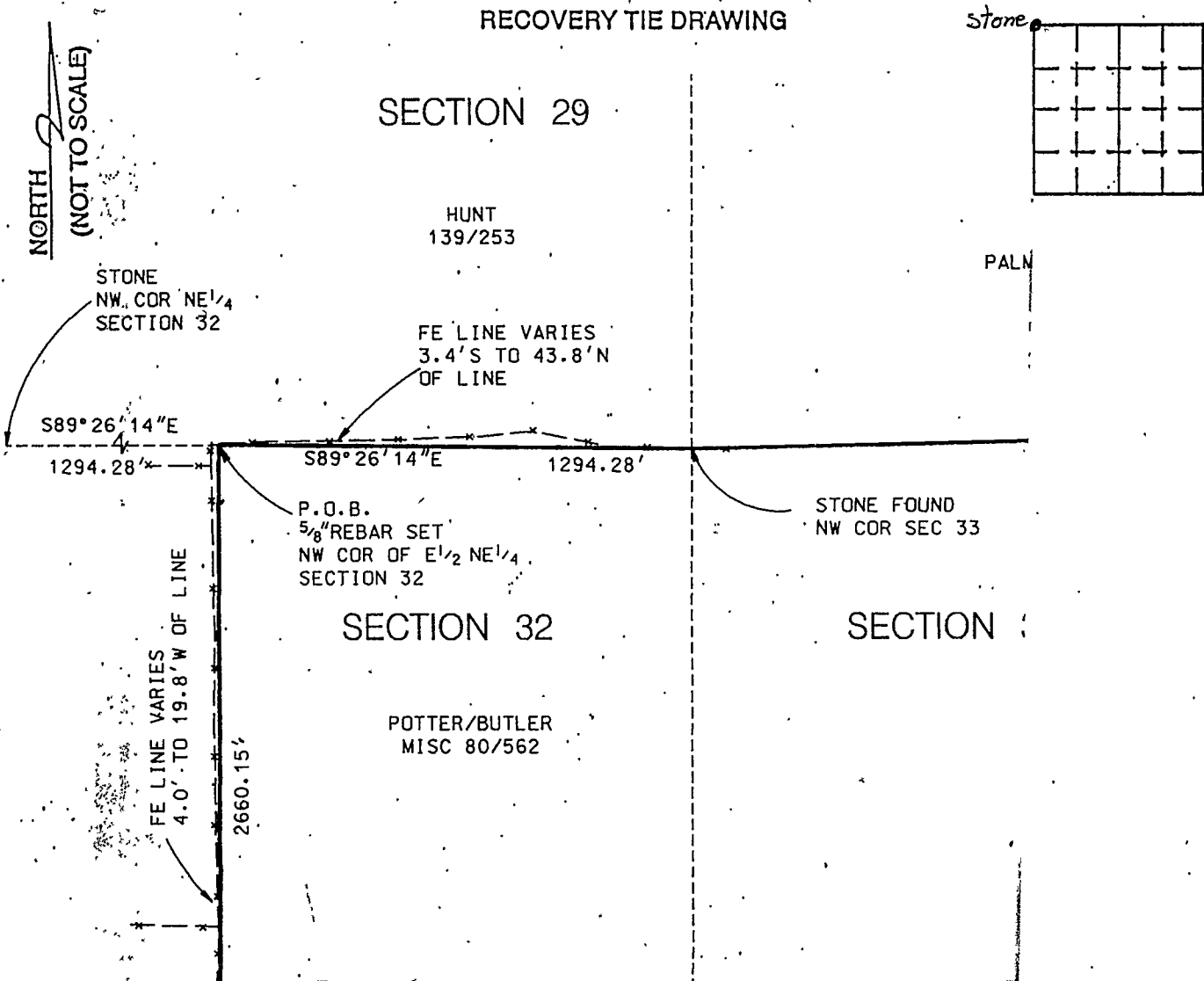


VERMILLION COUNTY, IND.  
**"MONUMENT RECORD"**  
 OF

LAND SURVEY MONUMENTS SITUATED IN SECTION 33, TOWNSHIP 17N,  
 RANGE 9W, OF THE 2 PRINCIPAL MERIDIAN,  
 COUNTY, INDIANA

MONUMENT DESCRIPTION AND REMARKS: Stone Found NW corner  
By: Ben E. Bledsoe 5/6/96 Job No: 0839  
see: Green Map Cabinet Drawer #1 (Folder) Blue Map  
Recorder's Office-Survey Book #1, Page 455

RECOVERY TIE DRAWING



STATE OF \_\_\_\_\_  
 COUNTY OF \_\_\_\_\_ SS.

SPACE RESERVED FOR  
 RECORDING OFFICER

I, \_\_\_\_\_, HEREBY  
 CERTIFY THAT THIS DOCUMENT WAS PREPARED  
 UNDER MY DIRECTION IN ACCORDANCE WITH  
 IND. CODE 36-2-12-11-(D)-(3) AND THE ABOVE  
 DATA IS GIVEN UNDER MY HAND AND SEAL  
 THIS \_\_\_\_\_ DAY OF \_\_\_\_\_, 19\_\_\_\_ A.D.

DATE FILED \_\_\_\_\_

INDIANA REGISTERED LAND SURVEYOR NO. \_\_\_\_\_

OR \_\_\_\_\_  
 UNITED STATES GOVERNMENT AGENCY

TITLE

