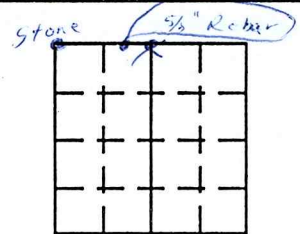


# VERMILION COUNTY, IND. "MONUMENT RECORD" OF

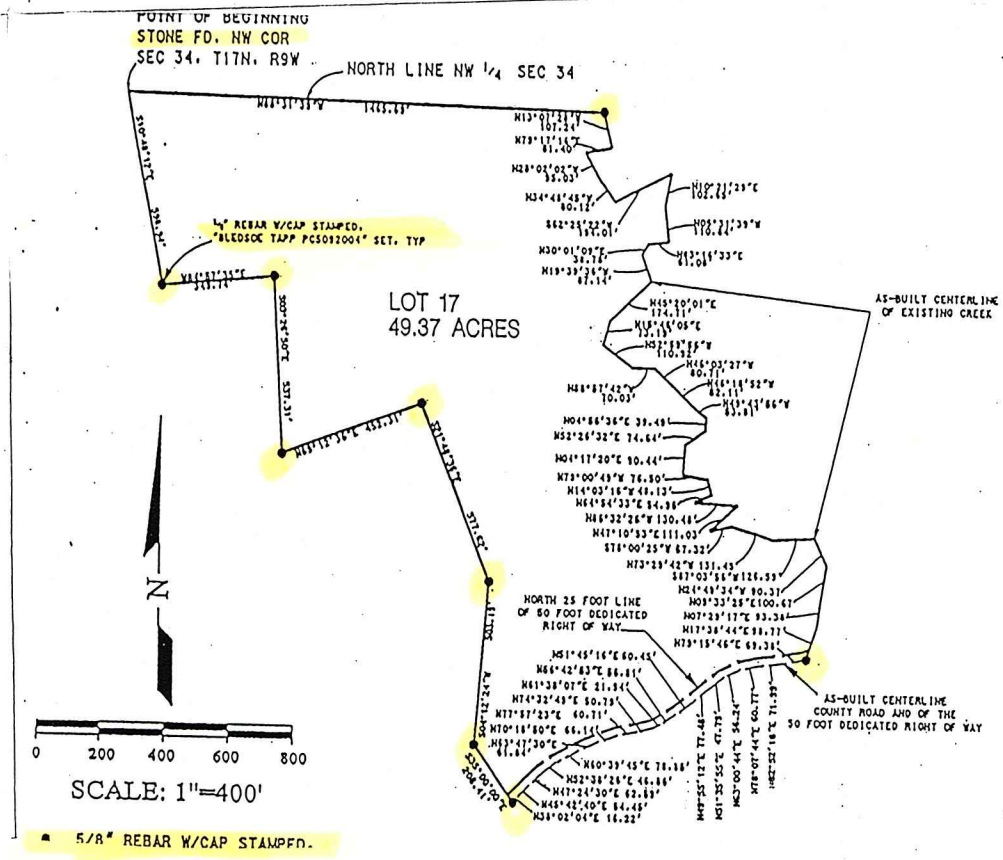
LAND SURVEY MONUMENTS SITUATED IN SECTION 34, TOWNSHIP 17N,  
RANGE 9W, OF THE 2<sup>nd</sup> PRINCIPAL MERIDIAN, Vermillion,  
COUNTY, INDIANA

MONUMENT DESCRIPTION AND REMARKS: Bledsoe Tapp & Riggert, Inc. for  
Southwestern Acceptance Corporation Recorded Aug. 25, 1997  
Deed # 165, P. 224, Stone Found @ NW Corner of NW 1/4  
Several 5/8" Rebar Set

RECOVERY TIE DRAWING



NORTH  
(NOT TO SCALE)



STATE OF \_\_\_\_\_  
COUNTY OF \_\_\_\_\_ SS

I, Ben E. Bledsoe, HEREBY  
CERTIFY THAT THIS DOCUMENT WAS PREPARED  
UNDER MY DIRECTION IN ACCORDANCE WITH  
IND. CODE 36-2-12-11-(D)-(3) AND THE ABOVE  
DATA IS GIVEN UNDER MY HAND AND SEAL  
THIS 30<sup>th</sup> DAY OF July, 19 97 A.D.

INDIANA REGISTERED LAND SURVEYOR NO. 50559  
OR \_\_\_\_\_  
UNITED STATES GOVERNMENT AGENCY

TITLE \_\_\_\_\_

SPACE RESERVED FOR  
RECORDING OFFICER

DATE FILED \_\_\_\_\_

