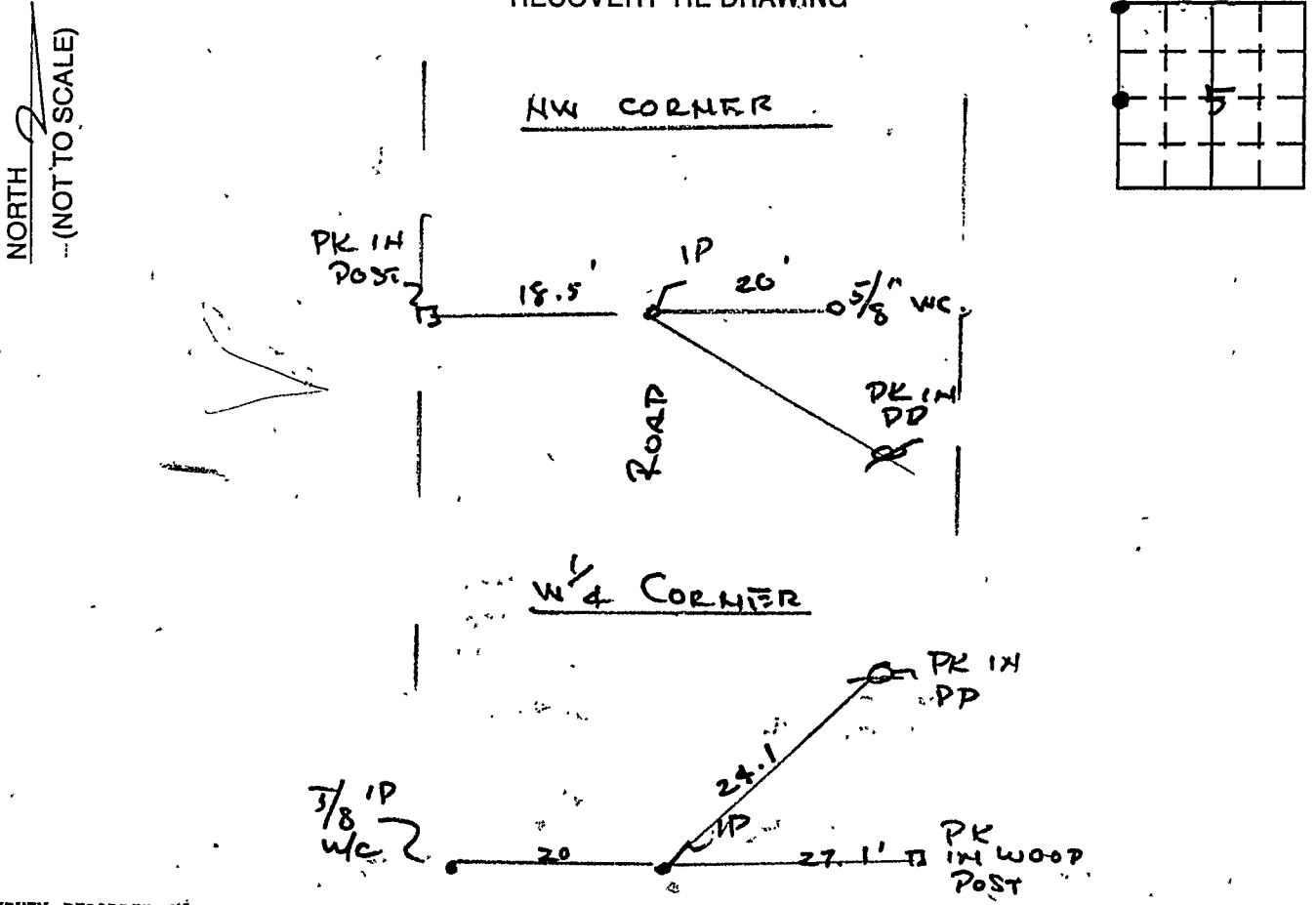


VERMILLION COUNTY, IND.
"MONUMENT RECORD"
 OF

LAND SURVEY MONUMENTS SITUATED IN SECTION 5, TOWNSHIP 18 N,
 RANGE 10 W, OF THE 2ND PRINCIPAL MERIDIAN; VERMILLION
 COUNTY, INDIANA

MONUMENT DESCRIPTION AND REMARKS: SET 3/8" x 30" IRON PIN
AT W 1/4 CORNER AND NW 1/4 CORNER.

RECOVERY TIE DRAWING



SURVEY RECORDED IN
 SURVEYOR'S OFFICE
 VERMILLION COUNTY INDIANA
 SURVEY RECORD BOOK # 1
 Monument
 PAGE # 12 DATE 1/13/95
 CO. SURVEYOR John May

STATE OF IL
 COUNTY OF EDGAR SS
 I, CHARLES J. BECHER, HEREBY
 CERTIFY THAT THIS DOCUMENT WAS PREPARED
 UNDER MY DIRECTION IN ACCORDANCE WITH
 IND. CODE 36-2-12-11-(D)-(3) AND THE ABOVE
 DATA IS GIVEN UNDER MY HAND AND SEAL
 THIS 27 DAY OF DEC., 19 94 A.D.
Charles J. Becher
 INDIANA REGISTERED LAND SURVEYOR NO. 0099
 OR _____
 UNITED STATES GOVERNMENT AGENCY

 TITLE

SPACE RESERVED FOR
 RECORDING OFFICER
John May
 DATE FILED 1/13/95

