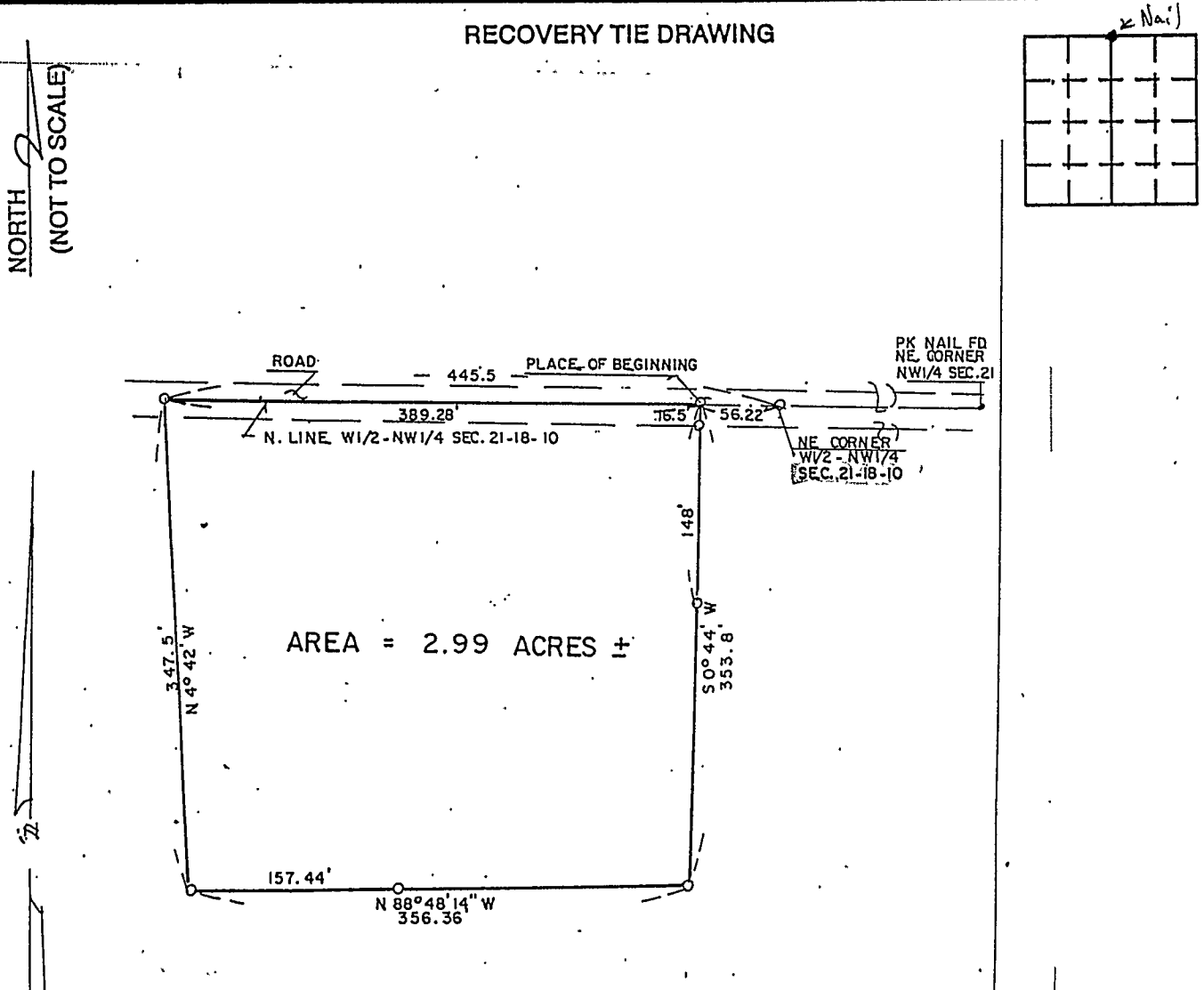


VERMILLION COUNTY, IND. "MONUMENT RECORD" OF

LAND SURVEY MONUMENTS SITUATED IN SECTION 21, TOWNSHIP 18N,
RANGE 104W, OF THE 2 PRINCIPAL MERIDIAN,
COUNTY, INDIANA

MONUMENT DESCRIPTION AND REMARKS: PK Nail Found NE corner NW 1/2
Done By: Charles J. Becher #97-434
see: Field Survey Book #3 or Survey Record 1 page 346

RECOVERY TIE DRAWING



STATE OF _____
COUNTY OF _____ SS

I, _____, HEREBY
CERTIFY THAT THIS DOCUMENT WAS PREPARED
UNDER MY DIRECTION IN ACCORDANCE WITH
IND. CODE 36-2-12-11-(D)-(3) AND THE ABOVE
DATA IS GIVEN UNDER MY HAND AND SEAL
THIS _____ DAY OF _____, 19____ A.D.

SPACE RESERVED FOR
RECORDING OFFICER

DATE FILED _____

