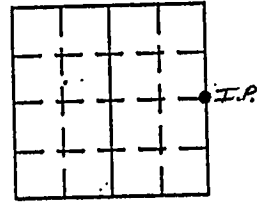


VERMILLION COUNTY, IND. "MONUMENT RECORD" OF

LAND SURVEY MONUMENTS SITUATED IN SECTION 31, TOWNSHIP 18N,
RANGE 10W, OF THE 2 PRINCIPAL MERIDIAN,
COUNTY, INDIANA

MONUMENT DESCRIPTION AND REMARKS: 1" Iron Pipe Set NE corner S 1/2
IN-IL Line By: Robert L. McClintock 1/4/85
see: Plat Book 1 pg 27+28

RECOVERY TIE DRAWING

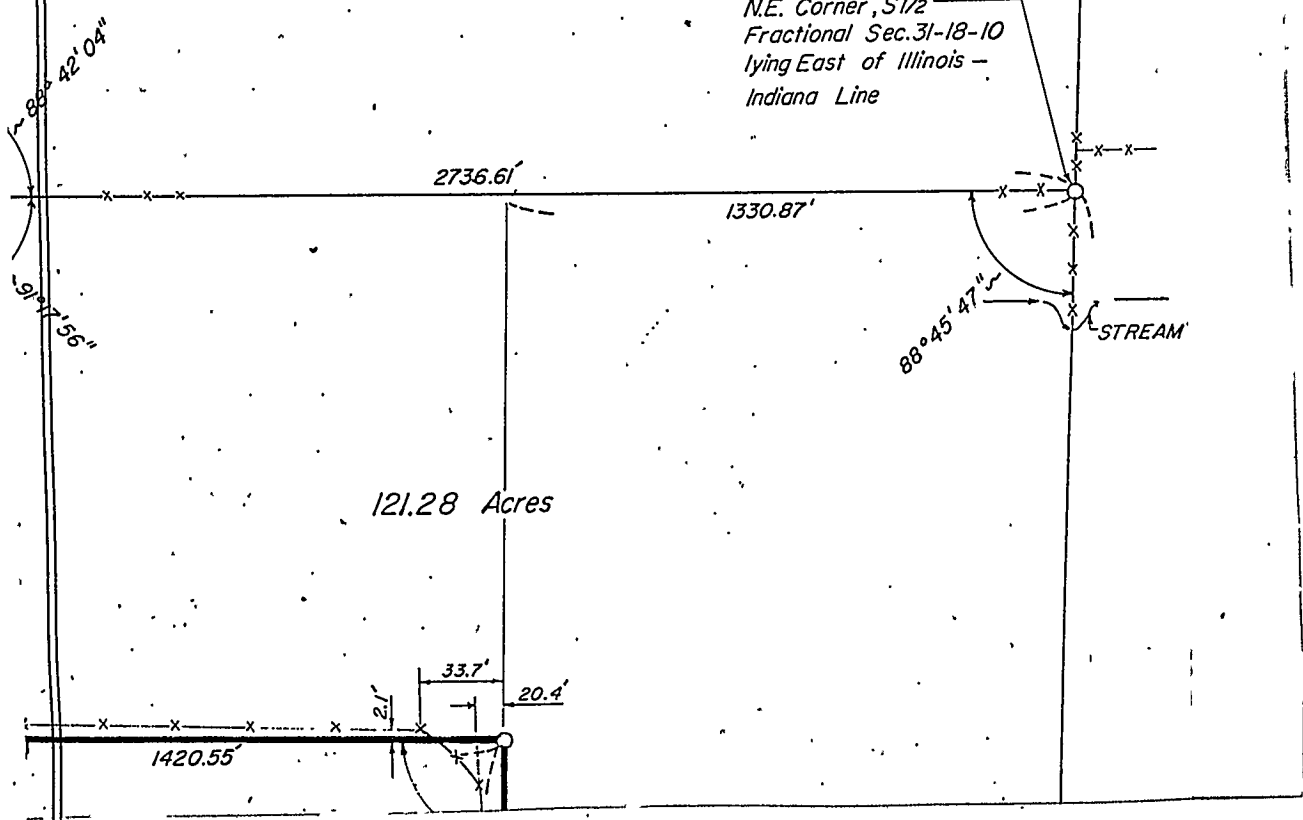


NORTH
(NOT TO SCALE)

the head at this apparent location. We measured from this nail to point A and pro-rated a dimension along this line to set point B. This was marked well with an existing old fence running easterly from that point.

The original government field notes indicated that the east quarter corner of Section 31 was set 330' north of a branch. We found the intersection of north-south and an east-west fence at a point 291' north of a branch in that same location. We accepted this as the east quarter-corner of Section 31-18-10 and drove an iron pipe there.

*N.E. Corner, S 1/2
Fractional Sec. 31-18-10
lying East of Illinois -
Indiana Line*



STATE OF _____
COUNTY OF _____ SS

SPACE RESERVED FOR
RECORDING OFFICER

I, _____, HEREBY
CERTIFY THAT THIS DOCUMENT WAS PREPARED
UNDER MY DIRECTION IN ACCORDANCE WITH
IND. CODE 36-2-12-11-(D)-(3) AND THE ABOVE
DATA IS GIVEN UNDER MY HAND AND SEAL
THIS _____ DAY OF _____, 19____ A.D.

DATE FILED _____

