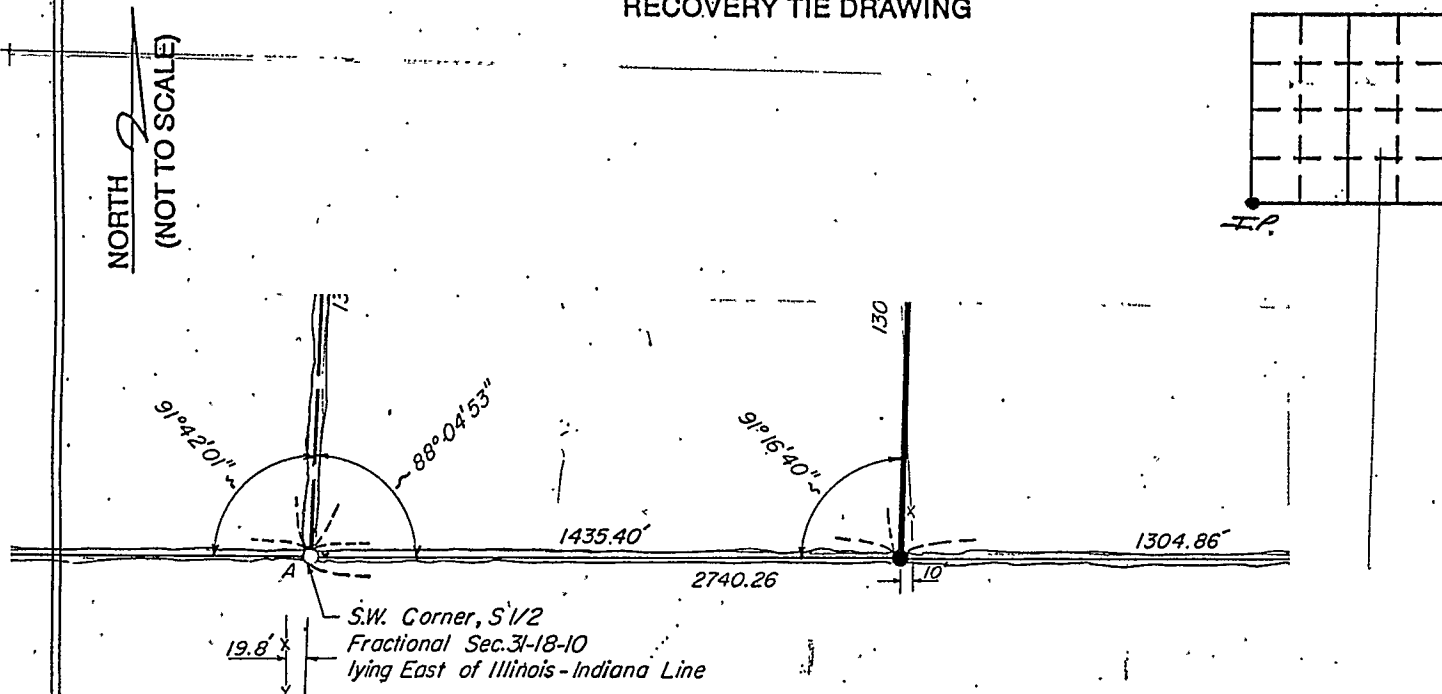


# VERMILLION COUNTY, IND. "MONUMENT RECORD" OF

LAND SURVEY MONUMENTS SITUATED IN SECTION 31, TOWNSHIP 18N,  
RANGE 10W, OF THE 2 PRINCIPAL MERIDIAN,  
COUNTY, INDIANA

MONUMENT DESCRIPTION AND REMARKS: 1" Iron Pipe Set SW corner S 1/2  
TN-IL Line By: Robert L. McClintock 1/4/85  
see: Plat Book 1 pg 27+28

### RECOVERY TIE DRAWING



RECEIVED FOR RECORD  
This 11 day of July, A. D. 1985  
At 9:30 o'clock P.M. and Recorded in  
Plat Record 1 Page 27+28  
*Charlotte Kirkman*  
Recorder Vermillion County, Ind.  
FEE 13.00 pd.

JOB# 50082-2

STATE OF \_\_\_\_\_  
COUNTY OF \_\_\_\_\_ SS

I, \_\_\_\_\_, HEREBY  
CERTIFY THAT THIS DOCUMENT WAS PREPARED  
UNDER MY DIRECTION IN ACCORDANCE WITH  
IND. CODE 36-2-12-11-(D)-(3) AND THE ABOVE  
DATA IS GIVEN UNDER MY HAND AND SEAL  
THIS \_\_\_\_\_ DAY OF \_\_\_\_\_, 19\_\_\_\_ A.D.

INDIANA REGISTERED LAND SURVEYOR NO. \_\_\_\_\_  
OR \_\_\_\_\_  
UNITED STATES GOVERNMENT AGENCY  
TITLE \_\_\_\_\_

SPACE-RESERVED FOR \_\_\_\_\_  
RECORDING OFFICER  
DATE FILED \_\_\_\_\_

