

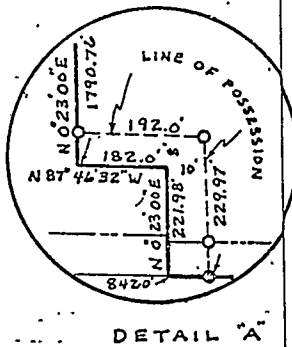
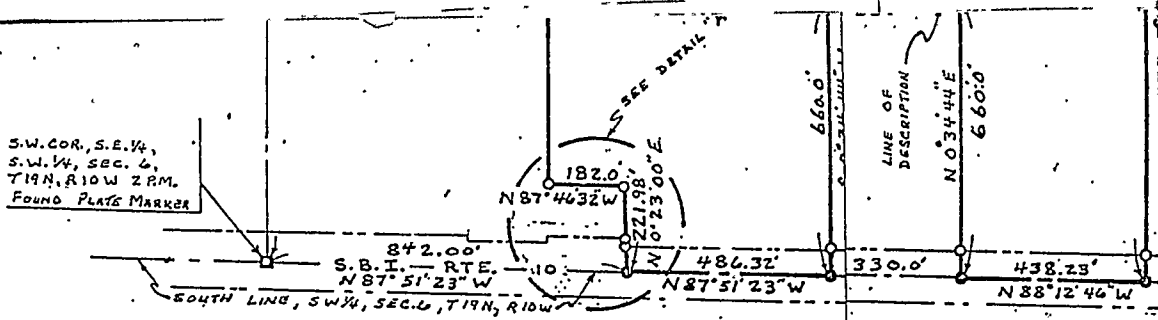
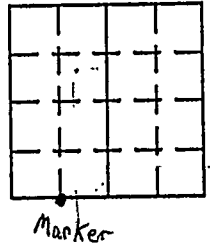
# VERMILION COUNTY, IND. "MONUMENT RECORD" OF

LAND SURVEY MONUMENTS SITUATED IN SECTION 6, TOWNSHIP 19N  
 RANGE 10W, OF THE 2 PRINCIPAL MERIDIAN,  
 COUNTY, INDIANA

MONUMENT DESCRIPTION AND REMARKS: Plate Marker Found SW corner SE 1/4 SW 1/4  
James Seaton By: Ronald R. Kreider 8/5/83  
see: Plat Book 1 pg 13+14

### RECOVERY TIE DRAWING

NORTH  
(NOT TO SCALE)



STATE OF ILLINOIS } SS

STATE OF \_\_\_\_\_  
 COUNTY OF \_\_\_\_\_ SS

I, \_\_\_\_\_, HEREBY  
 CERTIFY THAT THIS DOCUMENT WAS PREPARED  
 UNDER MY DIRECTION IN ACCORDANCE WITH  
 IND. CODE 36-2-12-11-(D)-(3) AND THE ABOVE  
 DATA IS GIVEN UNDER MY HAND AND SEAL  
 THIS \_\_\_\_\_ DAY OF \_\_\_\_\_, 19\_\_\_\_ A.D.

INDIANA REGISTERED LAND SURVEYOR NO. \_\_\_\_\_

OR \_\_\_\_\_  
 UNITED STATES GOVERNMENT AGENCY

TITLE \_\_\_\_\_

SPACE RESERVED FOR  
 RECORDING OFFICER

DATE FILED \_\_\_\_\_

