

VERMILLION COUNTY, IND.  
"MONUMENT RECORD"

OF

LAND SURVEY MONUMENTS SITUATED IN SECTION 8, TOWNSHIP 19N

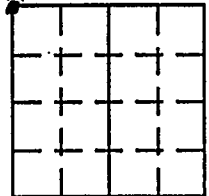
RANGE 10W, OF THE 2 PRINCIPAL MERIDIAN,

COUNTY, INDIANA

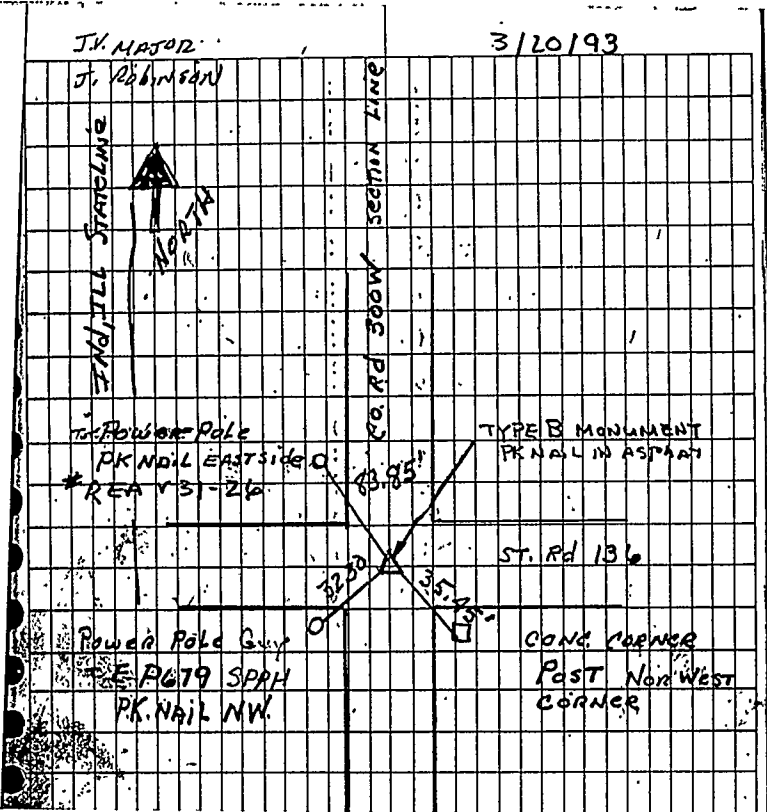
MONUMENT DESCRIPTION AND REMARKS: PK Nail Found NW corner  
From: Yellow Field Book By: John V Major 3/20/93 pg 11  
see: Gray File Cabinet Drawer #2

RECOVERY TIE DRAWING

No. 1



NORTH  
(NOT TO SCALE)



STATE OF \_\_\_\_\_

COUNTY OF \_\_\_\_\_ SS:

I, \_\_\_\_\_, HEREBY  
CERTIFY THAT THIS DOCUMENT WAS PREPARED  
UNDER MY DIRECTION IN ACCORDANCE WITH  
IND. CODE 36-2-12-11-(D)-(3) AND THE ABOVE  
DATA IS GIVEN UNDER MY HAND AND SEAL

THIS \_\_\_\_\_ DAY OF \_\_\_\_\_, 19 \_\_\_\_\_ A.D.

INDIANA REGISTERED LAND SURVEYOR NO. \_\_\_\_\_

OR \_\_\_\_\_

UNITED STATES GOVERNMENT AGENCY

TITLE

SPACE RESERVED FOR  
RECORDING OFFICER

DATE FILED \_\_\_\_\_

