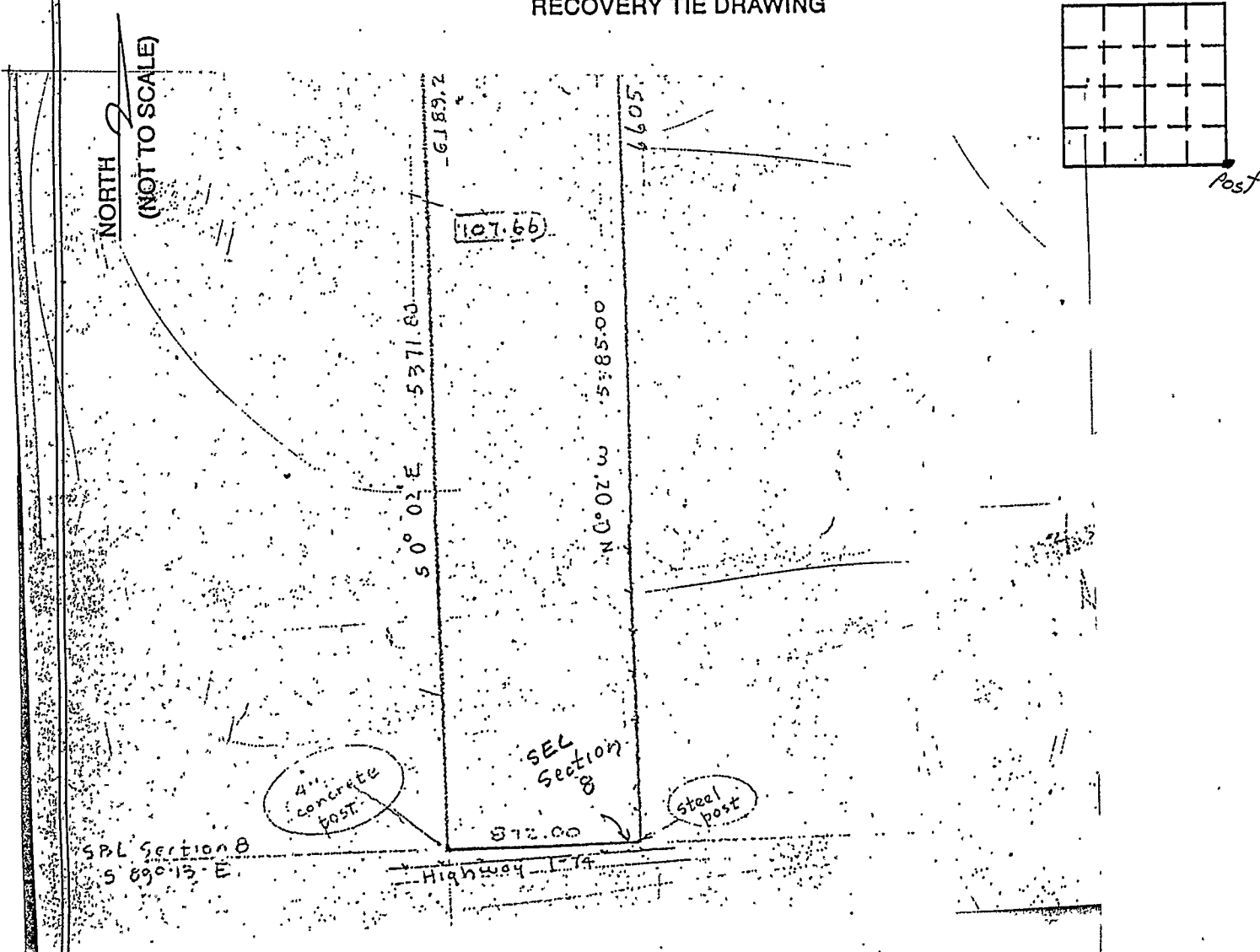


VERMILLION COUNTY, IND.  
**"MONUMENT RECORD"**  
 OF

LAND SURVEY MONUMENTS SITUATED IN SECTION 8, TOWNSHIP 19N,  
 RANGE 10W, OF THE 2 PRINCIPAL MERIDIAN,  
 COUNTY, INDIANA

MONUMENT DESCRIPTION AND REMARKS: Steel Post Found SE corner  
Robert S. Oswalt By: Arnald Carron 2/15/83  
see: Plat Book 1 pg 9

RECOVERY TIE DRAWING



STATE OF \_\_\_\_\_  
 COUNTY OF \_\_\_\_\_ SS

I, \_\_\_\_\_, HEREBY  
 CERTIFY THAT THIS DOCUMENT WAS PREPARED  
 UNDER MY DIRECTION IN ACCORDANCE WITH  
 IND. CODE 36-2-12-11-(D)-(3) AND THE ABOVE  
 DATA IS GIVEN UNDER MY HAND AND SEAL  
 THIS \_\_\_\_\_ DAY OF \_\_\_\_\_, 19\_\_\_\_ A.D.

INDIANA REGISTERED LAND SURVEYOR NO. \_\_\_\_\_  
 OR \_\_\_\_\_  
 UNITED STATES GOVERNMENT AGENCY

TITLE

SPACE RESERVED FOR  
 RECORDING OFFICER

DATE FILED \_\_\_\_\_

