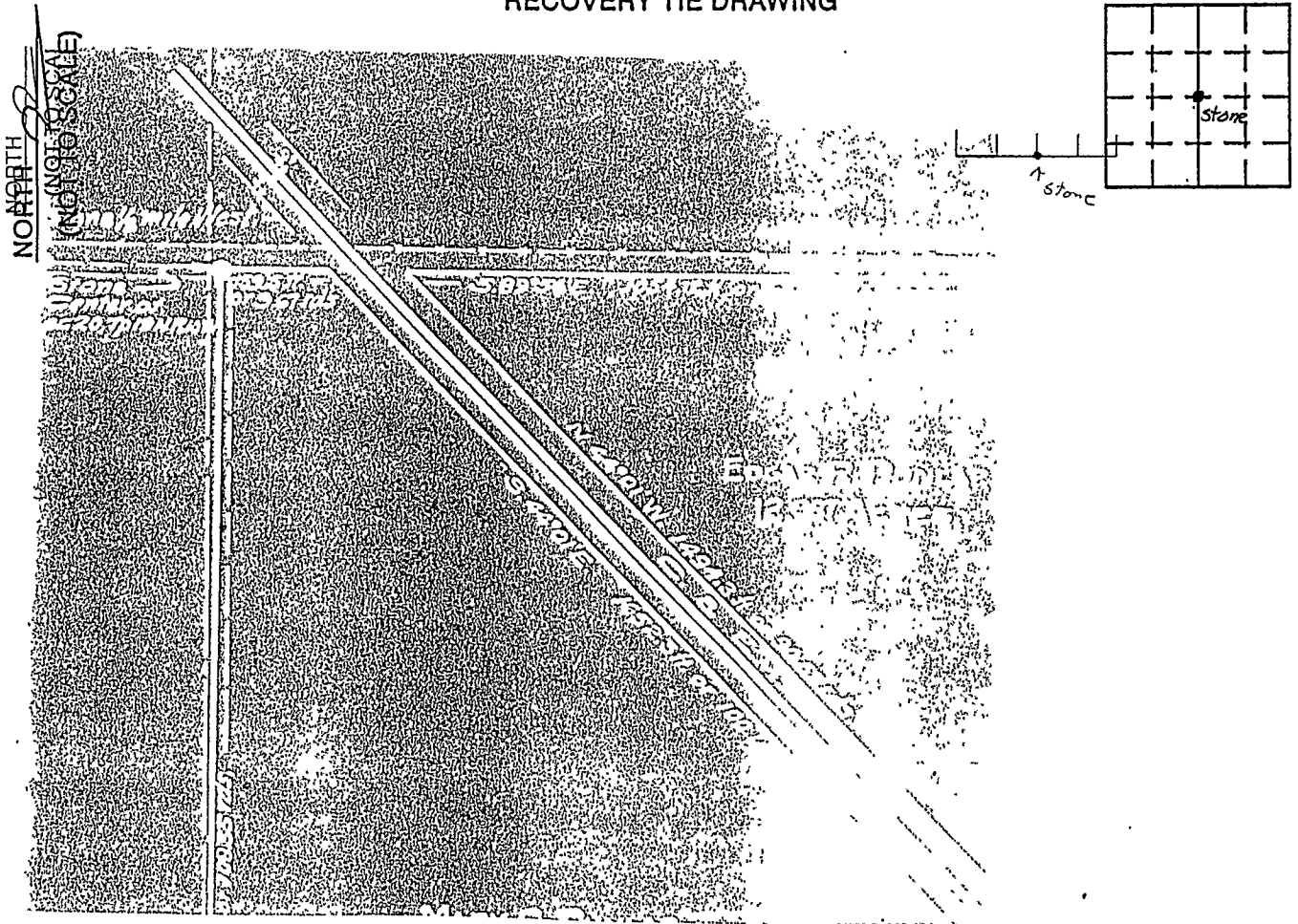


VERMILION COUNTY, IND.  
"MONUMENT RECORD"  
OF

LAND SURVEY MONUMENTS SITUATED IN SECTION 20, TOWNSHIP 19N,  
RANGE 10W, OF THE 2 PRINCIPAL MERIDIAN,  
COUNTY, INDIANA

MONUMENT DESCRIPTION AND REMARKS: Stone Found Center of sec 20  
Plat of Survey (Dunlap) Done By: H.L. Fillinger 3/44  
see: Green Map Cabinet Drawer #1 Blue

RECOVERY TIE DRAWING



STATE OF \_\_\_\_\_  
COUNTY OF \_\_\_\_\_ SS

SPACE RESERVED FOR  
RECORDING OFFICER

STATE OF \_\_\_\_\_  
COUNTY OF \_\_\_\_\_ SS

SPACE RESERVED FOR  
RECORDING OFFICER

I, \_\_\_\_\_, HEREBY  
CERTIFY THAT THIS DOCUMENT WAS PREPARED  
UNDER MY DIRECTION IN ACCORDANCE WITH  
IND. CODE 36-2-12-11-(D)-(3) AND THE ABOVE  
DATA IS GIVEN UNDER MY HAND AND SEAL

DATE FILED \_\_\_\_\_

THIS \_\_\_\_\_ DAY OF \_\_\_\_\_, 19\_\_\_\_ A.D.

