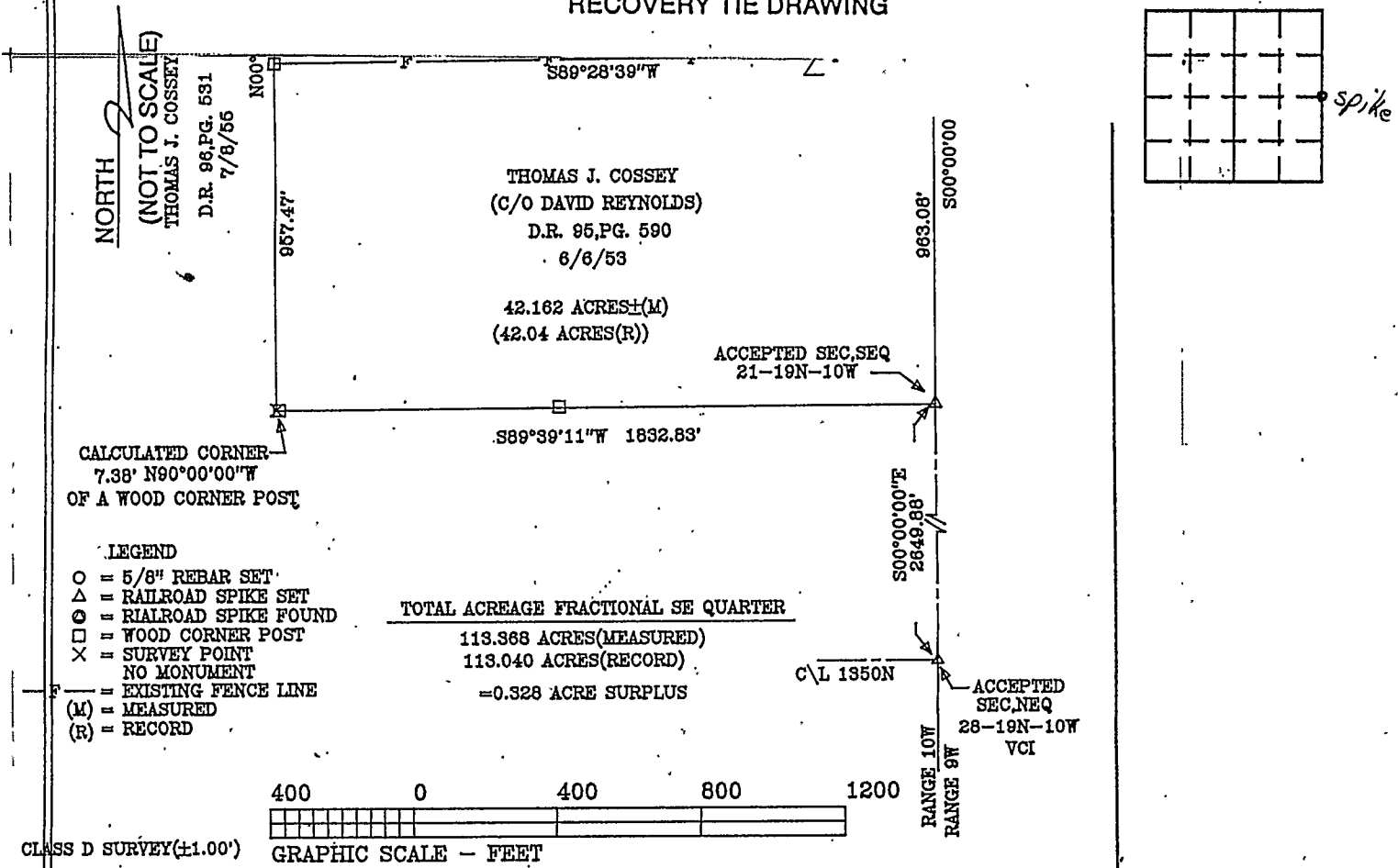


# VERMILLION COUNTY, IND. "MONUMENT RECORD" OF

LAND SURVEY MONUMENTS SITUATED IN SECTION 28, TOWNSHIP 19N,  
RANGE 10W, OF THE 2 PRINCIPAL MERIDIAN,  
COUNTY, INDIANA

MONUMENT DESCRIPTION AND REMARKS: Railroad Spike Set SE corner NE 1/4  
By: L. David Deckard 4/6/96 Project: 211910DV  
See: Green Map Cabinet Drawer #1 on Survey Record pg 317

### RECOVERY TIE DRAWING



## DECKARD ENGINEERING/SURVEYING INC.

PROJECT 211910DV	REGISTERED PROFESSIONAL	SCALE: 1" = 400'
UTHELLEN DAVIS	ENGINEER NO. 14018 * LAND SURVEYOR NO. 50 273	DRAWN BY: AED
D. RD. 100W & 1450N		CHECKED BY: LDD
		DATED: 4/26/96

STATE OF \_\_\_\_\_  
COUNTY OF \_\_\_\_\_ SS

I, \_\_\_\_\_, HEREBY  
CERTIFY THAT THIS DOCUMENT WAS PREPARED  
UNDER MY DIRECTION IN ACCORDANCE WITH  
IND. CODE 36-2-12-11-(D)-(3) AND THE ABOVE  
DATA IS GIVEN UNDER MY HAND AND SEAL  
THIS \_\_\_\_\_ DAY OF \_\_\_\_\_, 19\_\_\_\_ A.D.

INDIANA REGISTERED LAND SURVEYOR NO. \_\_\_\_\_

OR \_\_\_\_\_  
UNITED STATES GOVERNMENT AGENCY

TITLE

SPACE RESERVED FOR  
RECORDING OFFICER

DATE FILED \_\_\_\_\_

