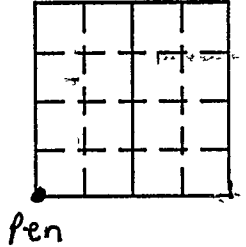
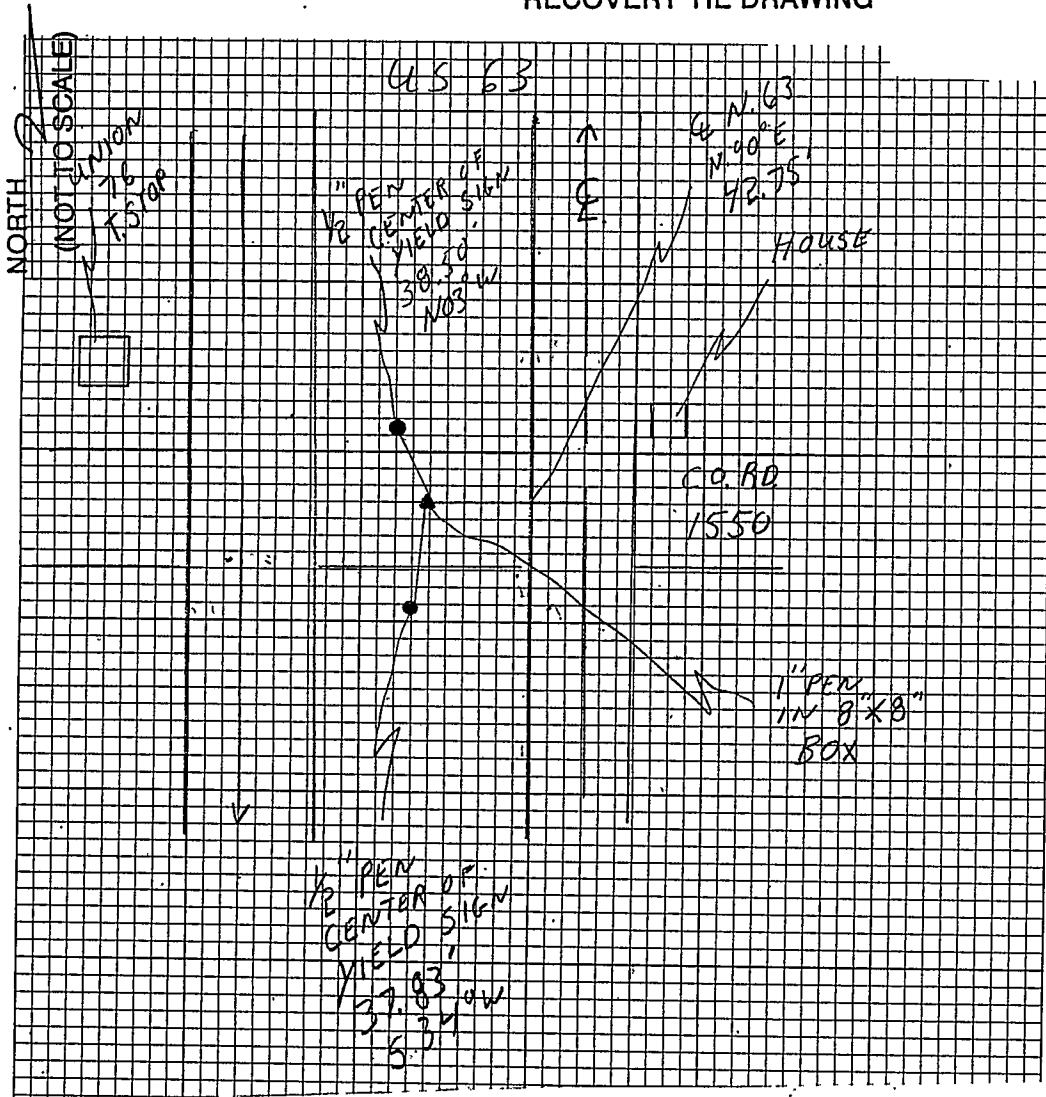


**VERMILLION COUNTY, IND.**  
**"MONUMENT RECORD"**  
 OF

LAND SURVEY MONUMENTS SITUATED IN SECTION 4, TOWNSHIP 19N,  
 RANGE 9W, OF THE 2 PRINCIPAL MERIDIAN,  
 COUNTY, INDIANA

MONUMENT DESCRIPTION AND REMARKS: 1" Pen in 8"x8" Box Found SW corner  
From: 1989 Lietz Cross Section Book pg 30 By: John V Major  
12/7/89 sec: Gray File Cabinet 2<sup>nd</sup> Drawer

RECOVERY TIE DRAWING



STATE OF \_\_\_\_\_  
 COUNTY OF \_\_\_\_\_ SS

I, \_\_\_\_\_, HEREBY  
 CERTIFY THAT THIS DOCUMENT WAS PREPARED  
 UNDER MY DIRECTION IN ACCORDANCE WITH  
 IND. CODE 36-2-12-11-(D)-(3) AND THE ABOVE  
 DATA IS GIVEN UNDER MY HAND AND SEAL

THIS \_\_\_\_\_ DAY OF \_\_\_\_\_, 19\_\_\_\_ A.D.

INDIANA REGISTERED LAND SURVEYOR NO. \_\_\_\_\_

OR \_\_\_\_\_  
 UNITED STATES GOVERNMENT AGENCY

TITLE

SPACE RESERVED FOR  
 RECORDING OFFICER

DATE FILED \_\_\_\_\_

