

VERMILLION COUNTY, IND.
"MONUMENT RECORD"
OF

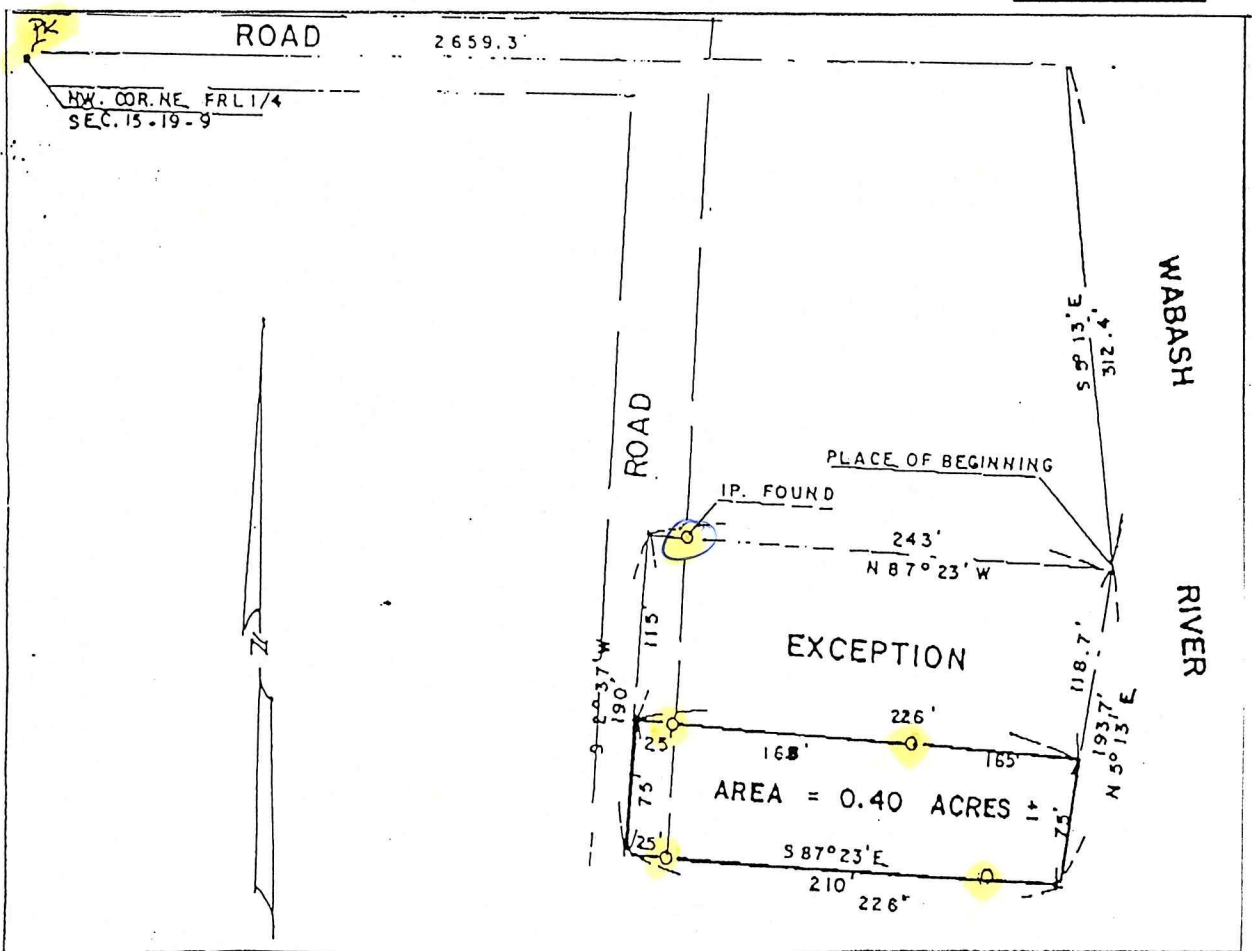
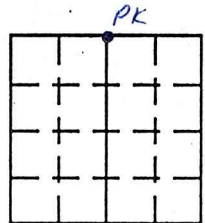
LAND SURVEY MONUMENTS SITUATED IN SECTION 15, TOWNSHIP 19W,
RANGE 9W, OF THE 2ND PRINCIPAL MERIDIAN, Vermillion
COUNTY, INDIANA

MONUMENT DESCRIPTION AND REMARKS: Charles J. Becher for Fern
D. Cline Realty PK Nail at NW corner NE 1/4
Several Iron Pins Set at Various Locations & IP Found

RECOVERY TIE DRAWING

NORTH
(NOT TO SCALE)

O = Iron Pin Set
Unless otherwise stated



STATE OF _____
COUNTY OF _____ SS
I, Charles J. Becher, HEREBY
CERTIFY THAT THIS DOCUMENT WAS PREPARED
UNDER MY DIRECTION IN ACCORDANCE WITH
IND. CODE 36-2-12-11-(D)-(3) AND THE ABOVE
DATA IS GIVEN UNDER MY HAND AND SEAL
THIS _____ DAY OF _____, 19 _____ A.D.
INDIANA REGISTERED LAND SURVEYOR NO. S-0094
OR _____
UNITED STATES GOVERNMENT AGENCY
TITLE _____

SPACE RESERVED FOR
RECORDING OFFICER

DATE FILED _____

