

SECTION CORNER RECORD

SH9

VERMILLION COUNTY SURVEYOR'S OFFICE

State Plane grid coordinates NAD83 (2011):

North: 1646511.54 East: 2866805.12 (U.S. survey feet)

Type of monument: Divot in top of stone

Depth: Three inches above grade

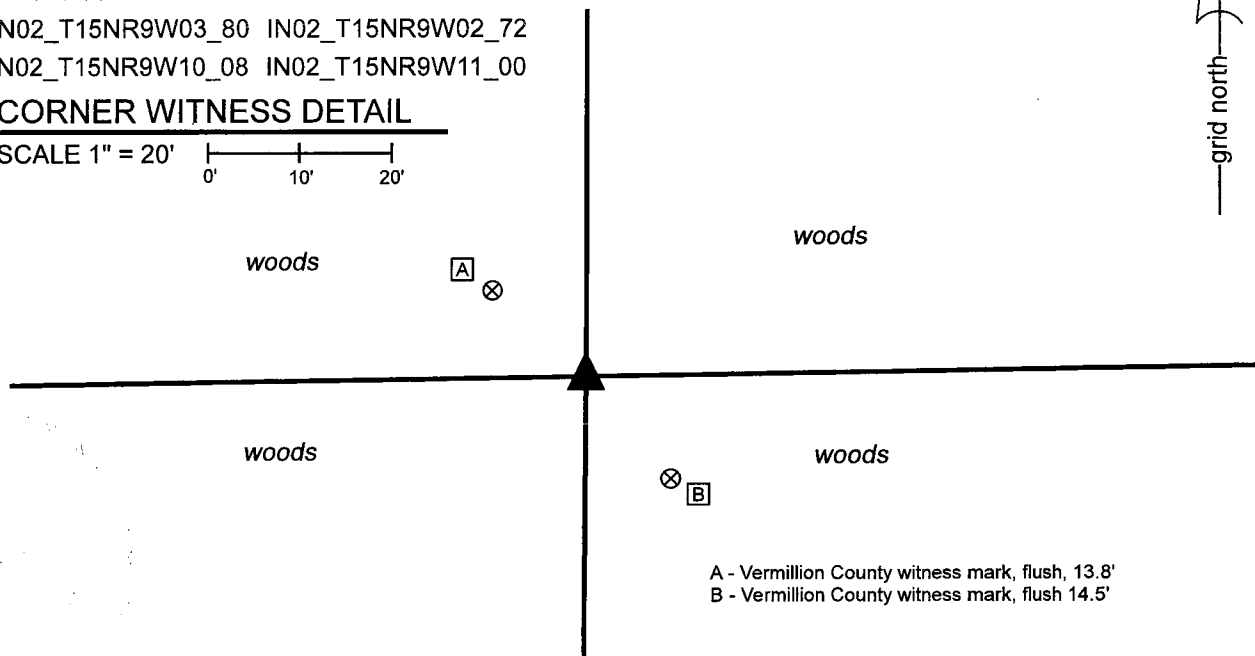
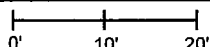
Indiana tie card references:

IN02_T15NR9W03_80 IN02_T15NR9W02_72

IN02_T15NR9W10_08 IN02_T15NR9W11_00

CORNER WITNESS DETAIL

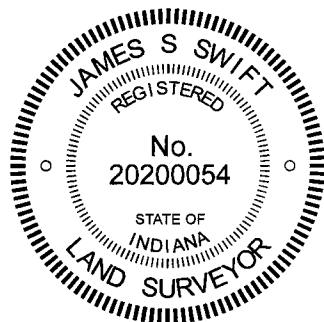
SCALE 1" = 20'



A - Vermillion County witness mark, flush, 13.8'
B - Vermillion County witness mark, flush 14.5'

The stone was found in place and held as marking the corner. No specific documentation was found in the Vermillion County Surveyors Office referencing this stone. Several surveys call for a stone as marking this corner, including surveys recorded as Instrument 2014000144, 2021003130, and 2023000832, Office of the Vermillion County Recorder. The stone called for on those surveys was located on June 21, 2023. The above-ground portion of the stone is 10 inches N-S by 5 inches E-W. A distinct divot is located in the top, center of the stone. A diagram indicating the adjacent sections 2, 3, 10, 11 is also carved into the top of the stone. The divot in the top of the stone was held as the specific position of the corner. A steel t-post with white PVC sleeve labelled 'Survey Marker' was set adjacent to the stone.

2024000838 SECT COR \$0.00
06/05/2024 09:48:58A 1 PGS
Jennifer Peebles
Vermillion County Recorder IN
Recorded as Presented



Ronald A. Mack
Ronald A. Mack, County Surveyor

James S. Swift
James S. Swift, IN LS 20200054
July 25, 2023

