

SECTION CORNER RECORD

SK8-E.5

VERMILLION COUNTY SURVEYOR'S OFFICE

State Plane grid coordinates NAD83 (2011):
North: 1630547.38 East: 2864030.32 (U.S. survey feet)

Type of monument: Aluminum disk stamped
'Eli Lilly and Company Boundary Marker'
Depth: flush with road surface

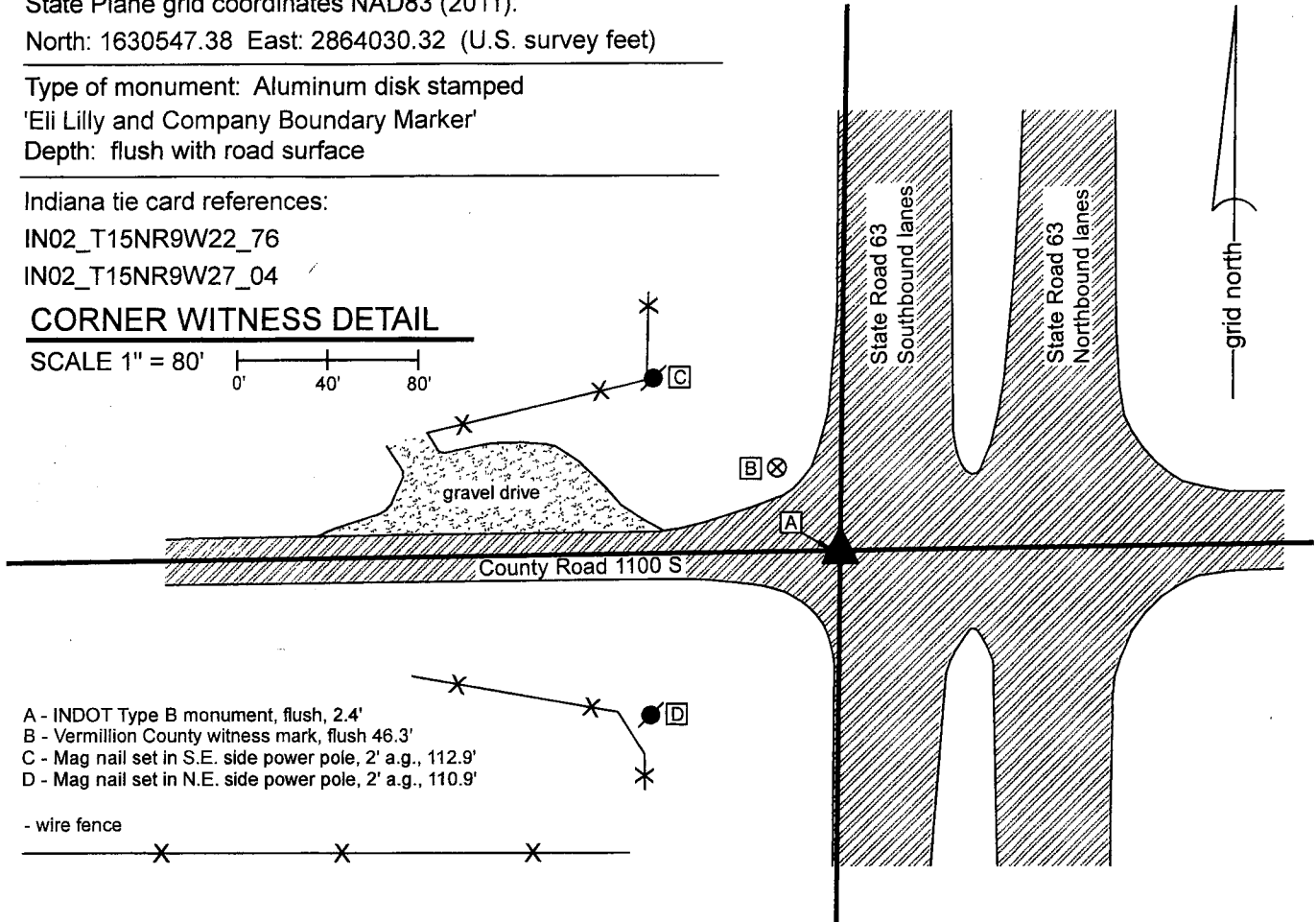
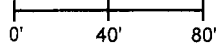
Indiana tie card references:

IN02_T15NR9W22_76

IN02_T15NR9W27_04

CORNER WITNESS DETAIL

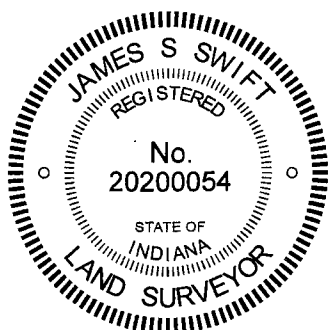
SCALE 1" = 80'



- A - INDOT Type B monument, flush, 2.4'
- B - Vermillion County witness mark, flush 46.3'
- C - Mag nail set in S.E. side power pole, 2' a.g., 112.9'
- D - Mag nail set in N.E. side power pole, 2' a.g., 110.9'

- wire fence

The 'Eli Lilly and Company Boundary Marker' was found in place and held as marking the corner. This monument was set as part of a survey by John V. Schneider, LS No. S0115 dated September 12, 1980 for Eli Lilly and Company. The survey states that the monument is a 1-inch aluminum rod set in concrete with an aluminum disk. The survey represents the retracement and establishment of the boundaries of a large area in Sections 14, 15, 22 and 23, T15N, R9W. The survey does not offer a specific rationale for why the monument was set in the position where it was set, though it fits well with surrounding corners, being nearly equidistant from a similar monument marking the southeast corner of Section 22 and an iron pipe ostensibly marking the southwest corner of Section 22. Plans for State Road 63, "F Project No. 305 (4) (1948)" which were supplied by INDOT, do not show a specific location for this corner. The plans show the east-west section line as being coincident with the center of the east-west county road, which fits well with this corner.



Ronald A. Mack
Ronald A. Mack, County Surveyor

James S. Swift

James S. Swift, IN LS 20200054
December 6, 2023 (Revised 6/4/2024)

Helt Township

