

# SECTION CORNER RECORD

## VERMILLION COUNTY SURVEYOR'S OFFICE

NE 8 STD  
NE 8 CLS

State Plane grid coordinates NAD83 (2011):

Corner 1 (NE 8 STD): North: 1713517.45 East: 2849782.12 (U.S. survey feet)  
Corner 2 (NE 8 CLS): North: 1713511.26 East: 2849452.06 (U.S. survey feet)

Both corners: INDOT Type B monument, flush with adjacent road surface

Indiana tie card references:

IN02\_T18NR9W33\_72 IN02\_T18NR9W32\_80  
IN02\_T17NR9W05\_08 IN02\_T17NR9W04\_00

### CORNER WITNESS DETAIL

SCALE 1" = 100'

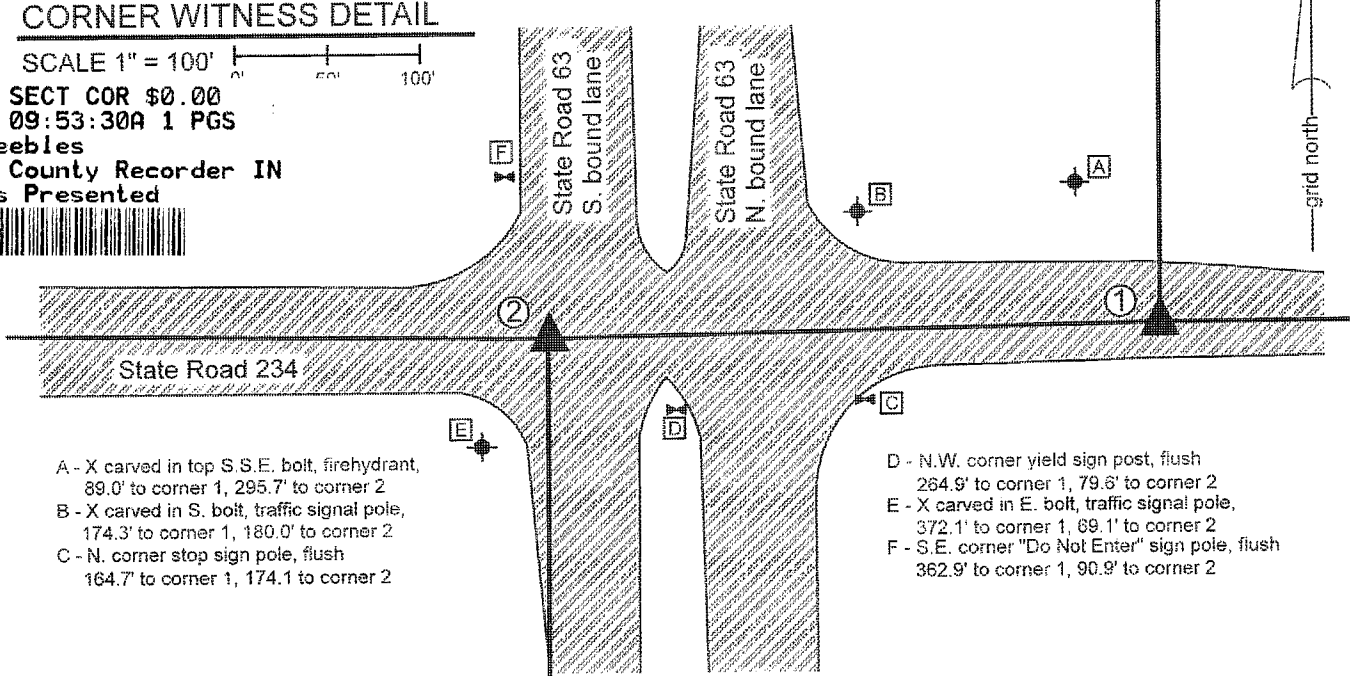
24000845 SECT COR \$0.00  
05/2024 09:53:30A 1 PGS  
Jennifer Peebles  
Vermillion County Recorder IN  
Recorded as Presented



① S.E. Corner, Section 32  
S.W. Corner, Section 33  
T 18 N, R 9 W

② N.W. Corner, Section 4  
N.E. Corner, Section 5  
T 17 N, R 9 W

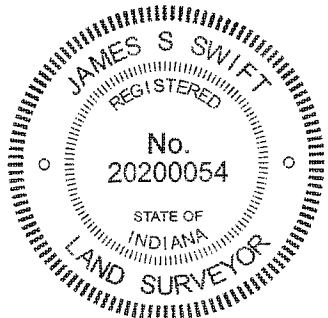
Distance between monuments:  
330.12'  
Original federal closing distance:  
504 links = 332.6'



- A - X carved in top S.S.E. bolt, firehydrant, 89.0' to corner 1, 295.7' to corner 2
- B - X carved in S. bolt, traffic signal pole, 174.3' to corner 1, 180.0' to corner 2
- C - N. corner stop sign pole, flush 164.7' to corner 1, 174.1 to corner 2

- D - N.W. corner yield sign post, flush 264.9' to corner 1, 79.6' to corner 2
- E - X carved in E. bolt, traffic signal pole, 372.1' to corner 1, 69.1' to corner 2
- F - S.E. corner "Do Not Enter" sign pole, flush 362.9' to corner 1, 90.9' to corner 2

The INDOT Type B Monuments were found in place.  
Corner 1, being the standard corner, was originally set in 1819. The original federal field notes state, "...West on South Boundary of Sec. 32..... 80.00 [chains] Set post cor. Secs. 31 & 32 from which..." References to bearing trees and land type follow.  
Corner 2, being the closing corner, was originally set in 1820. The original federal field notes state, "... North between Secs. 4 & 5... 58.50 [chains] Intersect North Boundary 504 lks W. of post. Set post at intersection Cor. to Secs. 4 & 5 from which..." References to bearing trees and land type follow.  
VCS tie cards dated 1989 show these corners on two separate sheets, with no cross reference to the distance between the monuments. Both sheets call the corners as "rod set in Concrete in steel box with Cover in C/L Hwy #234". The graphic representations shown on the documents match the positions of the found INDOT Type B Monuments.  
The plans for S.R. 63, as shown on Sheet 15 of project F-306(8), 1968, show both corners, with with statements of "Monument Req'd See Sheet No." No sheet number is specified and the detail sheet for this intersection does not show the corners. No station and offset information is shown on Sheet 15. The positions of the corners, as demonstrated graphically on the plans, match the positions of the Type B Monuments found. It is noted that the plans show a line labeled 'Section Line' bearing north from Corner 1 and a line with identical label bearing south from Corner 2.  
The found monuments are 2.5 feet closer to each other than the original federal call of 504 links. The monuments fit reasonably well with the relative positions of other monuments found to the east and west, in S.R. 234. The found monuments were held as marking the respective corners.



*Ronald A. Mack*  
Ronald A. Mack, County Surveyor

*James S. Swift*  
James S. Swift, IN LS 20200054  
September 13, 2021

