

# SECTION CORNER RECORD

NQ2

## VERMILLION COUNTY SURVEYOR'S OFFICE

State Plane grid coordinates NAD83 (2011):

North: 1779415.27 East: 2828959.72 (U.S. survey feet)

Type of monument: INDOT TYPE B MONUMENT

Depth: Flush with adjacent road surface.

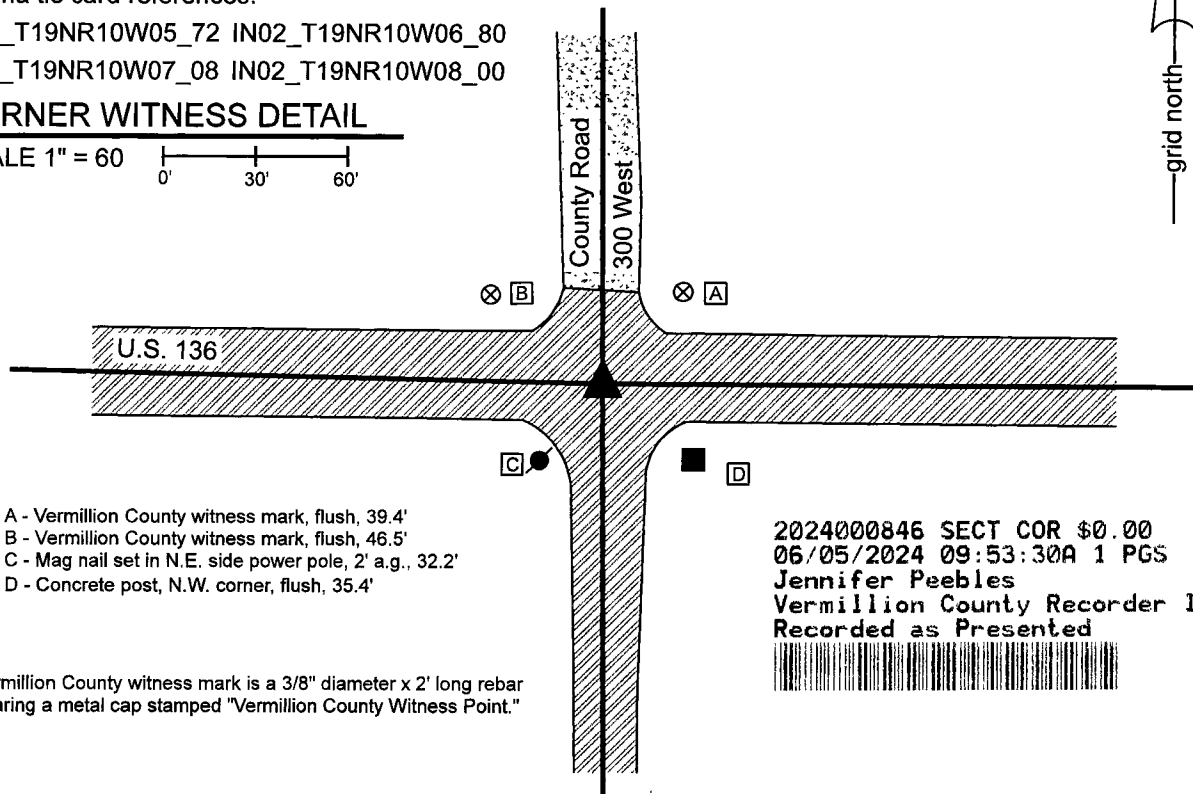
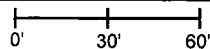
Indiana tie card references:

IN02\_T19NR10W05\_72 IN02\_T19NR10W06\_80

IN02\_T19NR10W07\_08 IN02\_T19NR10W08\_00

### CORNER WITNESS DETAIL

SCALE 1" = 60'



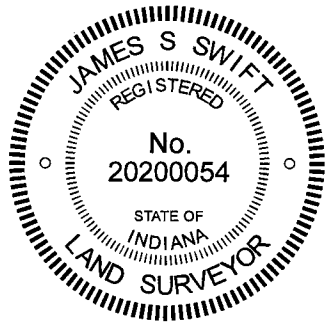
- A - Vermillion County witness mark, flush, 39.4'
- B - Vermillion County witness mark, flush, 46.5'
- C - Mag nail set in N.E. side power pole, 2' a.g., 32.2'
- D - Concrete post, N.W. corner, flush, 35.4'

2024000846 SECT COR \$0.00  
06/05/2024 09:53:30A 1 PGS  
Jennifer Peebles  
Vermillion County Recorder IN  
Recorded as Presented



Vermillion County witness mark is a 3/8" diameter x 2' long rebar bearing a metal cap stamped "Vermillion County Witness Point."

The INDOT Type B monument was found in place and held as marking the corner. A Vermillion County Surveyor tie sheet dated March 20, 1993 shows the corner as 'Type B monument P.K. Nail in Asphalt.' The position of the found monument precisely matches the distance tie to the northwest corner of a concrete post in the southeast quadrant of the intersection. Plans for U.S. 136 provided by INDOT (Federal Aid Project No. 94, fiscal year 1925) show a P.I. for the center of U.S. 136 at the intersection of a north-south line marked 'Section Line' with the notation 'monument required'. The plans do not specifically call out the P.I. as the section corner. The found monument is slightly south of the center of the road, matching the depiction of the corner as a P.I. on the 1925 plans. A survey recorded in Plat Record 1, pages 13-14, Office of the Vermillion County Recorder, certified August 5, 1983 by Ronald Kreidler calls the corner as 'found I.P. in vault.' A series of surveys by William J. Hudson including surveys recorded as Plat Record 2, pages 68-69 and Plat Record 2, page 83 show the corner as a P.K. Nail found. A series of surveys by L. David Deckard including a survey recorded in Survey Record 1, page 477 also show the corner as a P.K. Nail found. The position of the found Type B Monument agrees with the position of the corner shown on the Hudson and Deckard surveys relative to other monuments shown on those surveys and found in the field, and matches the 1993 tie card. As found, the top of the monument box is flush with the road surface, though the plug marking the corner is lower. It is not clear why the previous records call for a nail if the Type B monument was present, unless the main monument was previously paved over and the nail was set above. The found Type B monument matches the position of the corner as shown on the available recorded surveys, matches the position of the previous Vermillion County tie card, and was held as marking the corner.



*Ronald A. Mack*  
Ronald A. Mack, County Surveyor

*James S. Swift*  
James S. Swift, IN LS 20200054  
August 30, 2022

### Highland Township

Section 6 T19N, R10W	Section 5 T19N, R10W
Section 7 T19N, R10W	Section 8 T19N, R10W