

Chicago and Eastern Illinois Railroad
1915 Valuation Maps

VAL MAP NO	MILEPOST	SUBDIVISION	COUNTY/STATE	INDUSTRY 1	Township	Section	Township	Range	P.M.
B_V-2-34	128.0 to 128.5	Chicago Heights to Ind Line	Vermilion County, Illinois / Ve	Indiana State Line	Danville / Highland	18	19N	10W	2nd
B_V-4-4	61.0 to 65.0	Momence Jct. to Brazil	Kankakee County, Illinois / N	Elmer, IN	McCellan / Pembrok	25	30N	10W	2nd
B_V-6-3	96.0 to 99.9	Freeland Park Branch, IL	Iroquois County, Illinois / Ben	Benton Cty, IN	Stockland / Parish C	19	25N	10W	2nd
E_V-31-1	61.7 to 65	Indiana State Line to Brazil	Newton County, Indiana	Elmer, IN	McClellan / Beaver	25	30N	10W	2nd
E_V-31-2	65 to 69	Indiana State Line to Brazil	Newton County, Indiana	Morocco	Beaver	16	29N	9W	2nd
E_V-31-3	69 to 73	Indiana State Line to Brazil	Newton County, Indiana	Beaver City, IN	Beaver / Washington	35	29N	9W	2nd
E_V-31-4	73 to 77	Indiana State Line to Brazil	Newton County, Indiana	Brook, IN	Washington / Iroquo	18	28N	8W	2nd
E_V-31-5	77 to 81	Indiana State Line to Brazil	Newton County, Indiana	Weishaara, IN	Iroquois / Grant	33	28N	8W	2nd
E_V-31-6	81 tp 85	Indiana State Line to Brazil	Newton County, Indiana	Percy Jct, IN	Grant	14	27N	8W	2nd
E_V-31-7	85 to 89	Indiana State Line to Brazil	Newton / Benton County, Indiana		Grant / Union	12	26N	8W	2nd
E_V-31-8	89 to 93	Indiana State Line to Brazil	Benton County, Indiana	Wadena, IN	Union / Center	25	26N	8W	2nd
E_V-31-9	93 tp 97	Indiana State Line to Brazil	Benton County, Indiana	Barce, IN	Center	13	25N	8W	2nd
E_V-31-10	97 to 101	Indiana State Line to Brazil	Benton County, Indiana	Swanington, IN	Center / Oak Grove	1	24N	8W	2nd
E_V-31-11	101 to 105	Indiana State Line to Brazil	Benton / Warren County, Ind	Oxford, IN	Oak Grove / Adams	19	24N	7W	2nd
E_V-31-12	105 to 109	Indiana State Line to Brazil	Warren County, Indiana	Pine Village, IN	Adams	7	23N	7W	2nd
E_V 31-13	109 to 113	Indiana State Line to Brazil	Warren County, Indiana	Winthrop, IN	Adams / Warren	32	23N	7W	2nd
E_V 31-14	113 to 117	Indiana State Line to Brazil	Warren County, Indiana	Kickapoo, IN stub track	Warren	20	22N	7W	2nd
E_V 31-15	117 to 121	Indiana State Line to Brazil	Warren / Fountain County, In	Attica, IN	Washington / Logan	7	21N	7W	2nd
E_V-31-16	121 to 126	Indiana State Line to Brazil	Fountain County, Indiana	Rob Roy, IN	Shawnee	30	21N	7W	2nd
E_V-31-17	126 to 129	Indiana State Line to Brazil	Fountain County, Indiana	Stone Bluff, IN	Shawnee / Van Bure	18	20N	7W	2nd
E_V 31-18	129 to 133	Indiana State Line to Brazil	Fountain County, Indiana	Veedersburg, IN	Van Buren	6	19N	7W	2nd
E_V-31-19	133 to 137	Indiana State Line to Brazil	Fountain County, Indiana		Van Buren / Mill Cre	25	19N	8W	2nd
E_V-31-20	137 to 141	Indiana State Line to Brazil	Fountain County, Indiana	Yeddo, IN	Mill Creek	13	18N	8W	2nd
E_V-31-21	141 to 145	Indiana State Line to Brazil	Fountain / Parke County, Ind	Kingman, IN	Mill Creek / Liberty	2	17N	8W	2nd
E_V-31-22	145 to 149	Indiana State Line to Brazil	Parke County, Indiana	Tangier, IN	Liberty	22	17N	8W	2nd
E_V-31-23	149 to 153	Indiana State Line to Brazil	Parke County, Indiana	West Union, IN	Liberty / Reserve	7	16N	8W	2nd
E_V-31-24	153 to 157	Indiana State Line to Brazil	Parke County, Indiana	West Mulcher, IN B&O crossing	Reserve / Wabash	31	16N	8W	2nd
E_V-31-25	157 to 161	Indiana State Line to Brazil	Parke County, Indiana	Mecca, IN and Mecca Jct	Wabash	20	15N	8W	2nd
E_V-31-26	161 to 165	Indiana State Line to Brazil	Parke County, Indiana		Wabash / Florida	5	14N	8W	2nd
E_V-31-27	165 to 169	Indiana State Line to Brazil	Parke / Vigo County, Indiana	Coxville, IN and Rosedale, IN	Florida / Nevins	27	14N	8W	2nd
E_V-31-28	169 to 173	Indiana State Line to Brazil	Vigo County, Indiana	Coal Bluff, IN CCC&St. L	Nevins	12	13N	8W	2nd
E_V-31-29	173 to 177	Indiana State Line to Brazil	Vigo / Clay County, Indiana	Beech Grove, IN	Nevins / Dick Johnso	15	13N	7W	2nd
E_V-31-30	177 to 180	Indiana State Line to Brazil	Clay County, Indiana	Brazil, IN	Dick Johnson / Braz	25	13N	7W	2nd
E_S 31-6	84.0	Indiana State Line to Brazil	Newton County, Indiana	Goodland, IN (Station Map)	Grant	26	27N	8W	2nd
E_S 31-11	102.0	Indiana State Line to Brazil	Benton County, Indiana	Oxford, IN (Station Map)	Oak Grove		24N	7W	2nd
E_S 31-14	115.0	Indiana State Line to Brazil	Warren County, Indiana	Kickapoo , IN (Station Map)	Warren	20	22N	7W	2nd
E_S 31-15	119.0	Indiana State Line to Brazil	Fountain County, Indiana	Attica, IN (Station Map)	Logan	6	21N	7W	2nd
E_S 31-18	131.0	Indiana State Line to Brazil	Fountain County, Indiana	Veedersburg, IN (Station Map)	Van Buren	7	19N	7W	2nd
E_S 31-29	178.0	Indiana State Line to Brazil	Clay County, Indiana	Crawford No. 12 and No 14 mines	Dick Johnson	15	13N	7W	2nd
E_S 31-30	179.0	Indiana State Line to Brazil	Clay County, Indiana	Brazil yard and industry area	Brazil	25	13N	7W	2nd
E_S 31-30A	180.0	Indiana State Line to Brazil	Clay County, Indiana	Brazil shops, Vandalia RR conn	Brazil	36	13N	7W	2nd
E V 32-1	82 to 85	Percy Jct to Lacrosse, IN	Newton County, Indiana	Percy, IN	Grant / Iroquois	35	28N	8W	2nd
E V 32-2	85 to 89	Percy Jct to Lacrosse, IN	Newton County, Indiana	Foresman, IN	Iroquois	14	28N	8W	2nd
E V 32-3	89 to 93	Percy Jct to Lacrosse, IN	Newton County, Indiana	Mount Ayr	Iroquois / Jackson	26	29N	8W	2nd

Chicago and Eastern Illinois Railroad
1915 Valuation Maps

E V 32-4	93 to 97	Percy Jct to Lacrosse, IN	Newton County, Indiana	Kents Siding, IN	Jackson / Colfax	2 29N	8W	2nd
E V 32-5	97 to 101	Percy Jct to Lacrosse, IN	Newton / Jasper County, IN	Lawler Spur, Fair Oaks, IN	Colfax / Union	13 30N	8W	2nd
E V 32-6	101 to 105	Percy Jct to Lacrosse, IN	Jasper County, IN	Fair Oaks, IN - Monon crossing	Union	33 31N	7W	2nd
E V 32-7	105 to 109	Percy Jct to Lacrosse, IN	Jasper County, IN	Virgie, IN	Union / Keener / Wa	24 31N	7W	2nd
E V 32-8	109 to 113	Percy Jct to Lacrosse, IN	Jasper County, IN	Zadoo - Chicago & Wab Valley xing	Walker / Wheatfield	4 31N	6W	2nd
E V 32-9	113 to 117	Percy Jct to Lacrosse, IN	Jasper County, IN	Wheatfield, IN NYC crossing	Wheatfield / Kankak	25 32N	6W	2nd
E V 32-10	117 to 121	Percy Jct to Lacrosse, IN	Jasper / Porter County, IN	Dunns, IN	Kankakee / Pleasant	15 32N	5W	2nd
E V 32-11	121 to 125	Percy Jct to Lacrosse, IN	Porter / LaPorte County, IN	Wilders, IN - Erie and Monon xing	Pleasant / Dewey	6 32N	4W	2nd
E V 32-12	125 to 127.5	Percy Jct to Lacrosse, IN	LaPorte County, IN	LaCrosse, IN - PCC&St L, P. M cross	Dewey	20 33N	4W	2nd
E S 32-6	101.0	Percy Jct to Lacrosse, IN	Jasper County, Indiana	Fair Oaks, IN station map	Union	7 30N	7W	2nd
E S 32-12	127.0	Percy Jct to Lacrosse, IN	LaPorte County, Indiana	LaCrosse, IN station map	Dewey	17 33N	4W	2nd
D_V-33-1	98.0 to 100.0	Milford Jct. to Freeland Park, IL	Benton County, Indiana	Freeland Park, IN (Station Map)	Parish Grove	14 25N	10W	2nd
D_V-34-1	113.3 to 117	Rossville Jct. to Judyville, IL	Warren County, Indiana	Pence, IN detail map	Jordan	12 22N	10W	2nd
D_V-34-2	117.0 to 121.	Rossville Jct. to Judyville, IL	Warren County, Indiana	Finney, IN detail map	Jordan	15 22N	9W	2nd
D_V-34-3	121.0 to 124.0	Rossville Jct. to Judyville, IL	Warren County, Indiana		Jordan / Liberty	17 22N	8W	2nd
D_V-35-1	128.5 to 132.0	Ind State Line to Otter Creek	Vermillion County, Indiana	Rileysburg, IN (Station Map)	Highland	20 19N	10W	2nd
D_V-35-2	132.0 to 136.0	Ind State Line to Otter Creek	Vermillion County, Indiana	Perrysville, IN (Station Map)	Highland	32 19N	9W	2nd
D_V-35-3	136.0 to 140.0	Ind State Line to Otter Creek	Vermillion County, Indiana	Dickason, IN	Highland / Eugene	20 18N	9W	2nd
D_V-35-4	140.0-144.0	Ind State Line to Otter Creek	Vermillion County, Indiana	Cayuga, IN	Eugene	8 17N	9W	2nd
D_V-35-5	144.0-148.0	Ind State Line to Otter Creek	Vermillion County, Indiana	Newport, IN (Station Map)	Eugene / Vermillion	26 17N	9W	2nd
D_V-35-6	148.0 to 152.0	Ind State Line to Otter Creek	Vermillion County, Indiana	Worthy, IN (Station Map)	Vermillion / Helt	11 16N	9W	2nd
D_V-35-7	152.0 to 156.0	Ind State Line to Otter Creek	Vermillion County, Indiana	Hillsdale, IN	Helt	35 16N	9W	2nd
D_V-35-8	156.0 to 160.0	Ind State Line to Otter Creek	Vermillion County, Indiana	Lewis Pit, IN	Helt	22 15N	9W	2nd
D_V-35-9	160.0 to 164.0	Ind State Line to Otter Creek	Vermillion County, Indiana	Clinton, IN and Lyford, IN	Helt / Clinton / Florida	10 14N	9W	2nd
D_V-35-10	164.0 to 168.0	Ind State Line to Otter Creek	Parke / Vigo County, Indiana	Atherton, IN and Lyford, IN	Florida / Otter Creek	25 14N	9W	2nd
D_V-35-11	168.0 to 172.0	Ind State Line to Otter Creek	Vigo County, Indiana	Evans Lane, IN	Otter Creek	13 13N	9W	2nd
D_V-35-S-T3	137.0	Ind State Line to Otter Creek	Vermillion County, Indiana	Dickason, IN (Station Map)	Highland	17 18N	9N	2nd
D_V-35-S-T3A	136.0	Ind State Line to Otter Creek	Vermillion County, Indiana	Dickason Pit, IN (Station Map)	Eugene	20 18N	9W	2nd
D_V-35-S-T3B	139.0	Ind State Line to Otter Creek	Vermillion County, Indiana	Dickason Pit, IN (Station Map)	Eugene	29 18N	9W	2nd
D_V-35-S-T4	141.0	Ind State Line to Otter Creek	Vermillion County, Indiana	Cayuga, IN (Station Map)	Eugene	5 17N	9N	2nd
D_V-35-S-T7	154.3	Ind State Line to Otter Creek	Vermillion County, Indiana	Hillsdale, IN (Station Map)	Helt	2 15N	9W	2nd
D_V-35-S-T9	162.0	Ind State Line to Otter Creek	Vermillion County, Indiana	Jackson, IN (Station Map)	Clinton	10 14N	9W	2nd
D_V-35-S-T9A	162.5	Ind State Line to Otter Creek	Vermillion County, Indiana	Clinton, IN (Station Map)	Clinton	10 14N	9W	2nd
D_V-35-S-T9B	0 to 1.3	Lyford Mine Branch	Parke County, Indiana	Lyford, IN (Station Map)	Florida	14 14N	9W	2nd
D_V-35-S-T10	164.0	Ind State Line to Otter Creek	Parke County, Indiana	Lyford, IN (Station Map)	Florida	14 14N	9W	2nd
D_V-35-S-T10A	165.0	Ind State Line to Otter Creek	Parke County, Indiana	Lyford, IN (Station Map)	Florida	23 19N	9W	2nd
D_V-36-1	0 to 4.0	Clinton Coal Mine Branches	Vermillion Co, Indiana	Oak Hill No. 1	Clinton	21 14N	9W	2nd
D_V-36-2	4.0 to 8.0	Clinton Coal Mine Branches	Vermillion / Vigo County, Indiana	Oak Hill No 6 & 8	Clinton / Fayette	9 13N	9W	2nd
D_V-36-3	8.0	Clinton Coal Mine Branches	Vigo County, Indiana	Tecumseh	Fayette	21 13N	9W	2nd
D_V-36-2X1	2.0 to 3.3	Clinton Coal Mine Branches	Vermillion Co, Indiana	Oakhill No. 3	Clinton	7 14N	9W	2nd
D_V-36-3X1	2.1 to 3.1	Clinton Coal Mine Branches	Vermillion Co, Indiana	Crown Hill No. 2	Clinton	17 14N	9W	2nd
D_V-36-4X1	3.1 to 4.1	Clinton Coal Mine Branches	Vermillion Co, Indiana	Crown Hill No. 3	Clinton	20 14N	9W	2nd
D_V-36-5X1	4.1 to 5.3	Clinton Coal Mine Branches	Vermillion Co, Indiana	Crown Hill No. 4	Clinton	29 14N	9W	2nd
D_V-36-S-T1	2.4 to 3.4	Clinton Coal Mine Branches	Vermillion County, Indiana	Oak Hill No. 1	Clinton	14N	9W	2nd
D_V-36-S-T2	5.6 to 6.2	Clinton Coal Mine Branches	Vigo County, Indiana	Miami No. 8	Fayette	4 13N	9W	2nd

Chicago and Eastern Illinois Railroad
1915 Valuation Maps

Indiana

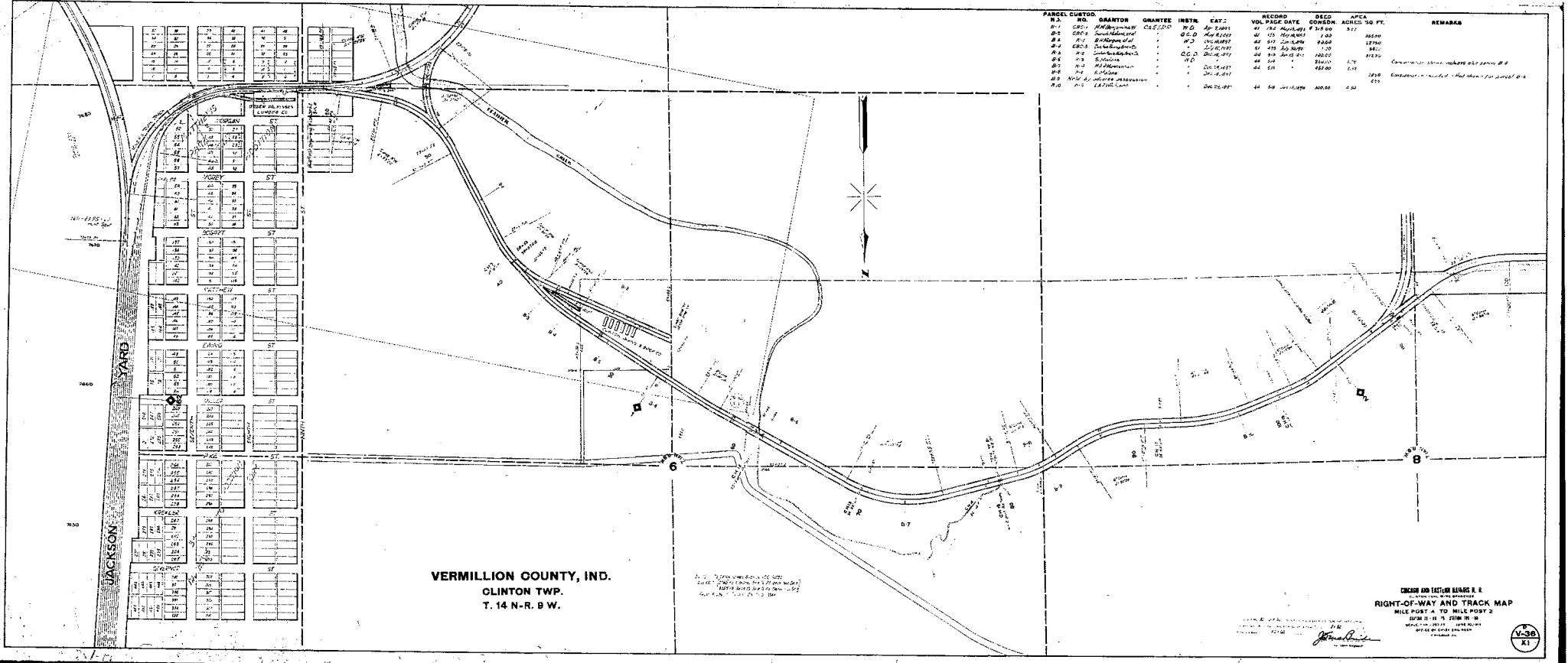
D_V-36-S-T2A	6.5 to 7.5	Clinton Coal Mine Branches	Vigo County, Indiana	Jackson Hill Mine	Fayette	16	13N	9W	2nd
D_V-36-S-TX1	0.0 to 0.9	Clinton Coal Mine Branches	Vermillion Co, Indiana	Clinton Paving and Brick	Clinton	9	14N	9W	2nd
D_V-36-X1	0.4 to 2.0	Clinton Coal Mine Branches	Vermillion Co, Indiana	Clinton Paving and Brick	Clinton	9	14N	9W	2nd
D_V-36-X2	5.6 to 8.2	Clinton Coal Mine Branches	Vigo County, Indiana	Miami No. 8	Fayette	6	13N	9W	2nd
D_V-38-1	171.7 to 172.0	Otter Creek Jct to Str Line Jct	Vigo County, Indiana	Otter Creek Jct. (Detail Map)	Otter Creek	30	13N	8W	2nd
D_V-38-2	172.0 to 173.0	Otter Creek Jct to Str Line Jct	Vigo County, Indiana		Otter Creek	25	13N	9W	2nd
D_V-38-3	173.0 to 174.0	Otter Creek Jct to Str Line Jct	Vigo County, Indiana	North Terre Haute, IN	Otter Creek / Harrison	36	13N	9W	2nd
D_V-38-4	174.0 to 175.0	Otter Creek Jct to Str Line Jct	Vigo County, Indiana		Harrison	2	12N	9W	2nd
D_V-38-5	175.0 to 176.0	Otter Creek Jct to Str Line Jct	Vigo County, Indiana	Terre Haute, IN	Harrison	11	12N	9W	2nd
F_V-38-6	176.0 to 177.0	Otter Creek Jct to Str Line Jct	Vigo County, Indiana	Haley Tower	Harrison	15	12N	9W	2nd
F_V-38-7	177.0 to 178.0	Otter Creek Jct to Str Line Jct	Vigo County, Indiana	Terre Haute, IN Union Station	Harrison	22	12N	9W	2nd
F_V-38-8	178.0 to 179.0	Otter Creek Jct to Str Line Jct	Vigo County, Indiana	Terre Haute, IN	Harrison	27	12N	9W	2nd
F_V-38-9	179.0 to 180.0	Otter Creek Jct to Str Line Jct	Vigo County, Indiana	Terre Haute, IN	Harrison	34	12N	9W	2nd
F_V-38-10	180.0 to 181.0	Otter Creek Jct to Str Line Jct	Vigo County, Indiana	Baker Yard	Harrison / Honey Cr	2	11N	9W	2nd
F_V-38-11	181.0 to 182.0	Otter Creek Jct to Str Line Jct	Vigo County, Indiana	CTH&SE RR	Honey Creek	11	11N	9W	2nd
F_V-38-12	182.0 to 183.0	Otter Creek Jct to Str Line Jct	Vigo County, Indiana	Springhill Crossing	Honey Creek	14	11N	9W	2nd
F_V-38-13	183.0 to 187.0	Otter Creek Jct to Str Line Jct	Vigo County, Indiana	Young, IN (Detail Map)	Honey Creek / Linton	26	11N	9W	2nd
F_V-38-14	187.0 to 191.0	Otter Creek Jct to Str Line Jct	Vigo County, Indiana	Pimento, IN (Detail Map)	Linton	14	10N	9W	2nd
F_V-38-15	191.0 to 195.0	Otter Creek Jct to Str Line Jct	Vigo / Sullivan County, Indiana	Seifert, IN	Linton / Curry	2	9N	9W	2nd
F_V-38-16	195.0 to 199.0	Otter Creek Jct to Str Line Jct	Sullivan County, Indiana	Standard, IN (Detail Map)	Curry / Hamilton	26	9N	9W	2nd
F_V-38-17	199.0 to 203.0	Otter Creek Jct to Str Line Jct	Sullivan County, Indiana	Union Mine Spur	Hamilton	15	8N	9W	2nd
F_V-38-18	203.0 to 207.0	Otter Creek Jct to Str Line Jct	Sullivan County, Indiana	Sullivan, IN	Hamilton	3	7N	9W	2nd
F_V-38-19	207.0 to 211.0	Otter Creek Jct to Str Line Jct	Sullivan County, Indiana	Paxton, IN	Hamilton / Haddon	27	7N	9W	2nd
F_V-38-20	211.0 to 215.0	Otter Creek Jct to Str Line Jct	Sullivan County, Indiana	Carlisle Mine (Detail Map)	Haddon	3	6N	9W	2nd
F_V-38-21	215.0 to 219.0	Otter Creek Jct to Str Line Jct	Sullivan / Knox County, Indiana	Bellevue Coal Co (Detail Map)	Haddon / Busseron	33	6N	9W	2nd
F_V-38-22	219.0 to 223.0	Otter Creek Jct to Str Line Jct	Knox County, Indiana	Oaktown, IN (Detail Map)	Busseron	8	5N	9W	2nd
F_V-38-23	223.0 to 227.0	Otter Creek Jct to Str Line Jct	Knox County, Indiana	Emison, IN (Detail Map)	Busseron				
F_V-38-24	227.0 to 231.0	Otter Creek Jct to Str Line Jct	Knox County, Indiana	Smith, IN (Detail Map)	Busseron / Washing	26	4N	10W	2nd
F_V-38-25	231.0 to 235.0	Otter Creek Jct to Str Line Jct	Knox County, Indiana	Vincennes, IN	Vincennes				
F_V-38-26	235.0 to 239.0	Otter Creek Jct to Str Line Jct	Knox County, Indiana	Vincennes, IN	Vincennes / Johnson				
F_V-38-27	239.0 to 243.0	Otter Creek Jct to Str Line Jct	Knox County, Indiana	Purcell, IN (Detail Map)	Johnson	28	2N	10W	2nd
F_V-38-28	243.0 to 247.0	Otter Creek Jct to Str Line Jct	Knox / Gibson County, Indiana	Cantalope, IN (Detail Map)	Johnson / Decker / V	4	1N	10W	2nd
F_V-38-29	247.0 to 251.0	Otter Creek Jct to Str Line Jct	Knox / Gibson County, Indiana	Hazleton, IN	Decker / White River				
F_V-38-30	251.0 to 255.0	Otter Creek Jct to Str Line Jct	Gibson County, Indiana	Miller, IN	White River	18	1S	10W	2nd
F_V-38-31	255.0 to 259.0	Otter Creek Jct to Str Line Jct	Gibson County, Indiana	Patoka, IN	White River / Patoka	36	1S	11W	2nd
F_V-38-32	259.0 to 263.0	Otter Creek Jct to Str Line Jct	Gibson County, Indiana	Princeton, IN	Patoka	24	2S	11W	2nd
F_V-38-33	263.0 to 267.0	Otter Creek Jct to Str Line Jct	Gibson County, Indiana	Fort Branch, IN	Patoka / Union	12	3S	11W	2nd
F_V-38-34	267.0 to 271.0	Otter Creek Jct to Str Line Jct	Gibson County, Indiana	Haubstadt, IN (Detail Map)	Union / Johnson	31	3S	10W	2nd
F_V-38-35	271.0 to 275.0	Otter Creek Jct to Str Line Jct	Gibson / Vanderburgh County	Stacer, IN (Detail Map)	Johnson / Scott	19	4S	10W	2nd
F_V-38-36	275.0 to 279.0	Otter Creek Jct to Str Line Jct	Vanderburgh County, Indiana	Ingle, IN (Detail Map)	Scott / Center	8	5S	10W	2nd
F_V-38-37	279.0 to 283.0	Otter Creek Jct to Str Line Jct	Vanderburgh County, Indiana	Straight Line Jct	Center	33	5S	10W	2nd
F_V-38-S-T15	192.0	Otter Creek Jct to Str Line Jct	Vigo / Sullivan County, Indiana	Seifert, IN (Station Map)	Linton / Curry	35	10N	9W	2nd
F_V-38-S-T15A	193.0	Otter Creek Jct to Str Line Jct	Sullivan County, Indiana	Farmersburg, IN (Station Map)	Curry	2	9N	9W	2nd
F_V-38-S-T16	198.3	Otter Creek Jct to Str Line Jct	Sullivan County, Indiana	Shelburn, IN (Station Map)	Curry / Hamilton	34	9N	9W	2nd
F_V-38-S-T18	204.0	Otter Creek Jct to Str Line Jct	Sullivan County, Indiana	Sullivan, IN (Station Map)	Hamilton		8N	9W	2nd

Chicago and Eastern Illinois Railroad
1915 Valuation Maps

Indiana									
F_V-38-S-T19		Otter Creek Jct to Str Line Jct	Sullivan County, Indiana	Paxton, IN (Station Map)	Haddon	27 7N	9W	2nd	
F_V-38-S-T19A	1.0	Otter Creek Jct to Str Line Jct	Sullivan County, Indiana	Paxton Mine (Station Map)	Haddon	26 7N	9W	2nd	
F_V-38-S-T25	234.0	Otter Creek Jct to Str Line Jct	Knox County, Indiana	Vincennes, IN (Station Map)	Vincennes	Not PLSS			
F_V-38-S-T25A	235.0	Otter Creek Jct to Str Line Jct	Knox County, Indiana	Vincennes, IN (Station Map)	Vincennes	Not PLSS			
F_V-38-S-T25B	236.0	Otter Creek Jct to Str Line Jct	Knox County, Indiana	Vincennes, IN (Station Map)	Vincennes	Not PLSS			
F_V-38-S-T28	247.0	Otter Creek Jct to Str Line Jct	Knox / Gibson County, Indiana	Decker, IN (Station Map)	Johnson / Decker /	16 1N	10W	2nd	
F_V-38-S-T29	249.0	Otter Creek Jct to Str Line Jct	Gibson County, Indiana	Hazleton, IN (Station Map)	White River	Not PLSS			
F_V-38-S-T31	255.0	Otter Creek Jct to Str Line Jct	Gibson County, Indiana	Patoka, IN (Station Map)	White River	25 1S	11W	2nd	
F_V-38-S-T32	259.0	Otter Creek Jct to Str Line Jct	Gibson County, Indiana	Princeton, IN (Station Map)	Patoka	12 2S	11W	2nd	
F_V-38-S-T32A	260.0	Otter Creek Jct to Str Line Jct	Gibson County, Indiana	Princeton, IN (Station Map)	Patoka	7 2S	10W	2nd	
F_V-38-S-T33	267.0	Otter Creek Jct to Str Line Jct	Gibson County, Indiana	Fort Branch, IN (Station Map)	Union	13 3S	11W	2nd	
F_V-38-X1		Otter Creek Jct to Str Line Jct	Clay County, Indiana	Right of Way and Track Map Clay Cty		Index			
F_V-38-X6	174.5 to 177.5	Otter Creek Jct to Str Line Jct	Vigo County, Indiana	Terre Haute, IN	Harrison	15 12N	9W	2nd	
F_V-38-X16	1.0	Otter Creek Jct to Str Line Jct	Sullivan County, Indiana	Reliance Mine	Hamilton / Curry	3 8N	9W	2nd	
F_V-40-1	265.3 to 269.0	Mt. Vernon, IN branch	Gibson County, Indiana	Junction Wye	Union / Montgomery	10 3S	11W	2nd	
F_V-40-10	301.0 to 302.5	Mt. Vernon, IN branch	Posey Co, Indiana	Mt. Vernon, IN	Black	6 7S	13W	2nd	
F_V-40-2	269.0 to 273.0	Mt. Vernon, IN branch	Gibson County, Indiana	Owensville, IN - detail map	Montgomery	7 3S	11W	2nd	
F_V-40-3	273.0 to 277.0	Mt. Vernon, IN branch	Gibson / Posey County, Indiana	Knowles, IN - detail map	Montgomery / Smith	25 3S	12W	2nd	
F_V-40-4	277.0 to 281.0	Mt. Vernon, IN branch	Posey Co, Indiana	Cynthiana, IN - detail map	Smith / Robb	10 4S	12W	2nd	
F_V-40-5	281.0 to 285.0	Mt. Vernon, IN branch	Posey Co, Indiana	Poseyville, IN - detail map	Robb / Center	29 4S	12W	2nd	
F_V-40-6	285.0 to 289.0	Mt. Vernon, IN branch	Posey Co, Indiana	Wadesville, IN - detail map	Center	8 5S	12W	2nd	
F_V-40-7	289.0 to 293.0	Mt. Vernon, IN branch	Posey Co, Indiana	Oliver, IN - detail map	Center / Lynn	35 5S	13W	2nd	
F_V-40-8	293.0 to 297.0	Mt. Vernon, IN branch	Posey Co, Indiana	Solitude, IN - detail map	Lynn / Black	8 6S	13W	2nd	
F_V-40-9	297.0 to 301.0	Mt. Vernon, IN branch	Posey Co, Indiana	Erwin, IN - detail map	Black	30 6S	13W	2nd	
F_V-40-S-T10	302.5	Mt. Vernon, IN branch	Posey Co, Indiana	Mt. Vernon, IN - detail map	Black	8 7S	13W	2nd	
F_V-49-1	285.5 to 286.4	Evansville Union Track	Vanderburgh County, Indiana	Evansville Trunk Co.	Pigeon	20 6S	10W	2nd	
F_V-49-2	286.4 to 287.5	Evansville Union Track	Vanderburgh County, Indiana	L&N depot	Pigeon	30 6S	10W	2nd	
F_V-41-1	283.0 to 284.0	Evansville, IN	Vanderburgh County, Indiana	Straight Line Jct south	Center / Knight	9 6S	10W	2nd	
F_V-41-2	284.0 to 284.8	Evansville, IN	Vanderburgh County, Indiana	N. Belt Line Yard	Knight / Pigeon	16 6S	10W	2nd	
F_V-41-3	284.8 to 285.6	Evansville, IN	Vanderburgh County, Indiana	Belt Line Yard,	Pigeon	20 6S	10W	2nd	
F_V-41-4	285.6 to 286.5	Evansville, IN	Vanderburgh County, Indiana	Union Station	Pigeon	29 6S	10W	2nd	
E V 42-1	172 to 176	Coal Bluff Coal Mine Branches	Vigo / Clay / Parke County, Indiana	Glen No. 2, Brazil Block No 8	Nevins / Dick Johnson	9 13N	7W	2nd	
E V 42-2	175 to 178	Coal Bluff Coal Mine Branches	Clay / Parke, Co	Brazil Block, 9, 12, Superior 2 & 5	Dick Johnson / Racco	34 14N	7W	2nd	
D_V-43-1	171.6 to 174.0	Otter Creek Jct to Brazil	Vigo County, Indiana	Otter Creek Jct.	Otter Creek	30 13N	8W	2nd	
D_V-43-2	174.0 to 178.0	Otter Creek Jct to Brazil	Vigo County, Indiana	Burnette, IN - CCC&St. L xing	Otter Creek / Nevins	26 13N	8W	2nd	
D_V-43-3	178.0 to 182.0	Otter Creek Jct to Brazil	Vigo / Clay County, Indiana	Domestic Switch - detail map	Nevins / Dick Johnson	29 13N	7W	2nd	
D_V-43-S-T4	184.0	Otter Creek Jct to Brazil	Clay County, Indiana	Brazil, Indiana - detail map	Dick Johnson / Brazil	13N	7W	2nd	
D_V-43-X2	0.0 to 2.0	Otter Creek Jct to Brazil	Vigo County, Indiana	Ehrmandale, IN	Nevins	36 13N	8W	2nd	
D_V-43-X3	0.0 to 1.7	Otter Creek Jct to Brazil	Clay County, Indiana	Collins No. 3 mine	Dick Johnson	33 13N	7E	2nd	
F_V-44-1	192.3 to 195.4	Farmersburg Coal branch	Vigo / Sullivan County, Indiana	Bruillet Mine	Linton / Pierson/ Jac	6 9N	8W	2nd	
F_V-44-ST-1	195.0	Farmersburg Coal branch	Sullivan County, Indiana	Bruillet Mine	Jackson	5 9N	8W	2nd	
F_V-45-1	197.0 to 201.0	Sullivan County Coal Branch	Sullivan County, Indiana	Standard, IN & C. TH & SE xing	Curry / Hamilton	36 9N	9W	2nd	
F_V-45-2	201.5 to 204.5	Sullivan County Coal Branch	Sullivan County, Indiana	Jackson Hill Mine #2 & #3	Jackson	4 8N	8W	2nd	
F_V-45-3	204.5 to 208.0	Sullivan County Coal Branch	Sullivan / Clay County, Indiana	Warren Mine	Jackson / Lewis	35 9N	8W	2nd	
F_V-45-S-T2	204.0	Sullivan County Coal Branch	Sullivan County, Indiana	Hymera, IN detail map	Jackson	33 9N	8W	2nd	

Chicago and Eastern Illinois Railroad
1915 Valuation Maps

Indiana									
F_V-45-S-T3	204.5	Sullivan County Coal Branch	Sullivan County, Indiana	Warren Mine detail map	Hamilton	3	8N	8W	2nd
F_V-45-S-TX1	199.0 to 202.5	Sullivan County Coal Branch	Sullivan County, Indiana	Kolsem Mine detail map	Hamilton	18	8N	8W	2nd
F_V-45-X1	199.0 to 202.5	Sullivan County Coal Branch	Sullivan County, Indiana	Kolsem Mine	Curry / Hamilton	12	8N	9W	2nd
F_V-46-1	234 to 235	Vincennes, IN - River line	Knox County, Indiana	Vincennes Distilling	Vincennes				
F_V-47-1	236.0 to 238.0	Vincennes, IN - Branch line	Knox County, Indiana	Murphy Distilling Co	Vincennes	3	N	10W	2nd
F_V-48-1	285.0	Evansville Belt	Vanderburgh County, Indiana	Beech & Fuller Basket Factory	Knight / Pigeon	6	S	10W	2nd
F_V-48-2	285.0 to 286.0	Evansville Belt	Vanderburgh County, Indiana	Karges Wagon Co.	Pigeon	20	6S	10W	2nd
F_V-48-3	286.0 to 287.0	Evansville Belt	Vanderburgh County, Indiana	Englehart Bros Flour Mill	Pigeon	19	6S	10W	2nd
F_V-48-4	287.0 to 287.6	Evansville Belt (IC Conn)	Vanderburgh County, Indiana	Union Elevator	Pigeon	24	6S	11W	2nd
F_V-48-5	287.6 to 288.6	Evansville Belt (L&N Conn)	Vanderburgh County, Indiana	Globe Paper	Pigeon	6	S	11W	2nd
F_V-48-5A	287.6 to 288.6	Evansville Belt (L&N Conn)	Vanderburgh County, Indiana		Pigeon	Deed Index			

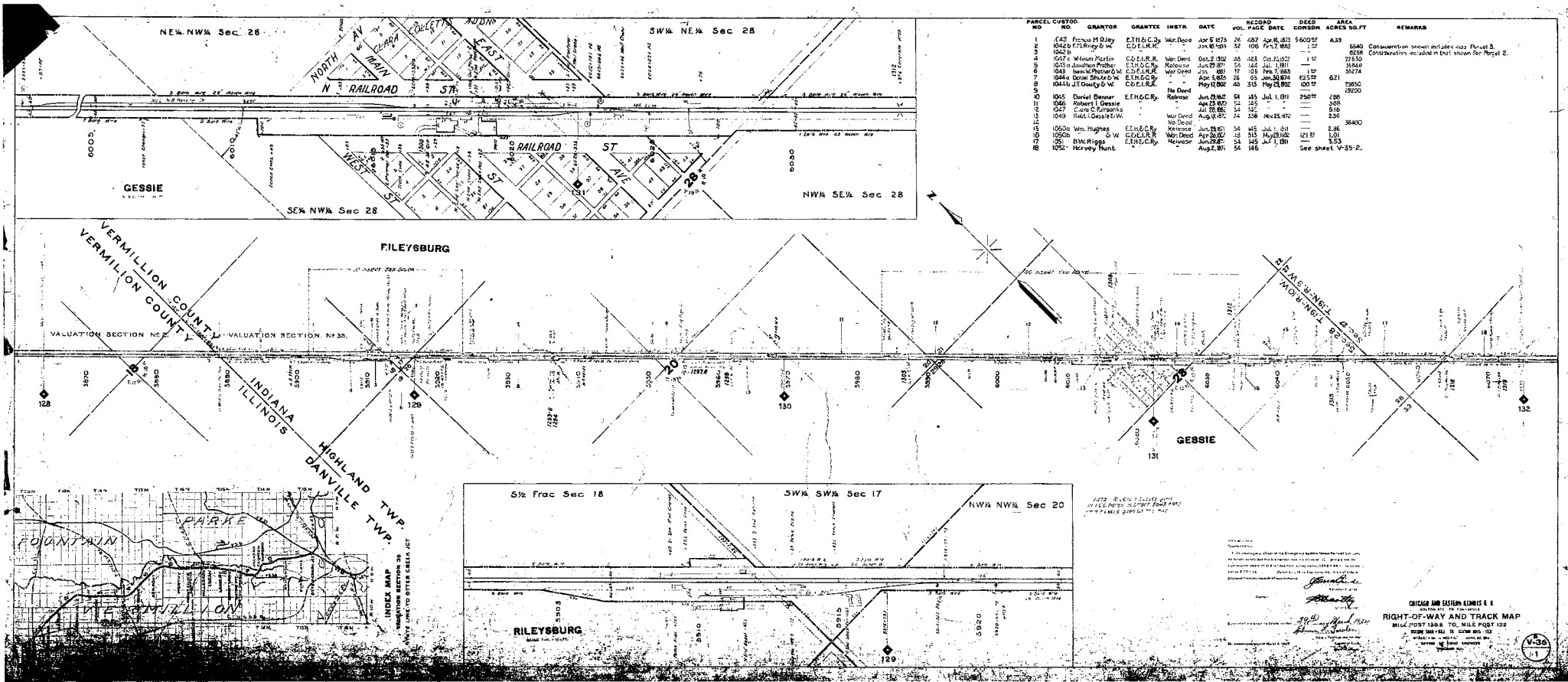


PANEL	CURTID	N.A.	NO.	GRANTOR	GRANTEE	INSTR.	EAT.	RECORD	DEED	APCA	REMARKS
								VOL. PAGE DATE	CONV.	ACRES TO FT.	
D-1				W.D. Jones	W.D.	1800		41 142 1800	1/4 00	3.17	
D-2				W.D. Jones	W.D.	1800		41 142 1800	1/4 00	3.17	
D-3				W.D. Jones	W.D.	1800		41 142 1800	1/4 00	3.17	
D-4				W.D. Jones	W.D.	1800		41 142 1800	1/4 00	3.17	
D-5				W.D. Jones	W.D.	1800		41 142 1800	1/4 00	3.17	
D-6				W.D. Jones	W.D.	1800		41 142 1800	1/4 00	3.17	
D-7				W.D. Jones	W.D.	1800		41 142 1800	1/4 00	3.17	
D-8				W.D. Jones	W.D.	1800		41 142 1800	1/4 00	3.17	
D-9				W.D. Jones	W.D.	1800		41 142 1800	1/4 00	3.17	
D-10				W.D. Jones	W.D.	1800		41 142 1800	1/4 00	3.17	

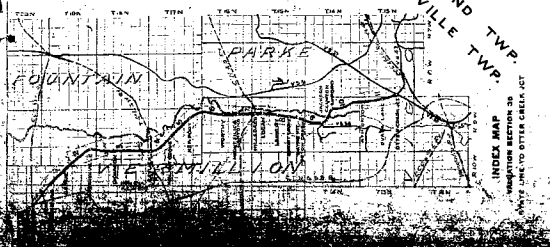
VERMILLION COUNTY, IND.
CLINTON TWP.
T. 14 N-R. 9 W.

CHAS. AND SISTER ENGINEERS & ARCHITECTS
RIGHT-OF-WAY AND TRACK MAP
MILE POST 1 TO MILE POST 2

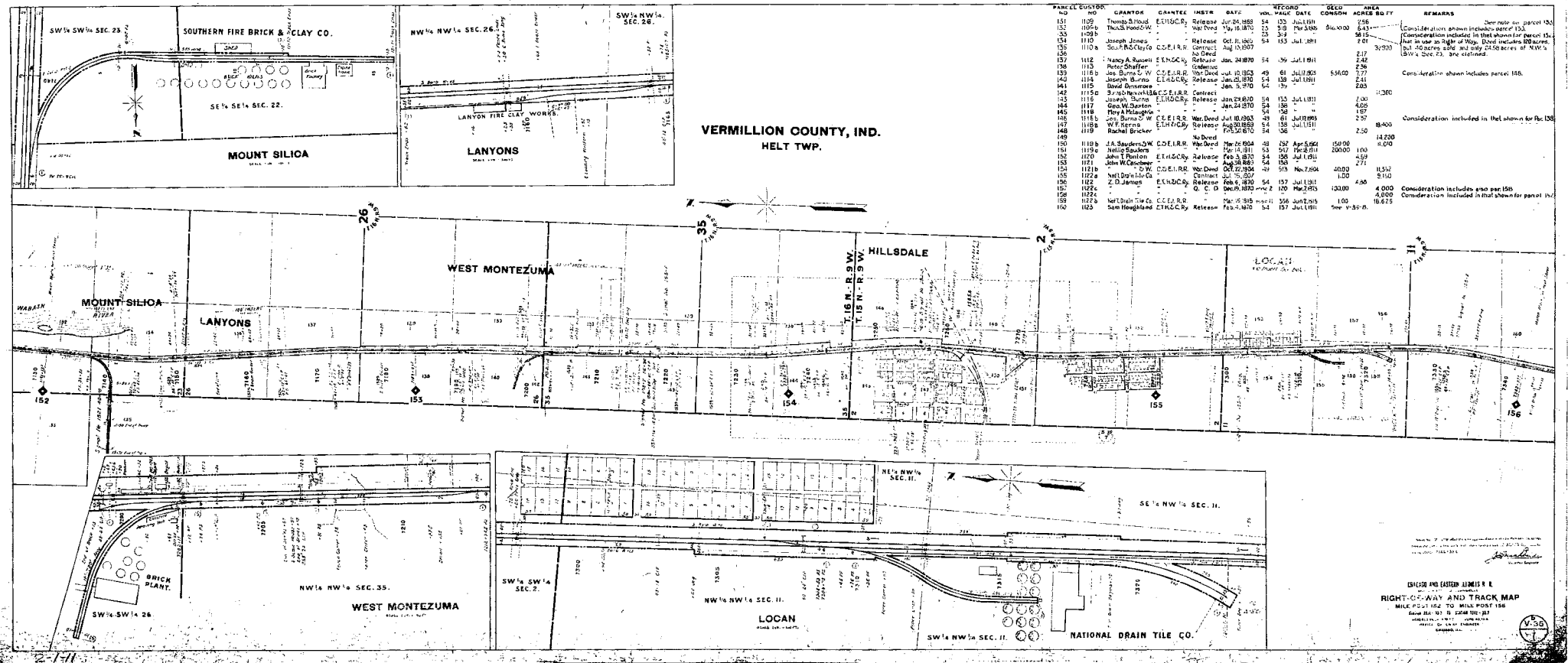




PARCEL NO.	CUSTOMER NO.	GRANTOR	GRANTEE	INSTR.	DATE	RECORD VOL.	PAGE	DATE	DEED CORSDN.	ACRES	SQ. FT.	REMARKS
1	643	Fred H. Daley	E.H.C.R.	Wd. Deed	Apr 5 1872	27	227	Apr 18 1883	96094	4.39	6540	Conservation shown includes also Parcel 8.
2	1042	F. H. Daley & Wm. C. Gessie	E.H.C.R.	Wd. Deed	Jun 9 1881	57	106	Feb 7 1883	112	2638	6538	Conservation included in that shown for Parcel 2.
3	1043	Wm. C. Gessie	E.H.C.R.	Wd. Deed	Oct 2 1882	55	323	Oct 10 1882	112	2735	6539	
4	1044	Wm. C. Gessie	E.H.C.R.	Wd. Deed	Jun 29 1881	55	104	Jul 1 1881	112	3840	6540	
5	1045	Wm. C. Gessie	E.H.C.R.	Wd. Deed	Jul 1 1881	55	105	Jul 1 1881	112	3840	6540	
6	1046	Wm. C. Gessie	E.H.C.R.	Wd. Deed	Apr 1 1882	55	106	Apr 1 1882	112	621	2955	
7	1047	Wm. C. Gessie	E.H.C.R.	Wd. Deed	May 1 1882	55	107	May 1 1882	112	3900	6540	
8	1048	Wm. C. Gessie	E.H.C.R.	Wd. Deed	Jun 1 1881	54	145	Jul 1 1881	2507	208	368	
9	1049	Wm. C. Gessie	E.H.C.R.	Wd. Deed	Jul 1 1881	54	146	Jul 1 1881	2507	368	368	
10	1050	Wm. C. Gessie	E.H.C.R.	Wd. Deed	Aug 17 1872	24	308	Nov 25 1872	112	810	3100	
11	1051	Wm. C. Gessie	E.H.C.R.	Wd. Deed	Jun 29 1881	54	145	Jul 1 1881	2507	208	368	
12	1052	Wm. C. Gessie	E.H.C.R.	Wd. Deed	Jul 1 1881	54	146	Jul 1 1881	2507	368	368	
13	1053	Wm. C. Gessie	E.H.C.R.	Wd. Deed	Aug 17 1872	24	308	Nov 25 1872	112	810	3100	
14	1054	Wm. C. Gessie	E.H.C.R.	Wd. Deed	Jun 29 1881	54	145	Jul 1 1881	2507	208	368	
15	1055	Wm. C. Gessie	E.H.C.R.	Wd. Deed	Jul 1 1881	54	146	Jul 1 1881	2507	368	368	
16	1056	Wm. C. Gessie	E.H.C.R.	Wd. Deed	Aug 17 1872	24	308	Nov 25 1872	112	810	3100	
17	1057	Wm. C. Gessie	E.H.C.R.	Wd. Deed	Jun 29 1881	54	145	Jul 1 1881	2507	208	368	
18	1058	Wm. C. Gessie	E.H.C.R.	Wd. Deed	Jul 1 1881	54	146	Jul 1 1881	2507	368	368	

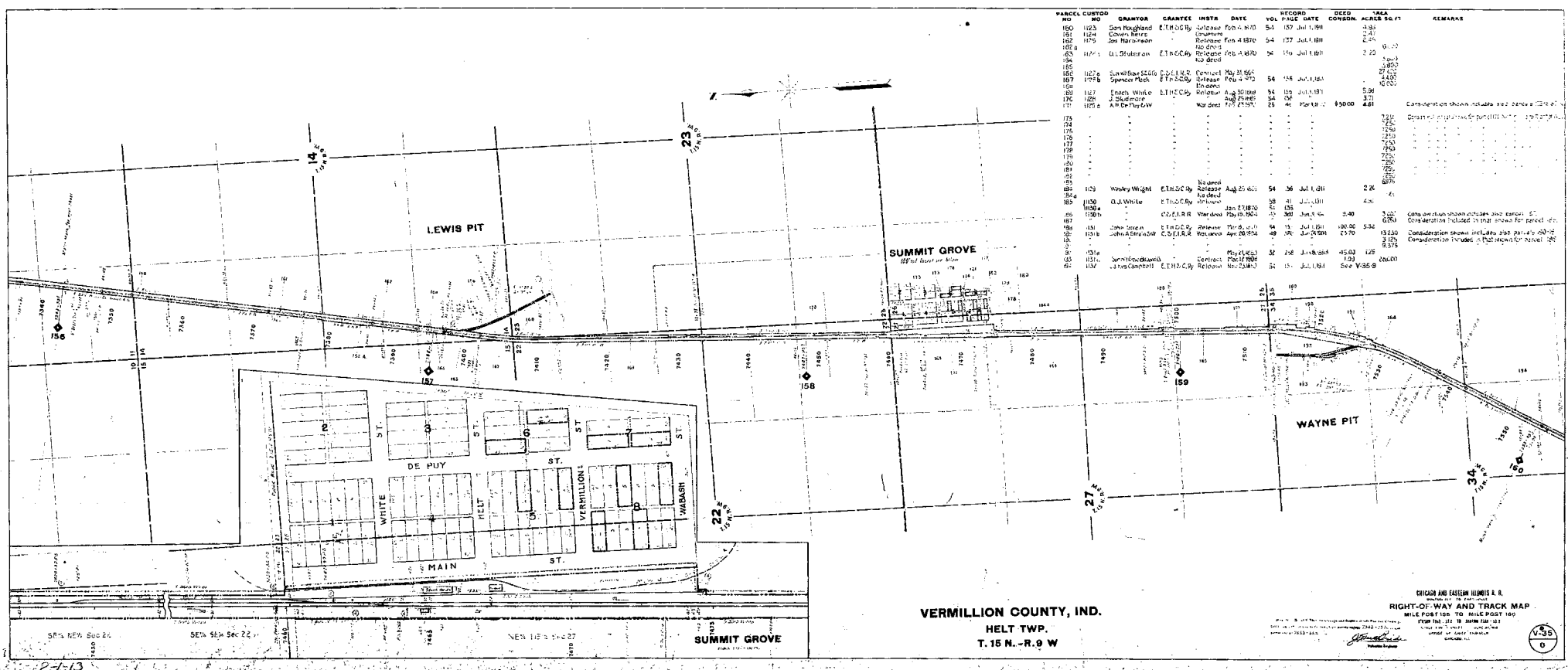


CHICAGO AND EASTERN LINES I & II
 RIGHT-OF-WAY AND TRACK MAP
 MILE POST 128.6 TO MILE POST 129
 VERMILLION COUNTY, ILLINOIS
 V-36
 1



PANEL	CUSTOMER NO.	GRANTOR	GRANTEE	INSTR.	DATE	ACRES	DEED DATE	CONV. DATE	ACRES	AREA SQ. FT.	REMARKS
151	1109	Thomas Stout	E.H.S.C.B.	Release	Jul 24, 1883	54	153	Jul 1, 1911	54	3,672	See note on parcel 150
152	1056	Thos. Hood	W. B. W.	W. B. W.	1/16, 1870	15	519	1/16, 1870	15	972	Consideration shown includes parcel 153
153	1109	Joseph Jones	C.S.E.I.R.R.	Contract	Oct 11, 1885	54	153	Jul 1, 1911	54	3,672	Consideration included in that shown for parcel 151. Part in use as right of Way. Deed includes 100 acres. Balance of 54 acres sold and only 21.50 acres of NW 1/4 SW 1/4 Sec. 23, are defined.
154	1110	Scott R. H. W.	C.S.E.I.R.R.	Contract	Jan 24, 1870	54	59	Jul 1, 1911	54	3,672	
155	1112	Nancy A. Russell	E.H.S.C.B.	W. B. W.	Jan 24, 1870	54	59	Jul 1, 1911	54	3,672	
156	1110	Perce Shaffer	W. B. W.	W. B. W.	Jan 10, 1853	49	61	Jul 1, 1911	49	3,123	
157	1118	John Burns	C.S.E.I.R.R.	W. B. W.	Jan 2, 1870	54	153	Jul 1, 1911	54	3,672	Consideration shown includes parcel 155.
158	1114	Joseph Burns	E.H.S.C.B.	Release	Jan 2, 1870	54	153	Jul 1, 1911	54	3,672	
159	1115	David Dimes	W. B. W.	W. B. W.	Jan 3, 1870	54	153	Jul 1, 1911	54	3,672	
160	1115	Joseph Burns	E.H.S.C.B.	Contract	Jan 24, 1870	54	153	Jul 1, 1911	54	3,672	
161	1116	Joseph Burns	E.H.S.C.B.	Release	Jan 24, 1870	54	153	Jul 1, 1911	54	3,672	
162	1117	Geo. W. Denton	W. B. W.	W. B. W.	Jan 24, 1870	54	153	Jul 1, 1911	54	3,672	
163	1118	Thos. Hood	E.H.S.C.B.	Release	Jan 24, 1870	54	153	Jul 1, 1911	54	3,672	
164	1117	Geo. W. Denton	W. B. W.	W. B. W.	Jan 24, 1870	54	153	Jul 1, 1911	54	3,672	
165	1118	John Burns	C.S.E.I.R.R.	W. B. W.	Jul 10, 1853	49	61	Jul 1, 1911	49	3,123	Consideration included in that shown for parcel 155.
166	1118	W. B. W.	E.H.S.C.B.	Release	Jan 24, 1870	54	153	Jul 1, 1911	54	3,672	
167	1119	Rachel Bricker	W. B. W.	W. B. W.	Jan 24, 1870	54	153	Jul 1, 1911	54	3,672	
168	1119	Rachel Bricker	W. B. W.	W. B. W.	Jan 24, 1870	54	153	Jul 1, 1911	54	3,672	
169	1119	J. A. Saunders	C.S.E.I.R.R.	W. B. W.	Mar 26, 1864	48	152	Apr 5, 1864	48	3,110	
170	1120	W. B. W.	E.H.S.C.B.	Release	Feb 3, 1870	54	153	Jul 1, 1911	54	3,672	
171	1120	John E. Denton	E.H.S.C.B.	Release	Feb 3, 1870	54	153	Jul 1, 1911	54	3,672	
172	1121	John W. Denton	C.S.E.I.R.R.	W. B. W.	Aug 28, 1864	54	153	Jul 1, 1911	54	3,672	
173	1121	John W. Denton	C.S.E.I.R.R.	W. B. W.	Aug 28, 1864	54	153	Jul 1, 1911	54	3,672	
174	1122	Natl. Drain Tile Co.	W. B. W.	W. B. W.	Jul 15, 1907	54	153	Jul 1, 1911	54	3,672	
175	1123	Z. D. Jenson	E.H.S.C.B.	Release	Feb 3, 1870	54	153	Jul 1, 1911	54	3,672	
176	1124	Z. D. Jenson	E.H.S.C.B.	Release	Feb 3, 1870	54	153	Jul 1, 1911	54	3,672	
177	1124	Z. D. Jenson	E.H.S.C.B.	Release	Feb 3, 1870	54	153	Jul 1, 1911	54	3,672	
178	1124	Z. D. Jenson	E.H.S.C.B.	Release	Feb 3, 1870	54	153	Jul 1, 1911	54	3,672	
179	1124	Z. D. Jenson	E.H.S.C.B.	Release	Feb 3, 1870	54	153	Jul 1, 1911	54	3,672	
180	1124	Z. D. Jenson	E.H.S.C.B.	Release	Feb 3, 1870	54	153	Jul 1, 1911	54	3,672	
181	1124	Z. D. Jenson	E.H.S.C.B.	Release	Feb 3, 1870	54	153	Jul 1, 1911	54	3,672	
182	1124	Z. D. Jenson	E.H.S.C.B.	Release	Feb 3, 1870	54	153	Jul 1, 1911	54	3,672	
183	1124	Z. D. Jenson	E.H.S.C.B.	Release	Feb 3, 1870	54	153	Jul 1, 1911	54	3,672	
184	1124	Z. D. Jenson	E.H.S.C.B.	Release	Feb 3, 1870	54	153	Jul 1, 1911	54	3,672	
185	1124	Z. D. Jenson	E.H.S.C.B.	Release	Feb 3, 1870	54	153	Jul 1, 1911	54	3,672	
186	1124	Z. D. Jenson	E.H.S.C.B.	Release	Feb 3, 1870	54	153	Jul 1, 1911	54	3,672	
187	1124	Z. D. Jenson	E.H.S.C.B.	Release	Feb 3, 1870	54	153	Jul 1, 1911	54	3,672	
188	1124	Z. D. Jenson	E.H.S.C.B.	Release	Feb 3, 1870	54	153	Jul 1, 1911	54	3,672	
189	1124	Z. D. Jenson	E.H.S.C.B.	Release	Feb 3, 1870	54	153	Jul 1, 1911	54	3,672	
190	1124	Z. D. Jenson	E.H.S.C.B.	Release	Feb 3, 1870	54	153	Jul 1, 1911	54	3,672	

GILSON AND EASTON ALBION S. E.
 RIGHT-OF-WAY AND TRACK MAP
 MILE POST 152 TO MILE POST 156
 SHOWING THE LOCATION OF THE
 NATIONAL DRAIN TILE CO.
 VERMILION COUNTY, INDIANA
 1907

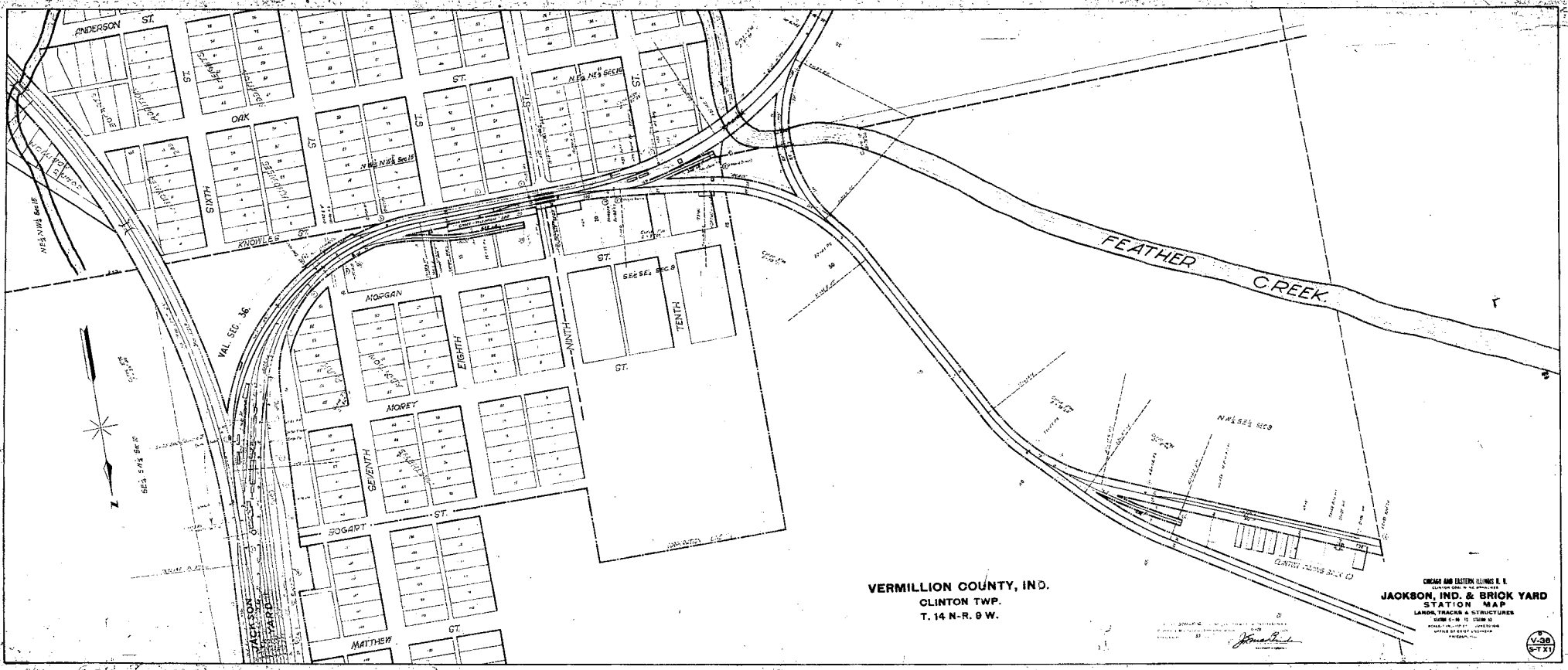


PANCL NO	CUSTOD NO	GRANTOR	GRANTEE	INSTA	DATE	VOL	PAGE	DEED CONSON.	AREA ACRES	REMARKS
160	1023	Don Roughton	E. T. McCarty	Release	Feb 4 1881	54	157	Jul 1, 1881	1.84	
161	1024	Conrad Betts	E. T. McCarty	Release	Feb 4 1881	54	157	Jul 1, 1881	2.41	
162	1025	John Harshman	E. T. McCarty	Release	Feb 4 1881	54	157	Jul 1, 1881	2.54	
163	1026	D. L. Shuler	E. T. McCarty	Release	Feb 4 1881	54	157	Jul 1, 1881	2.73	
164	1027	
165	1028	
166	1029	
167	1030	
168	1031	
169	1032	
170	1033	
171	1034	
172	1035	
173	1036	
174	1037	
175	1038	
176	1039	
177	1040	
178	1041	
179	1042	
180	1043	
181	1044	
182	1045	
183	1046	
184	1047	
185	1048	
186	1049	
187	1050	
188	1051	
189	1052	
190	1053	
191	1054	
192	1055	
193	1056	
194	1057	
195	1058	
196	1059	
197	1060	
198	1061	
199	1062	
200	1063	
201	1064	
202	1065	
203	1066	
204	1067	
205	1068	
206	1069	
207	1070	
208	1071	
209	1072	
210	1073	
211	1074	
212	1075	
213	1076	
214	1077	
215	1078	
216	1079	
217	1080	
218	1081	
219	1082	
220	1083	
221	1084	
222	1085	
223	1086	
224	1087	
225	1088	
226	1089	
227	1090	
228	1091	
229	1092	
230	1093	
231	1094	
232	1095	
233	1096	
234	1097	
235	1098	
236	1099	
237	1100	
238	1101	
239	1102	
240	1103	
241	1104	
242	1105	
243	1106	
244	1107	
245	1108	
246	1109	
247	1110	
248	1111	
249	1112	
250	1113	
251	1114	
252	1115	
253	1116	
254	1117	
255	1118	
256	1119	
257	1120	
258	1121	
259	1122	
260	1123	
261	1124	
262	1125	
263	1126	
264	1127	
265	1128	
266	1129	
267	1130	
268	1131	
269	1132	
270	1133	
271	1134	
272	1135	
273	1136	
274	1137	
275	1138	
276	1139	
277	1140	
278	1141	
279	1142	
280	1143	
281	1144	
282	1145	
283	1146	
284	1147	
285	1148	
286	1149	
287	1150	
288	1151	
289	1152	
290	1153	
291	1154	
292	1155	
293	1156	
294	1157	
295	1158	
296	1159	
297	1160	
298	1161	
299	1162	
300	1163	

2-1-13

CHICAGO AND EASTERN INDIANA R.R.
 RIGHT-OF-WAY AND TRACK MAP
 MILE POST 107 TO MILE POST 160
 T. 15 N. - R. 9 W.
 VERMILION COUNTY, IND.

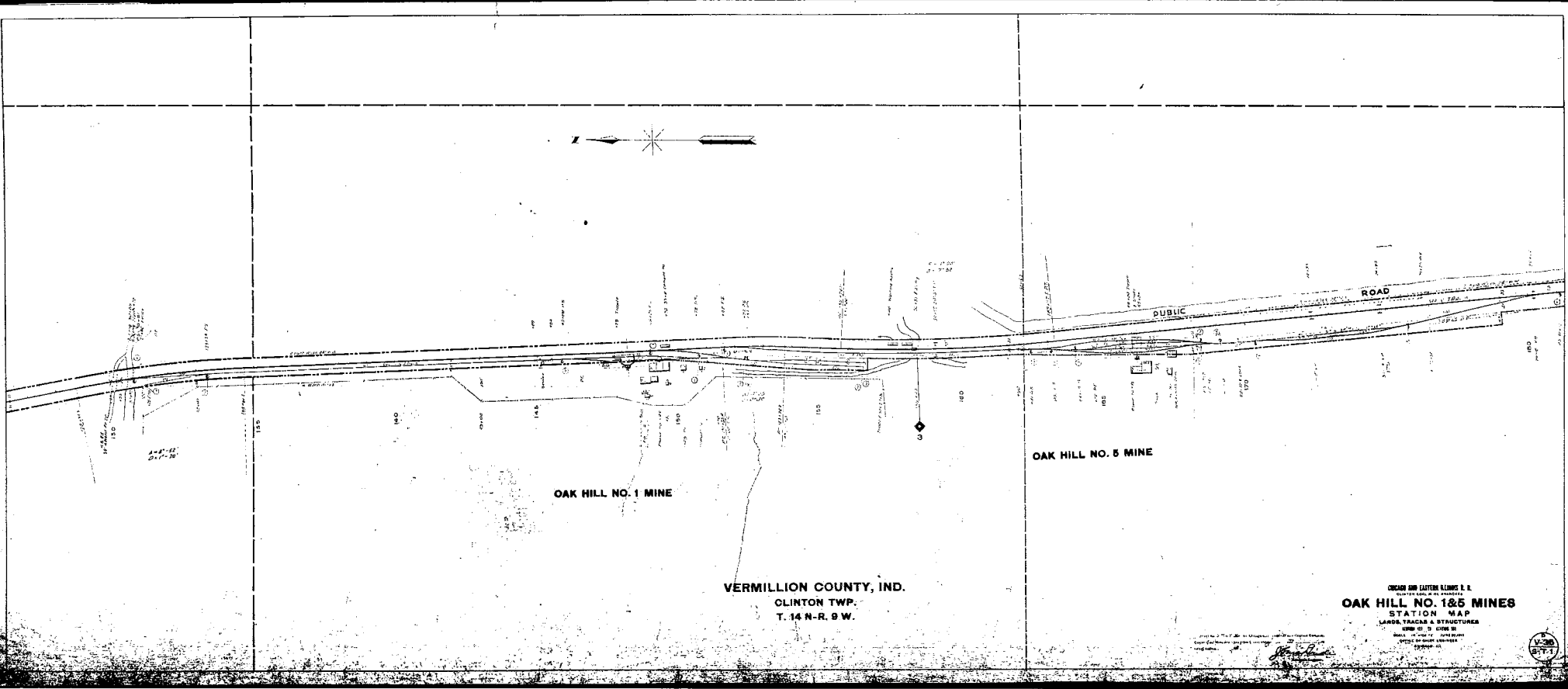
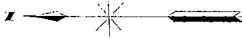




VERMILLION COUNTY, IND.
 CLINTON TWP.
 T. 14 N-R. 9 W.

CHICAGO AND EASTERN ILLINOIS R. R.
 JACKSON, IND. & BRICK YARD
 STATION MAP
 LAND, TRACKS & STRUCTURES
 SCALE 1" = 40' STATION
 DRAWN BY J. J. [Signature]
 CHECKED BY [Signature]





OAK HILL NO. 1 MINE

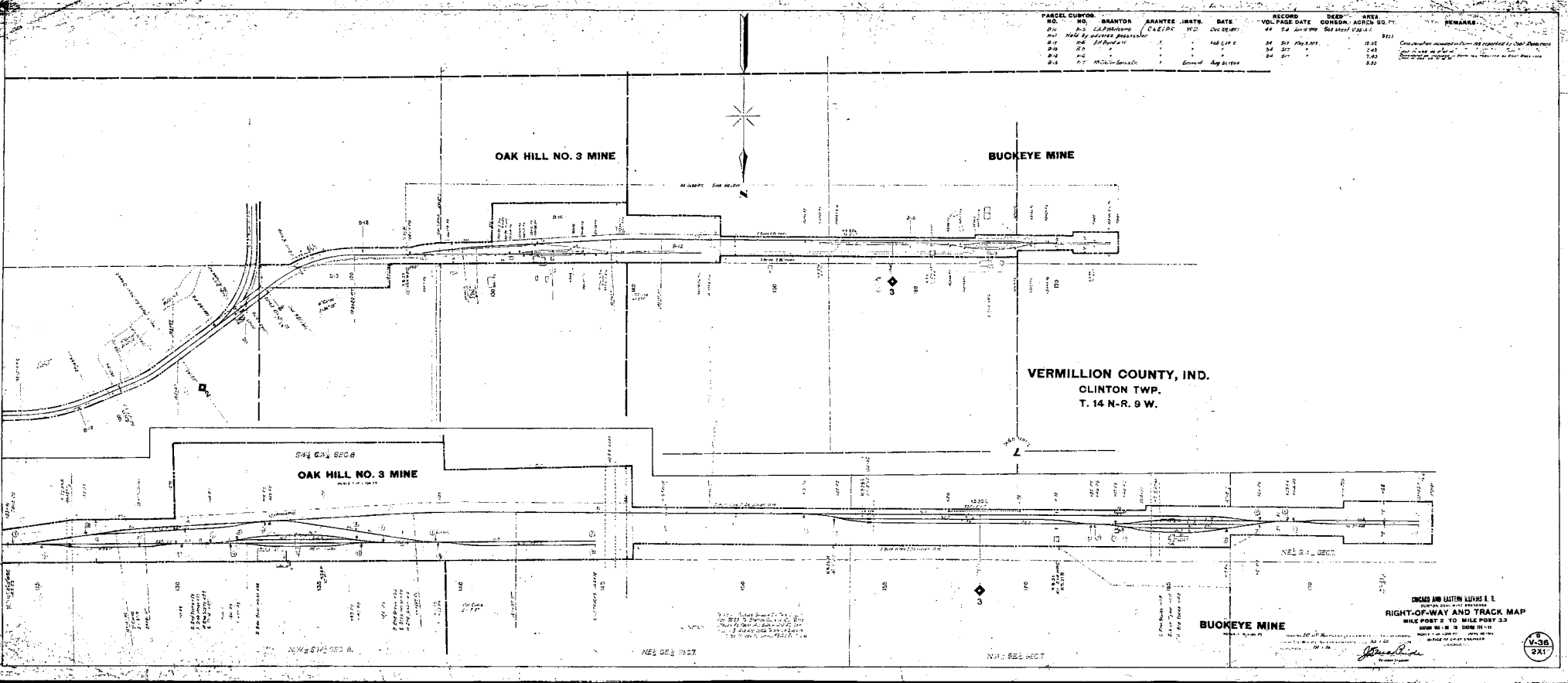
OAK HILL NO. 5 MINE

VERMILLION COUNTY, IND.
CLINTON TWP.
T. 14 N.-R. 9 W.

OSCAR AND LUTHER ELLIOTT & S.
ENGINEERS & SURVEYORS
OAK HILL NO. 1 & 5 MINES
STATION MAP
LARGE TAGS & STRUCTURES
MAY 21 1928
SCALE OF 1" = 100 FEET
1928



PARCEL CUSID.	NO.	GRANTOR	GRANTEE	INSTR.	DATE	RECORD VOL.	DEED PAGE	AREA CONSERV. ACRES	ACRES SQ. FT.	REMARKS
B-1	105	L. P. HARRIS	C. E. P. C.	100	Dec 29, 1911	44	24	100.00	100.00	
B-2	106	J. H. BROWN			1912	44	25	100.00	100.00	Discovered in 1912 and reported by J. H. Brown
B-3	107	J. H. BROWN			1912	44	26	100.00	100.00	Discovered in 1912 and reported by J. H. Brown
B-4	108	J. H. BROWN			1912	44	27	100.00	100.00	Discovered in 1912 and reported by J. H. Brown
B-5	109	J. H. BROWN			1912	44	28	100.00	100.00	Discovered in 1912 and reported by J. H. Brown

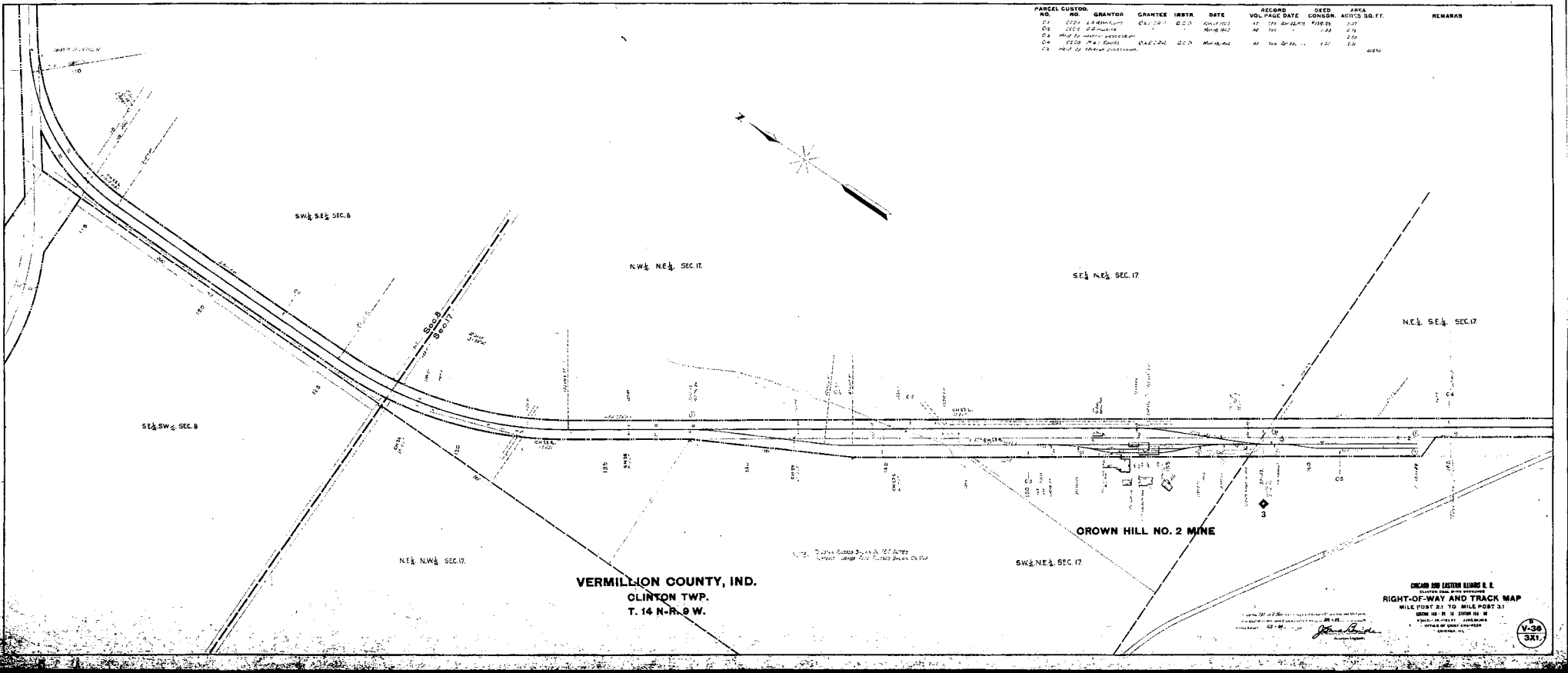


VERMILLION COUNTY, IND.
CLINTON TWP.
T. 14 N.-R. 9 W.

ONE INCH TO ONE HUNDRED FEET
RIGHT-OF-WAY AND TRACK MAP
SCALE POST 2 TO MILE POST 2.5
SHOW 1/2 IN. OF MINE IN - 1/2
MILE POST 2 TO MILE POST 2.5



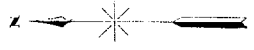
PANEL CUSTOMER NO.	GRANTOR	GRANTEE	IRBTA	DATE	RECORD VOL.	RECORD PAGE DATE	DEED CONSON.	AREA ACRES 30. FT.	REMARKS
C1	COLE & BROTHERS	COLE	COLE	1897	47	178	40.00	1.00	
C2	COLE & BROTHERS	COLE	COLE	1897	47	179	40.00	1.00	
C3	COLE & BROTHERS	COLE	COLE	1897	47	180	40.00	1.00	
C4	COLE & BROTHERS	COLE	COLE	1897	47	181	40.00	1.00	
C5	COLE & BROTHERS	COLE	COLE	1897	47	182	40.00	1.00	



CREATED FOR EASTERN ILLINOIS R. R.
RIGHT-OF-WAY AND TRACK MAP
MILE POST 21 TO MILE POST 31
SCALE: 1" = 400' HORIZONTAL
VERTICAL SCALE: 1" = 80'



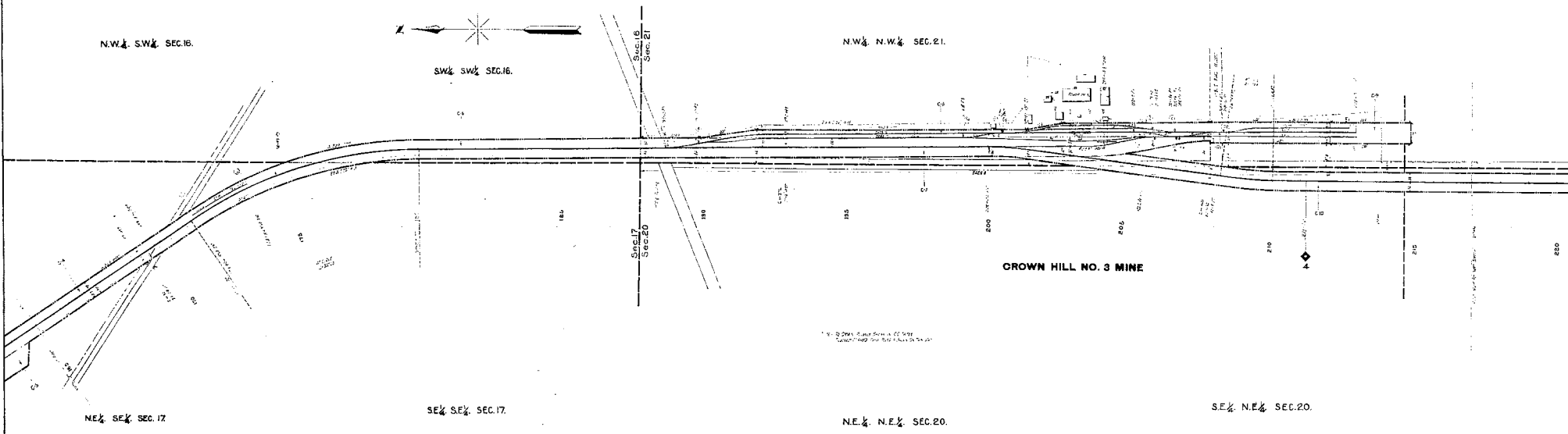
PARCEL CUSTOD	NO.	GRANTOR	GRANTEE	INSTA	DATE	RECORD	SEED	AREA	REMARKS
NO.	NO.					VOL. PAGE DATE	CONDRN	ADCD. SQ. FT.	
04	1000	AMERICAN	AMERICAN	100	10-1-10	10 100 10-1-10	100	100	
08	1000	AMERICAN	AMERICAN	100	10-1-10	10 100 10-1-10	100	100	
12	1000	AMERICAN	AMERICAN	100	10-1-10	10 100 10-1-10	100	100	
16	1000	AMERICAN	AMERICAN	100	10-1-10	10 100 10-1-10	100	100	
20	1000	AMERICAN	AMERICAN	100	10-1-10	10 100 10-1-10	100	100	



N.W. 1/4 S.W. 1/4 SEC. 16.

SW 1/4 SW 1/4 SEC. 16.

N.W. 1/4 N.W. 1/4 SEC. 21.



CROWN HILL NO. 3 MINE

NE 1/4 SE 1/4 SEC. 17.

SE 1/4 SE 1/4 SEC. 17.

NE 1/4 N.E. 1/4 SEC. 20.

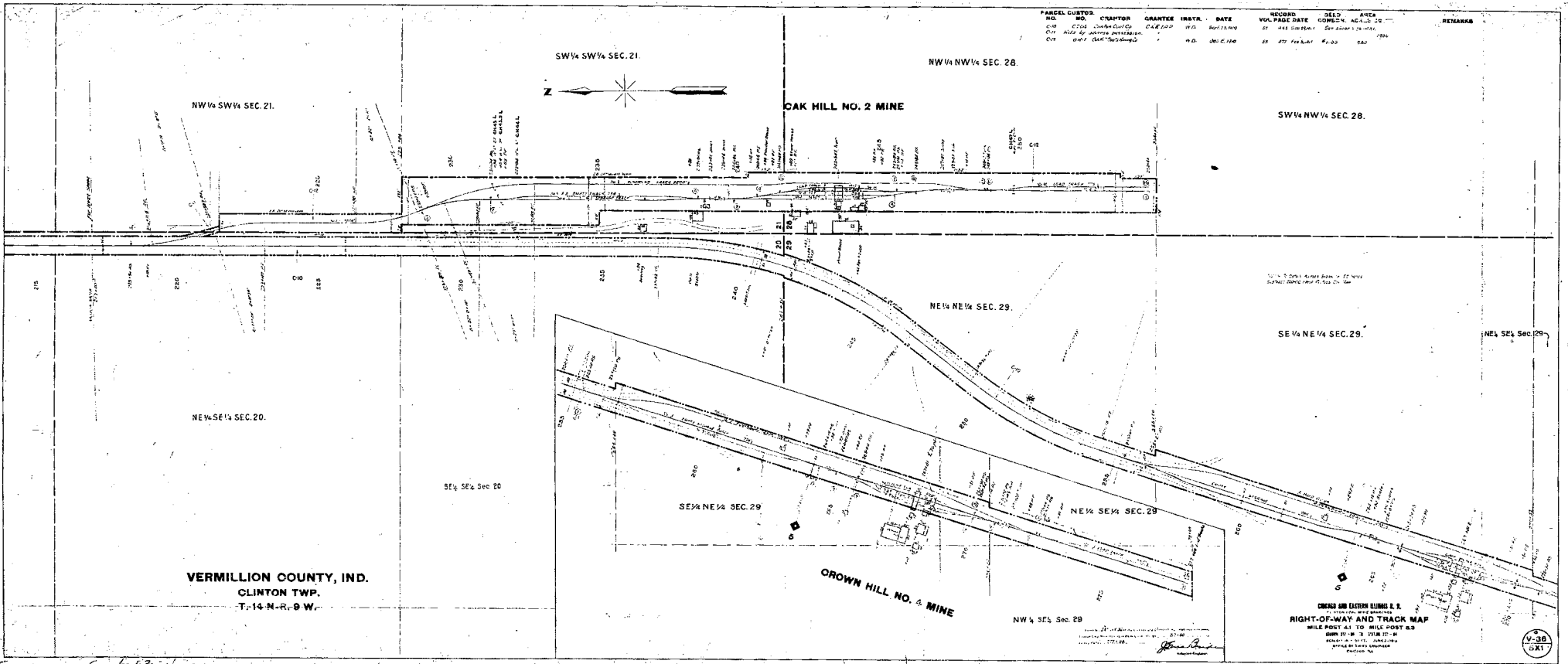
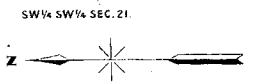
SE 1/4 N.E. 1/4 SEC. 20.

VERMILION COUNTY, IND.
OLINTON TWP.
T. 14 N-R. 9 W.

CHICAGO AND EASTERN ILLINOIS R. R.
RIGHT-OF-WAY AND TRACK MAP
MILE POST 3.1 TO MILE POST 4.1
FROM MILE 0 TO MILE 20 IN
SECTION 17, 18, 19, 20, 21
T. 14 N. R. 9 W. VERMILION COUNTY, IND.
1910



PARCEL	CUSTOMER	GRANTOR	GRANTEE	INSTR.	DATE	ACRES	DEED	AREA	REMARKS
C-20	CTOS	Clinton Coal Co	CAL 200	110	10/15/1909	27	448	200	27
C-21	CTOS	Clinton Coal Co	CAL 200	110	10/15/1909	27	448	200	27
C-22	CTOS	Clinton Coal Co	CAL 200	110	10/15/1909	27	448	200	27

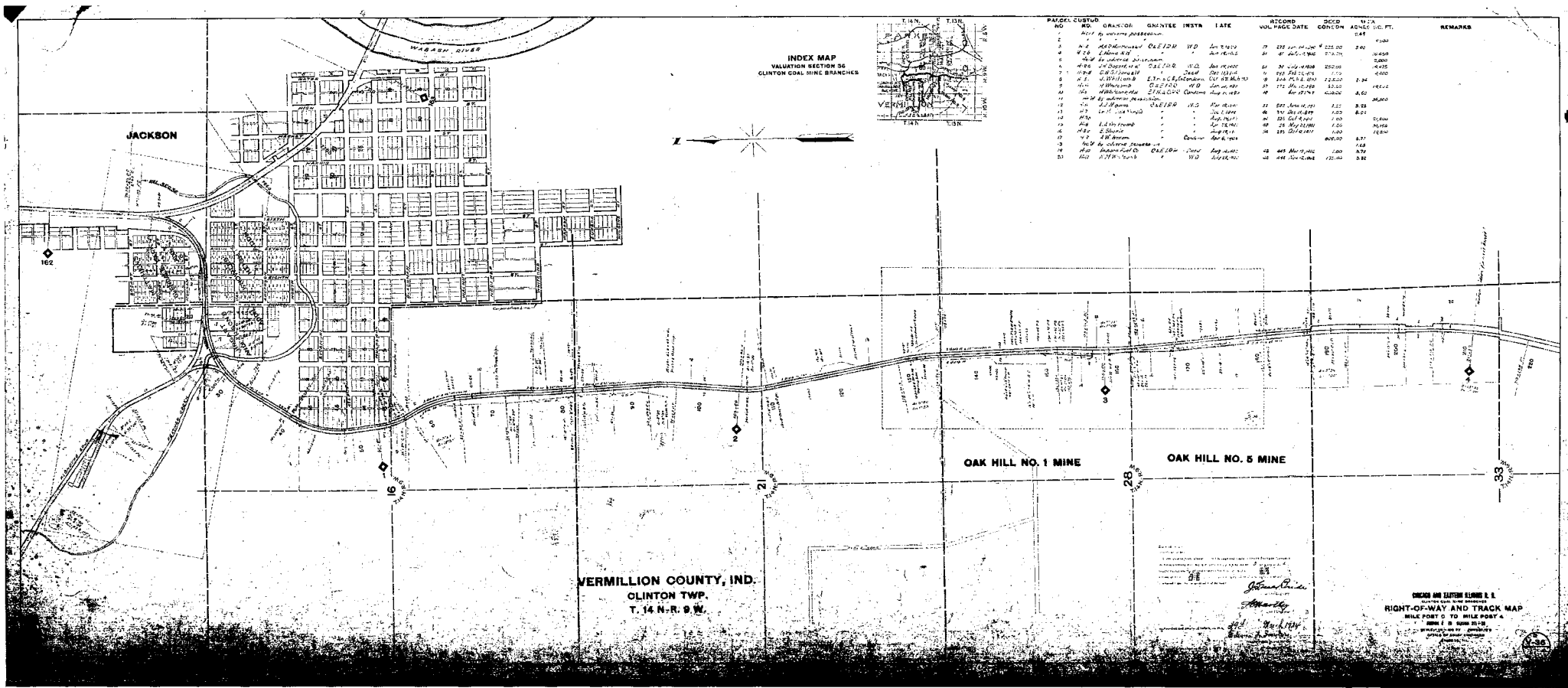


VERMILION COUNTY, IND.
CLINTON TWP.
T-14 N-R-9 W

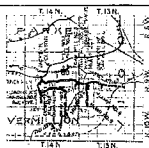
CHAS. AND EASTON ENGINE & S.
RIGHT-OF-WAY AND TRACK MAP
MILE POST 41 TO MILE POST 43
R.R. OF N. S. 1918-19



6-1-13



INDEX MAP
VALUATION SECTION 36
CLINTON COAL MINE BRANCHES



PAGE	CUSTOD NO.	GRANTOR	GRANTEE	INSTA	DATE	RECORD VOLUME	RECORD DATE	ACRES	ADJ. ACRES	REMARKS
1	1	Wm. W. Williams	W.D.	1870	1870	100	1870	100	100	
2	2	Wm. W. Williams	W.D.	1870	1870	100	1870	100	100	
3	3	Wm. W. Williams	W.D.	1870	1870	100	1870	100	100	
4	4	Wm. W. Williams	W.D.	1870	1870	100	1870	100	100	
5	5	Wm. W. Williams	W.D.	1870	1870	100	1870	100	100	
6	6	Wm. W. Williams	W.D.	1870	1870	100	1870	100	100	
7	7	Wm. W. Williams	W.D.	1870	1870	100	1870	100	100	
8	8	Wm. W. Williams	W.D.	1870	1870	100	1870	100	100	
9	9	Wm. W. Williams	W.D.	1870	1870	100	1870	100	100	
10	10	Wm. W. Williams	W.D.	1870	1870	100	1870	100	100	
11	11	Wm. W. Williams	W.D.	1870	1870	100	1870	100	100	
12	12	Wm. W. Williams	W.D.	1870	1870	100	1870	100	100	
13	13	Wm. W. Williams	W.D.	1870	1870	100	1870	100	100	
14	14	Wm. W. Williams	W.D.	1870	1870	100	1870	100	100	
15	15	Wm. W. Williams	W.D.	1870	1870	100	1870	100	100	
16	16	Wm. W. Williams	W.D.	1870	1870	100	1870	100	100	
17	17	Wm. W. Williams	W.D.	1870	1870	100	1870	100	100	
18	18	Wm. W. Williams	W.D.	1870	1870	100	1870	100	100	
19	19	Wm. W. Williams	W.D.	1870	1870	100	1870	100	100	
20	20	Wm. W. Williams	W.D.	1870	1870	100	1870	100	100	
21	21	Wm. W. Williams	W.D.	1870	1870	100	1870	100	100	

VERMILLION COUNTY, IND.
CLINTON TWP.
T. 14 N-R. 9 W.

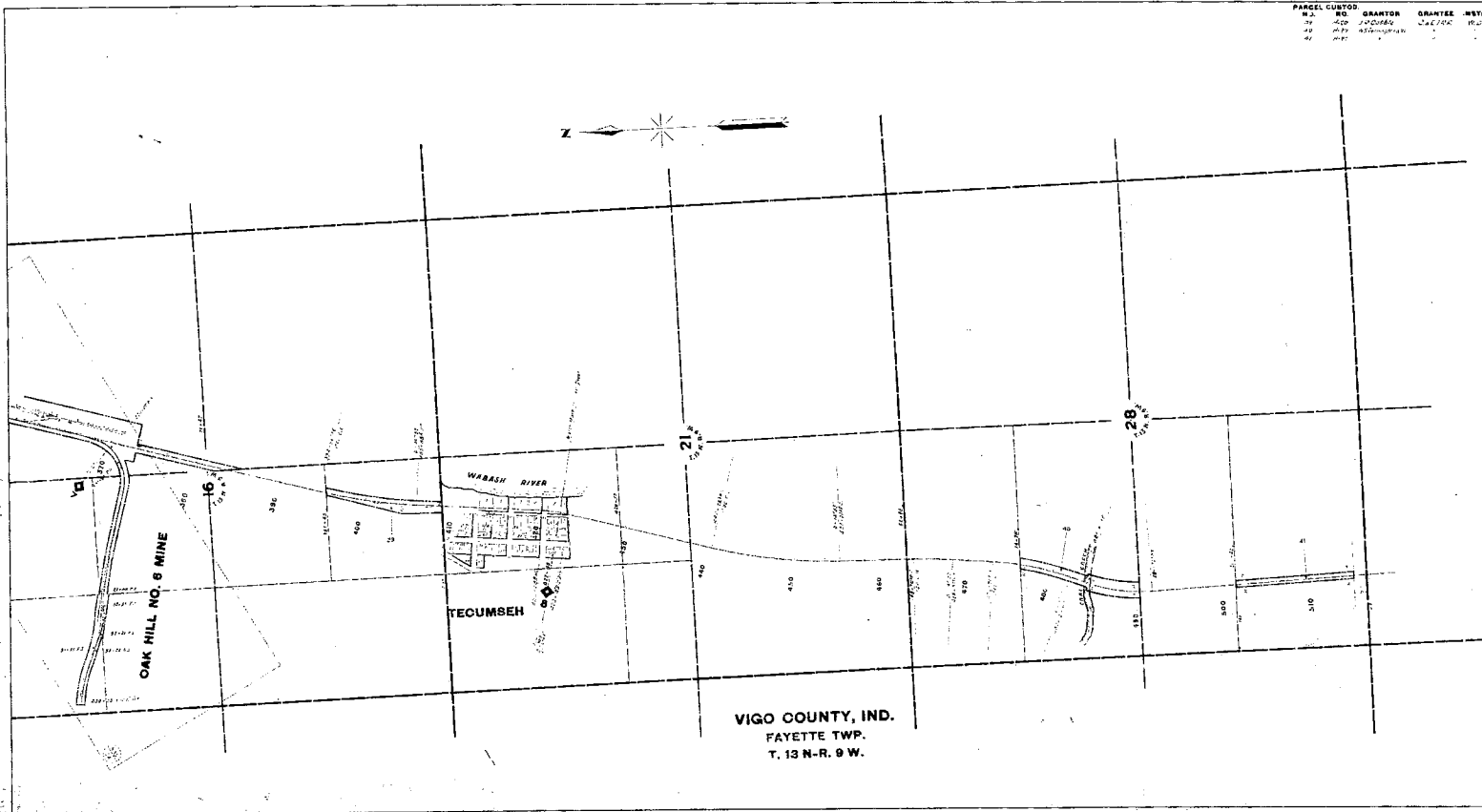
OAK HILL NO. 1 MINE

OAK HILL NO. 5 MINE

John R. ...
Attorney

CLINTON AND CLINTON ALONG E. E.
RIGHT-OF-WAY AND TRACK MAP
MILE POST 0 TO MILE POST 4

PARCEL	CUSTOMER	NO.	GRANTOR	GRANTEE	MTK.	DATE	RECORD	DEED	AREA	REMARKS
NO.							NO.	NO.	ACRES	
16	160	160	J. C. GIBSON	J. C. GIBSON	160	10/15/1900	160	16	160	160
17	170	170	J. C. GIBSON	J. C. GIBSON	170	10/15/1900	170	17	170	170
18	180	180	J. C. GIBSON	J. C. GIBSON	180	10/15/1900	180	18	180	180
19	190	190	J. C. GIBSON	J. C. GIBSON	190	10/15/1900	190	19	190	190
20	200	200	J. C. GIBSON	J. C. GIBSON	200	10/15/1900	200	20	200	200
21	210	210	J. C. GIBSON	J. C. GIBSON	210	10/15/1900	210	21	210	210
22	220	220	J. C. GIBSON	J. C. GIBSON	220	10/15/1900	220	22	220	220
23	230	230	J. C. GIBSON	J. C. GIBSON	230	10/15/1900	230	23	230	230
24	240	240	J. C. GIBSON	J. C. GIBSON	240	10/15/1900	240	24	240	240
25	250	250	J. C. GIBSON	J. C. GIBSON	250	10/15/1900	250	25	250	250
26	260	260	J. C. GIBSON	J. C. GIBSON	260	10/15/1900	260	26	260	260
27	270	270	J. C. GIBSON	J. C. GIBSON	270	10/15/1900	270	27	270	270
28	280	280	J. C. GIBSON	J. C. GIBSON	280	10/15/1900	280	28	280	280

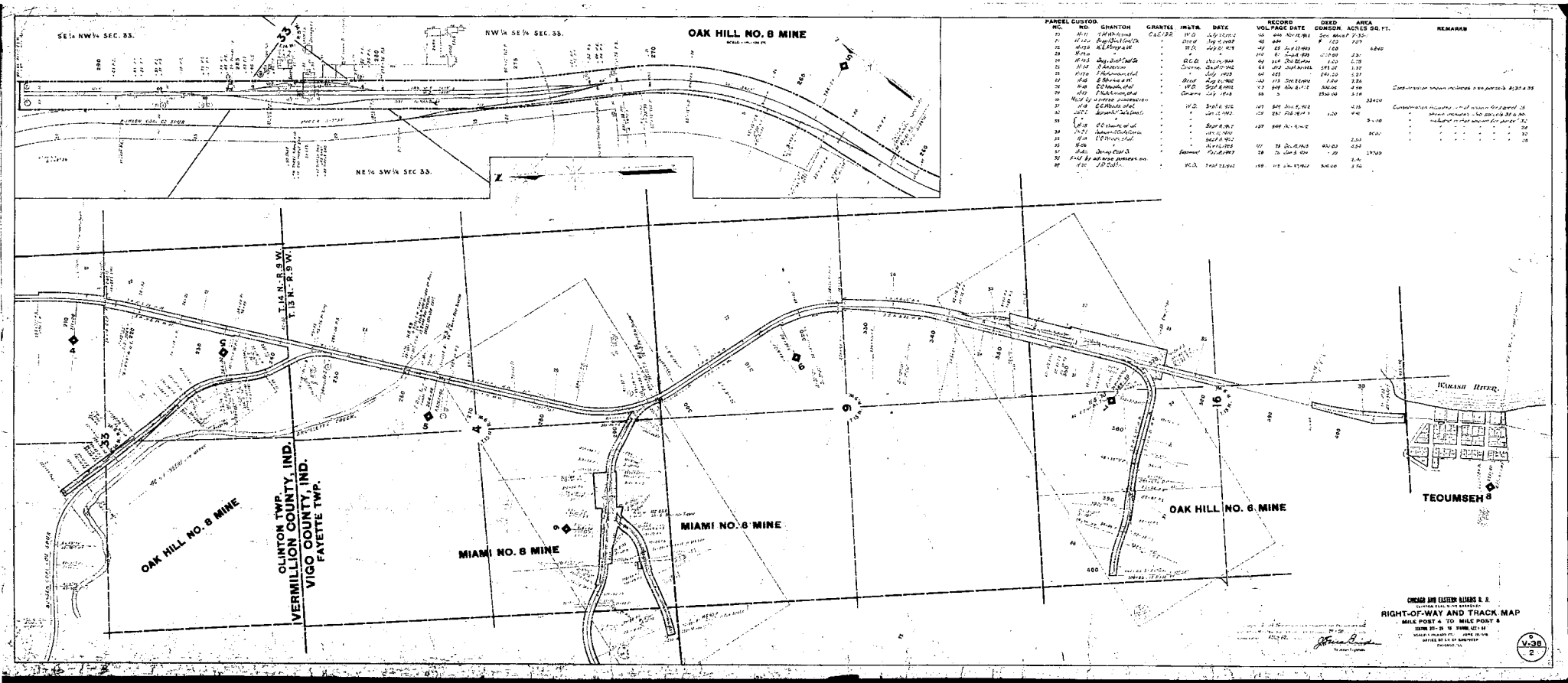


VIGO COUNTY, IND.
 FAYETTE TWP.
 T. 13 N.-R. 9 W.

CHAS. H. & EASTON SURV. CO. S. L.
 RIGHT-OF-WAY AND TRACK MAP

SCALE 1/2" = 100' TO MILE POST 50
 DRAWN BY CHAS. H. & EASTON SURV. CO.
 CHAS. H. & EASTON SURV. CO.
 CHAS. H. & EASTON SURV. CO.

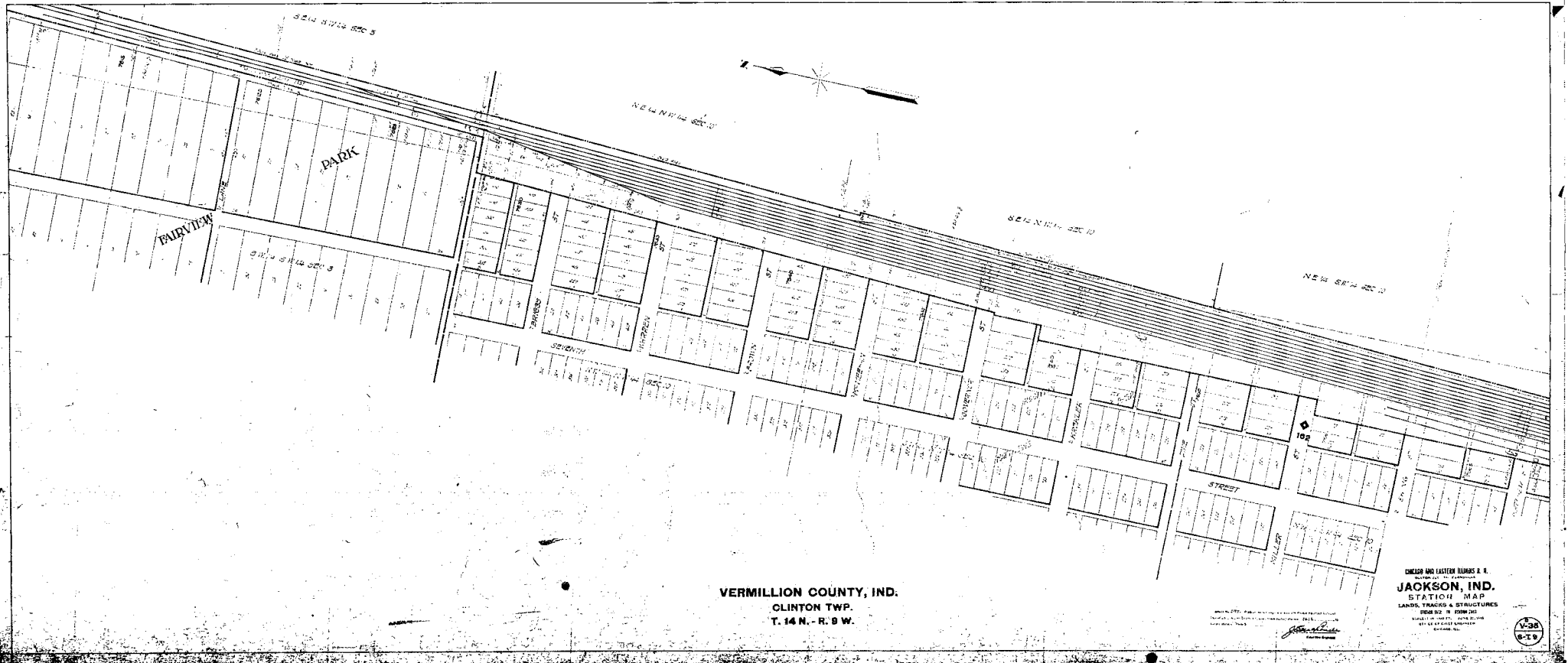




PARCEL NO.	SURV. NO.	GRANTOR	GRANTEE	INSTA.	DATE	VOL. PAGE	DEED NUMBER	ACRES	SQ. FT.	REMARKS
25	111	Wm. H. ...	Chas. J. ...	W.D.	Aug 1892	48	484	5.22	226,500	
26	112	Wm. H. ...	Chas. J. ...	W.D.	Aug 1892	49	485	5.22	226,500	
27	113	Wm. H. ...	Chas. J. ...	W.D.	Aug 1892	50	486	5.22	226,500	
28	114	Wm. H. ...	Chas. J. ...	W.D.	Aug 1892	51	487	5.22	226,500	
29	115	Wm. H. ...	Chas. J. ...	W.D.	Aug 1892	52	488	5.22	226,500	
30	116	Wm. H. ...	Chas. J. ...	W.D.	Aug 1892	53	489	5.22	226,500	
31	117	Wm. H. ...	Chas. J. ...	W.D.	Aug 1892	54	490	5.22	226,500	
32	118	Wm. H. ...	Chas. J. ...	W.D.	Aug 1892	55	491	5.22	226,500	
33	119	Wm. H. ...	Chas. J. ...	W.D.	Aug 1892	56	492	5.22	226,500	
34	120	Wm. H. ...	Chas. J. ...	W.D.	Aug 1892	57	493	5.22	226,500	
35	121	Wm. H. ...	Chas. J. ...	W.D.	Aug 1892	58	494	5.22	226,500	
36	122	Wm. H. ...	Chas. J. ...	W.D.	Aug 1892	59	495	5.22	226,500	
37	123	Wm. H. ...	Chas. J. ...	W.D.	Aug 1892	60	496	5.22	226,500	
38	124	Wm. H. ...	Chas. J. ...	W.D.	Aug 1892	61	497	5.22	226,500	
39	125	Wm. H. ...	Chas. J. ...	W.D.	Aug 1892	62	498	5.22	226,500	
40	126	Wm. H. ...	Chas. J. ...	W.D.	Aug 1892	63	499	5.22	226,500	
41	127	Wm. H. ...	Chas. J. ...	W.D.	Aug 1892	64	500	5.22	226,500	
42	128	Wm. H. ...	Chas. J. ...	W.D.	Aug 1892	65	501	5.22	226,500	
43	129	Wm. H. ...	Chas. J. ...	W.D.	Aug 1892	66	502	5.22	226,500	
44	130	Wm. H. ...	Chas. J. ...	W.D.	Aug 1892	67	503	5.22	226,500	
45	131	Wm. H. ...	Chas. J. ...	W.D.	Aug 1892	68	504	5.22	226,500	
46	132	Wm. H. ...	Chas. J. ...	W.D.	Aug 1892	69	505	5.22	226,500	
47	133	Wm. H. ...	Chas. J. ...	W.D.	Aug 1892	70	506	5.22	226,500	
48	134	Wm. H. ...	Chas. J. ...	W.D.	Aug 1892	71	507	5.22	226,500	
49	135	Wm. H. ...	Chas. J. ...	W.D.	Aug 1892	72	508	5.22	226,500	
50	136	Wm. H. ...	Chas. J. ...	W.D.	Aug 1892	73	509	5.22	226,500	
51	137	Wm. H. ...	Chas. J. ...	W.D.	Aug 1892	74	510	5.22	226,500	
52	138	Wm. H. ...	Chas. J. ...	W.D.	Aug 1892	75	511	5.22	226,500	
53	139	Wm. H. ...	Chas. J. ...	W.D.	Aug 1892	76	512	5.22	226,500	
54	140	Wm. H. ...	Chas. J. ...	W.D.	Aug 1892	77	513	5.22	226,500	
55	141	Wm. H. ...	Chas. J. ...	W.D.	Aug 1892	78	514	5.22	226,500	
56	142	Wm. H. ...	Chas. J. ...	W.D.	Aug 1892	79	515	5.22	226,500	
57	143	Wm. H. ...	Chas. J. ...	W.D.	Aug 1892	80	516	5.22	226,500	
58	144	Wm. H. ...	Chas. J. ...	W.D.	Aug 1892	81	517	5.22	226,500	
59	145	Wm. H. ...	Chas. J. ...	W.D.	Aug 1892	82	518	5.22	226,500	
60	146	Wm. H. ...	Chas. J. ...	W.D.	Aug 1892	83	519	5.22	226,500	
61	147	Wm. H. ...	Chas. J. ...	W.D.	Aug 1892	84	520	5.22	226,500	
62	148	Wm. H. ...	Chas. J. ...	W.D.	Aug 1892	85	521	5.22	226,500	
63	149	Wm. H. ...	Chas. J. ...	W.D.	Aug 1892	86	522	5.22	226,500	
64	150	Wm. H. ...	Chas. J. ...	W.D.	Aug 1892	87	523	5.22	226,500	
65	151	Wm. H. ...	Chas. J. ...	W.D.	Aug 1892	88	524	5.22	226,500	
66	152	Wm. H. ...	Chas. J. ...	W.D.	Aug 1892	89	525	5.22	226,500	
67	153	Wm. H. ...	Chas. J. ...	W.D.	Aug 1892	90	526	5.22	226,500	
68	154	Wm. H. ...	Chas. J. ...	W.D.	Aug 1892	91	527	5.22	226,500	
69	155	Wm. H. ...	Chas. J. ...	W.D.	Aug 1892	92	528	5.22	226,500	
70	156	Wm. H. ...	Chas. J. ...	W.D.	Aug 1892	93	529	5.22	226,500	
71	157	Wm. H. ...	Chas. J. ...	W.D.	Aug 1892	94	530	5.22	226,500	
72	158	Wm. H. ...	Chas. J. ...	W.D.	Aug 1892	95	531	5.22	226,500	
73	159	Wm. H. ...	Chas. J. ...	W.D.	Aug 1892	96	532	5.22	226,500	
74	160	Wm. H. ...	Chas. J. ...	W.D.	Aug 1892	97	533	5.22	226,500	
75	161	Wm. H. ...	Chas. J. ...	W.D.	Aug 1892	98	534	5.22	226,500	
76	162	Wm. H. ...	Chas. J. ...	W.D.	Aug 1892	99	535	5.22	226,500	
77	163	Wm. H. ...	Chas. J. ...	W.D.	Aug 1892	100	536	5.22	226,500	

CHICAGO AND EASTERN ILLINOIS R. R.
 RIGHT-OF-WAY AND TRACK MAP
 MILE POST 4 TO MILE POST 8
 SCALE 1" = 400 FT.
 DRAWN BY W. H. ...
 CHECKED BY ...
 DATE ...
 PROJECT NO. ...





VERMILLION COUNTY, IND.
 CLINTON TWP.
 T. 14 N. - R. 9 W.

CHICAGO AND EASTERN ILLINOIS R. R.
 JACKSON, IND.
 STATION MAP
 LANDS, TRAILS & STRUCTURES
 SCALE 1/4" = 100' 0"
 MADE BY J. H. B. CO. CHICAGO, ILL.
 1908

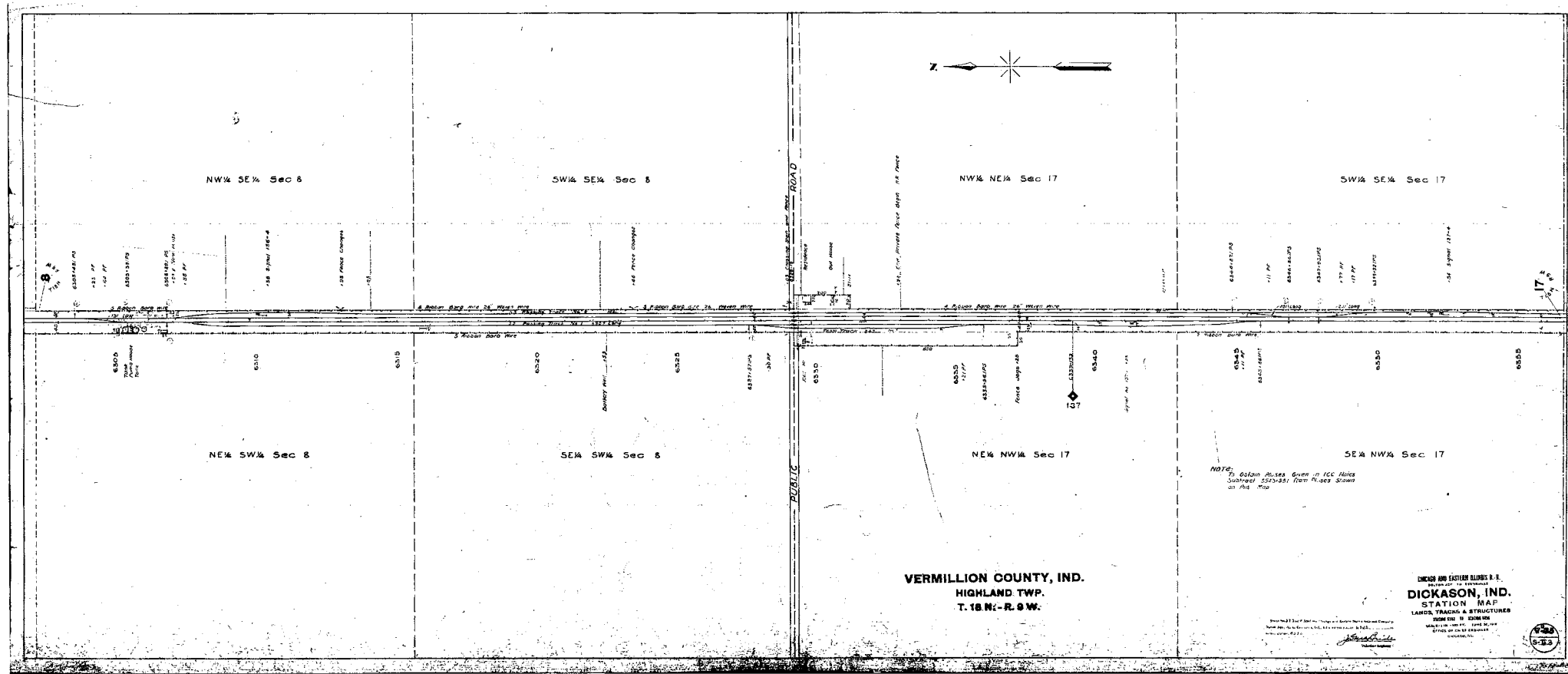


VERMILLION COUNTY, IND.
CLINTON TWP.
T. 14 N. - R. 9 W.



CINCINNATI AND EASTERN ALUMINUM CO. R.
CLINTON, IND.
STATION MAP
LANDS, TRACKS & STRUCTURES
JUNE 28, 1916
SCALE 1" = 400' (1" = 100 M)
CORRECTED TO DATE
CINCINNATI, OHIO





NW 1/4 SE 1/4 Sec 8

SW 1/4 SE 1/4 Sec 8

NW 1/4 NE 1/4 Sec 17

SW 1/4 SE 1/4 Sec 17

NE 1/4 SW 1/4 Sec 8

SE 1/4 SW 1/4 Sec 8

NE 1/4 NW 1/4 Sec 17

SE 1/4 NW 1/4 Sec 17

VERMILLION COUNTY, IND.
 HIGHLAND TWP.
 T. 18 N. - R. 9 W.

NOTE:
 To obtain places given in I.C. files
 subtract 5523451 from places shown
 on this map.

DICKSON AND EASTMAN BROTHERS, E. P.
 Surveyors & Engineers
DICKSON, IND.
 STATION MAP
 LANDS, TRACES & STRUCTURES
 SHOWING THE
 MARKET VALUE OF
 LANDS IN THE T. 18 N. R. 9 W.
 VERMILLION COUNTY, IND.
 1922





VERMILLION COUNTY, IND.
EUGENE TWP.
T. 18 N. - R. 9 W.

SW 1/4 SE 1/4 Sec 17

NW 1/4 NE 1/4 Sec 20

SW 1/4 NE 1/4 Sec 20

NW 1/4 SE 1/4 Sec 20

SE 1/4 SW 1/4 Sec 17

NE 1/4 NW 1/4 Sec 20

SE 1/4 NW 1/4 Sec 20

NE 1/4 SW 1/4 Sec 20

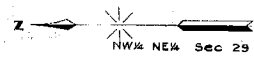
NOTE:
To obtain Plotting Order for JCC Maps
Submit \$248.00. From the JCC Office
on the 15th

CHICAGO AND EASTERN RAILROADS
DICKASON PIT, IND.
STATION MAP
LANDS, TRACKS & STRUCTURES
DICKASON PIT, IND.
CHICAGO AND EASTERN RAILROADS



2-1-5

VERMILLION COUNTY, IND.
EUGENE TWP.
T. 18 N. - R. 8 W.



SW 1/4 SE 1/4 Sec 20

NW 1/4 NE 1/4 Sec 29

SW 1/4 NE 1/4 Sec 29

NW 1/4 NE 1/4 Sec 29

SE 1/4 SW 1/4 Sec 20

NE 1/4 NW 1/4 Sec 29

SE 1/4 NW 1/4 Sec 29

NW 1/4 SW 1/4 Sec 29

CHICAGO AND EASTERN RAILROAD CO.
DICKASON PIT, IND.
STATION MAP
LANDS, TRACES & STRUCTURES
JUNE 10, 1916
EUGENE TWP., INDIANA
1877-1916
CINCINNATI, OHIO



VERMILLION COUNTY, IND.
EUGENE TWP.



SW 1/4 Sec 32

NE 1/4 Sec 5

NW 1/4 Sec 5

SW 1/4 Sec 5

SE 1/4 SW 1/4 Sec 5

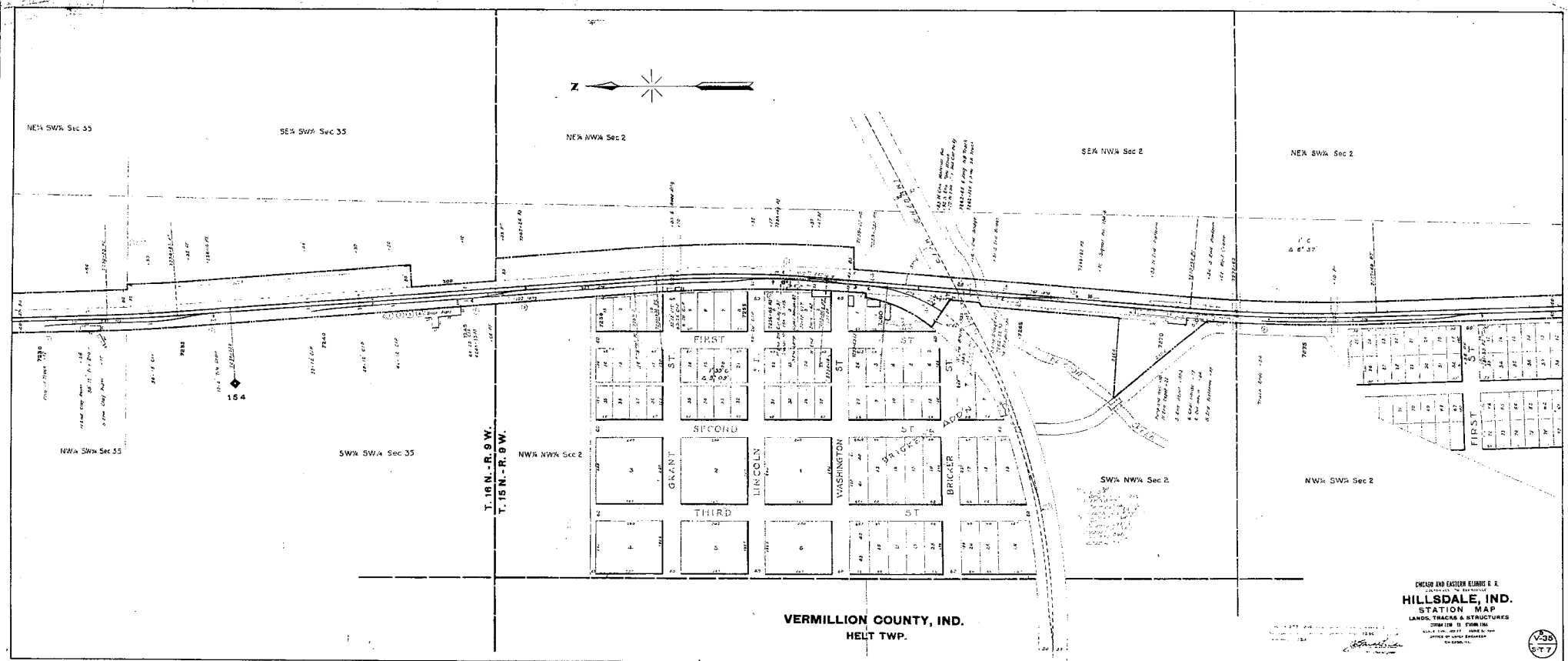
SE 1/4 SW 1/4 Sec 32

NW 1/4 Sec 5

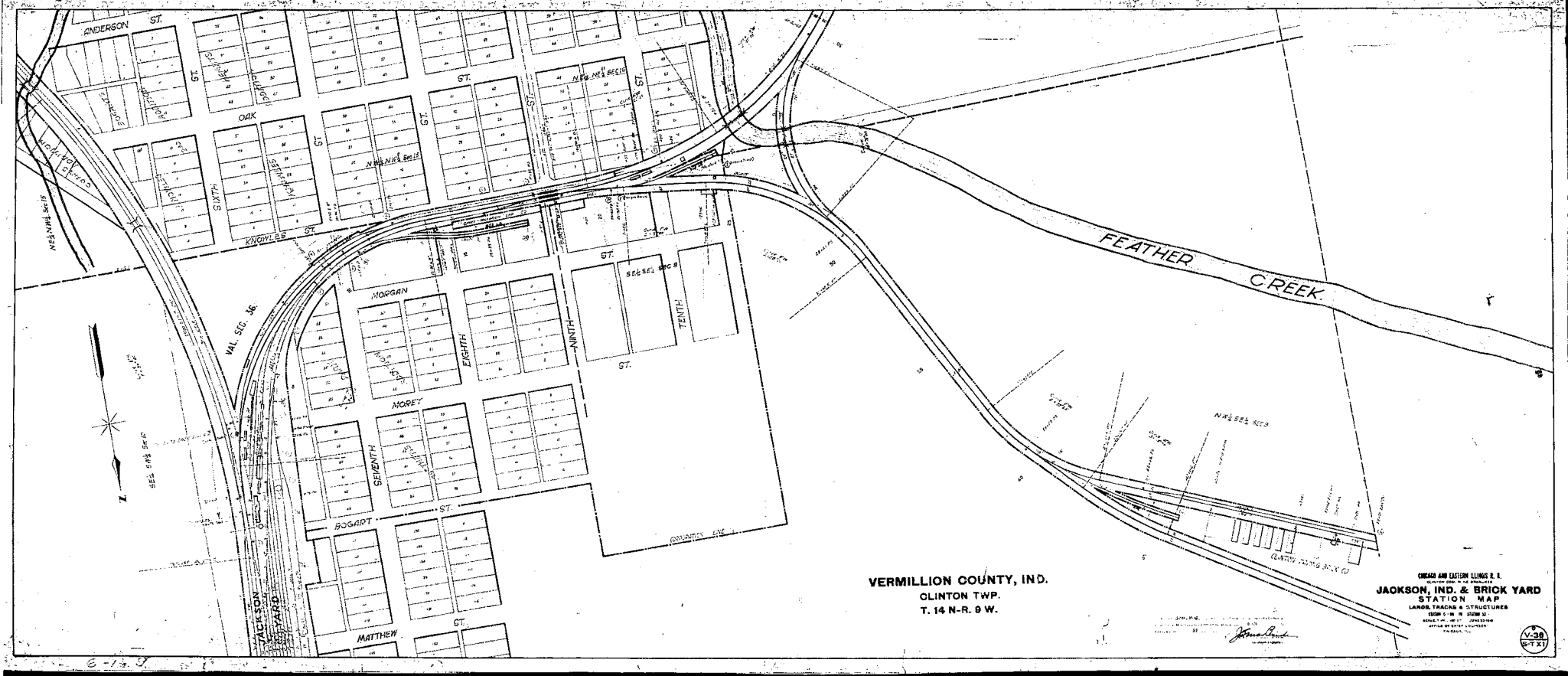
CHECK AND LISTEN ALONG R. &
CAYUGA, IND.
STATION MAP
LANDS, TRACKS & STRUCTURES
CHAS. H. BROWN
1914
VERMILLION COUNTY, IND.



2-1-8



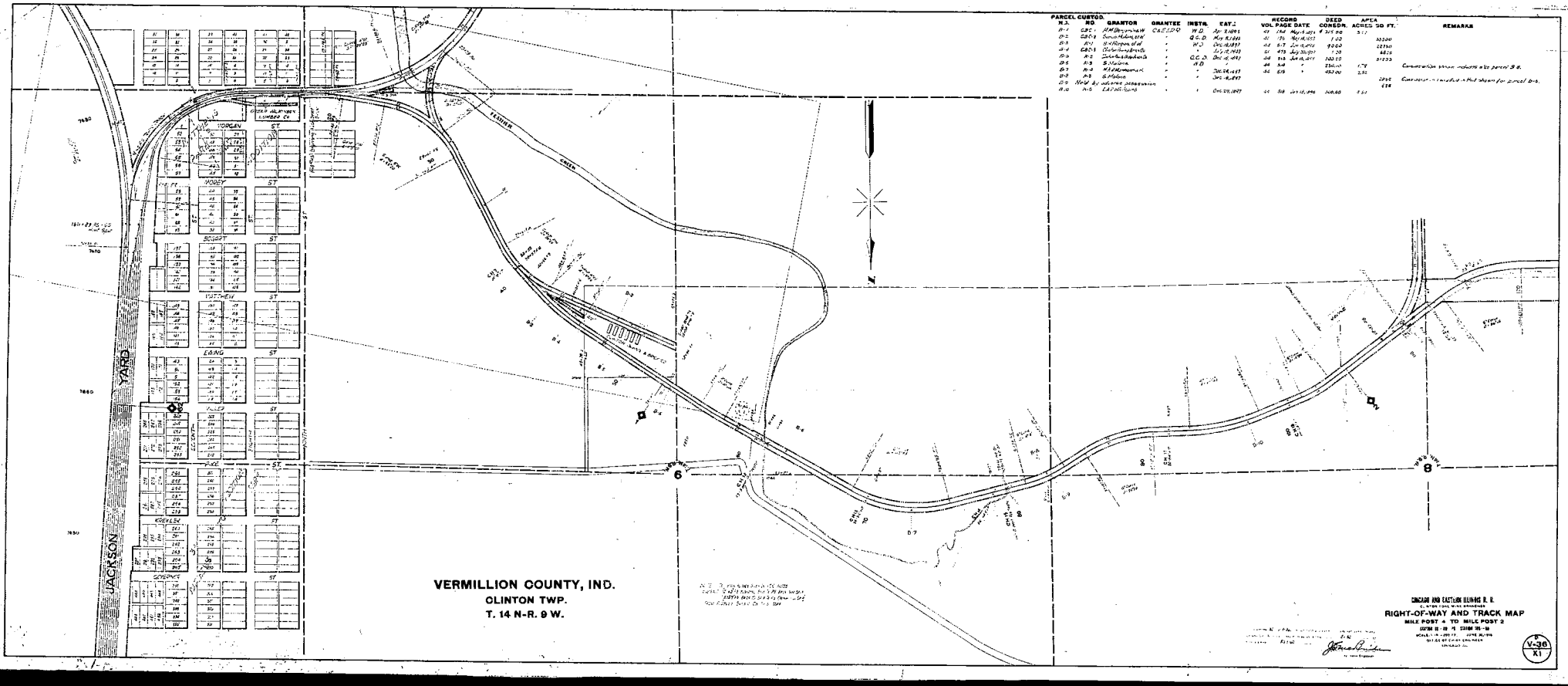
2-1-12



VERMILLION COUNTY, IND.
 CLINTON TWP.
 T. 14 N.-R. 9 W.

CHICAGO AND EASTERN COLLIER & S.
 ENGINEERS IN CHARGE OF THE WORK
JACKSON, IND. & BRICK YARD
 STATION MAP
 LAMOR TRACKS & STRUCTURES
 ISSUE NO. 10 (2000)
 SCALE 1" = 100' (2000)
 DATE OF SURVEY
 PARCEL NO.

V-38
 ST XI



PARCEL	CUSTOD.	NO.	GRANTOR	GRANTEE	INSTR.	CAT.	RECORDS	DEED	ACRES	APFA	REMARKS
							VOL.	PAGE	CONDN.	ADRES.	SO. FT.
01		227	W. H. H. H. H. H.	W. H. H. H. H.	CC 2	10	100	100	100	100	
02		228	W. H. H. H. H.	W. H. H. H. H.	CC 2	10	100	100	100	100	
03		229	W. H. H. H. H.	W. H. H. H. H.	CC 2	10	100	100	100	100	
04		230	W. H. H. H. H.	W. H. H. H. H.	CC 2	10	100	100	100	100	
05		231	W. H. H. H. H.	W. H. H. H. H.	CC 2	10	100	100	100	100	
06		232	W. H. H. H. H.	W. H. H. H. H.	CC 2	10	100	100	100	100	
07		233	W. H. H. H. H.	W. H. H. H. H.	CC 2	10	100	100	100	100	
08		234	W. H. H. H. H.	W. H. H. H. H.	CC 2	10	100	100	100	100	
09		235	W. H. H. H. H.	W. H. H. H. H.	CC 2	10	100	100	100	100	
10		236	W. H. H. H. H.	W. H. H. H. H.	CC 2	10	100	100	100	100	
11		237	W. H. H. H. H.	W. H. H. H. H.	CC 2	10	100	100	100	100	
12		238	W. H. H. H. H.	W. H. H. H. H.	CC 2	10	100	100	100	100	
13		239	W. H. H. H. H.	W. H. H. H. H.	CC 2	10	100	100	100	100	
14		240	W. H. H. H. H.	W. H. H. H. H.	CC 2	10	100	100	100	100	
15		241	W. H. H. H. H.	W. H. H. H. H.	CC 2	10	100	100	100	100	
16		242	W. H. H. H. H.	W. H. H. H. H.	CC 2	10	100	100	100	100	
17		243	W. H. H. H. H.	W. H. H. H. H.	CC 2	10	100	100	100	100	
18		244	W. H. H. H. H.	W. H. H. H. H.	CC 2	10	100	100	100	100	
19		245	W. H. H. H. H.	W. H. H. H. H.	CC 2	10	100	100	100	100	
20		246	W. H. H. H. H.	W. H. H. H. H.	CC 2	10	100	100	100	100	
21		247	W. H. H. H. H.	W. H. H. H. H.	CC 2	10	100	100	100	100	
22		248	W. H. H. H. H.	W. H. H. H. H.	CC 2	10	100	100	100	100	
23		249	W. H. H. H. H.	W. H. H. H. H.	CC 2	10	100	100	100	100	
24		250	W. H. H. H. H.	W. H. H. H. H.	CC 2	10	100	100	100	100	
25		251	W. H. H. H. H.	W. H. H. H. H.	CC 2	10	100	100	100	100	
26		252	W. H. H. H. H.	W. H. H. H. H.	CC 2	10	100	100	100	100	
27		253	W. H. H. H. H.	W. H. H. H. H.	CC 2	10	100	100	100	100	
28		254	W. H. H. H. H.	W. H. H. H. H.	CC 2	10	100	100	100	100	
29		255	W. H. H. H. H.	W. H. H. H. H.	CC 2	10	100	100	100	100	
30		256	W. H. H. H. H.	W. H. H. H. H.	CC 2	10	100	100	100	100	
31		257	W. H. H. H. H.	W. H. H. H. H.	CC 2	10	100	100	100	100	
32		258	W. H. H. H. H.	W. H. H. H. H.	CC 2	10	100	100	100	100	
33		259	W. H. H. H. H.	W. H. H. H. H.	CC 2	10	100	100	100	100	
34		260	W. H. H. H. H.	W. H. H. H. H.	CC 2	10	100	100	100	100	
35		261	W. H. H. H. H.	W. H. H. H. H.	CC 2	10	100	100	100	100	
36		262	W. H. H. H. H.	W. H. H. H. H.	CC 2	10	100	100	100	100	
37		263	W. H. H. H. H.	W. H. H. H. H.	CC 2	10	100	100	100	100	
38		264	W. H. H. H. H.	W. H. H. H. H.	CC 2	10	100	100	100	100	
39		265	W. H. H. H. H.	W. H. H. H. H.	CC 2	10	100	100	100	100	
40		266	W. H. H. H. H.	W. H. H. H. H.	CC 2	10	100	100	100	100	
41		267	W. H. H. H. H.	W. H. H. H. H.	CC 2	10	100	100	100	100	
42		268	W. H. H. H. H.	W. H. H. H. H.	CC 2	10	100	100	100	100	
43		269	W. H. H. H. H.	W. H. H. H. H.	CC 2	10	100	100	100	100	
44		270	W. H. H. H. H.	W. H. H. H. H.	CC 2	10	100	100	100	100	
45		271	W. H. H. H. H.	W. H. H. H. H.	CC 2	10	100	100	100	100	
46		272	W. H. H. H. H.	W. H. H. H. H.	CC 2	10	100	100	100	100	
47		273	W. H. H. H. H.	W. H. H. H. H.	CC 2	10	100	100	100	100	
48		274	W. H. H. H. H.	W. H. H. H. H.	CC 2	10	100	100	100	100	
49		275	W. H. H. H. H.	W. H. H. H. H.	CC 2	10	100	100	100	100	
50		276	W. H. H. H. H.	W. H. H. H. H.	CC 2	10	100	100	100	100	
51		277	W. H. H. H. H.	W. H. H. H. H.	CC 2	10	100	100	100	100	
52		278	W. H. H. H. H.	W. H. H. H. H.	CC 2	10	100	100	100	100	
53		279	W. H. H. H. H.	W. H. H. H. H.	CC 2	10	100	100	100	100	
54		280	W. H. H. H. H.	W. H. H. H. H.	CC 2	10	100	100	100	100	
55		281	W. H. H. H. H.	W. H. H. H. H.	CC 2	10	100	100	100	100	
56		282	W. H. H. H. H.	W. H. H. H. H.	CC 2	10	100	100	100	100	
57		283	W. H. H. H. H.	W. H. H. H. H.	CC 2	10	100	100	100	100	
58		284	W. H. H. H. H.	W. H. H. H. H.	CC 2	10	100	100	100	100	
59		285	W. H. H. H. H.	W. H. H. H. H.	CC 2	10	100	100	100	100	
60		286	W. H. H. H. H.	W. H. H. H. H.	CC 2	10	100	100	100	100	
61		287	W. H. H. H. H.	W. H. H. H. H.	CC 2	10	100	100	100	100	
62		288	W. H. H. H. H.	W. H. H. H. H.	CC 2	10	100	100	100	100	
63		289	W. H. H. H. H.	W. H. H. H. H.	CC 2	10	100	100	100	100	
64		290	W. H. H. H. H.	W. H. H. H. H.	CC 2	10	100	100	100	100	
65		291	W. H. H. H. H.	W. H. H. H. H.	CC 2	10	100	100	100	100	
66		292	W. H. H. H. H.	W. H. H. H. H.	CC 2	10	100	100	100	100	
67		293	W. H. H. H. H.	W. H. H. H. H.	CC 2	10	100	100	100	100	
68		294	W. H. H. H. H.	W. H. H. H. H.	CC 2	10	100	100	100	100	
69		295	W. H. H. H. H.	W. H. H. H. H.	CC 2	10	100	100	100	100	
70		296	W. H. H. H. H.	W. H. H. H. H.	CC 2	10	100	100	100	100	
71		297	W. H. H. H. H.	W. H. H. H. H.	CC 2	10	100	100	100	100	
72		298	W. H. H. H. H.	W. H. H. H. H.	CC 2	10	100	100	100	100	
73		299	W. H. H. H. H.	W. H. H. H. H.	CC 2	10	100	100	100	100	
74		300	W. H. H. H. H.	W. H. H. H. H.	CC 2	10	100	100	100	100	

VERMILLION COUNTY, IND.
CLINTON TWP.
T. 14 N-R. 9 W.

AS TO THE CORRECTNESS OF THE DATA
HEREON THE ENGINEER HAS NO RESPONSIBILITY
EXCEPT AS TO THE ACCURACY OF THE DATA
HEREON AS SUPPLIED BY THE GRANTEE.

ENGINEER AND SURVEYOR
RIGHT-OF-WAY AND TRACK MAP

John R. [Signature]



R. R. Right of Ways

Deed Record Book #44-

Page 513 - To C. & E. I. from Clinton Paving & Brick Co.
S. 9, T. 14, R. 9 - SE¹/₄ - .72 Ac.

Page 514 - To C. & E. I. from Sarah Malone
S. 9, T. 14, R. 9 - W¹/₂, NW¹/₄, SE¹/₄ + N¹/₂, SW¹/₄
2.57 Ac.

Page 516 - To C. & E. I. from Martha A. R. Matthews &
Claude. S. 9, T. 14, R. 9 - S¹/₂, NW¹/₄, 2.52 Ac.

Page 517 - To C. & E. I. from Brown(?) H. Morgan,
Tom L. Morey & Clara S., John W. Bogart &
Melissa A. . S. 9, T. 14, R. 9 - SE¹/₄ .55 Ac.

Page 518 - To C. & E. I. from Lydia A. P. Whitcomb
S. 8, T. 14, R. 9 - N¹/₂, SE¹/₄ 4.50 Ac

Book #48 -

Page 544 - To C. & E. I. from Theodore &
Jessie Keller - 3-30-03

Coal Co.

Deed Book 50 -

Page 582 - To Oak Hill Coal & Mining Co. from John F. Walter & Minnie Walter. S. 13, T. 14, R. 10 - 17 1/2 Acres
S 1/2, NE 1/4

Page 583 - To Oak Hill from John E. Gregg & Miriam Gregg
S. 12, T. 14, R. 10. W 1/2, SE 1/4, ~~SW 1/4~~ SE 1/4 +
S 1/4, W 1/2, NE 1/4 of the SE 1/4 5 Ac.

Page 583. To Oak Hill from Angeline Luce & Wm H. Luce
S. 13, T. 14, R. 10. SE 1/4, NW 1/4

Page 584 - To Oak Hill from Everett Dowdy & Mollie Dowdy; Justice Aukerman & Hester; Frank Ambrose & May; John E. Gregg & Miriam. S. 12, T. 14, R. 10. NE 1/4, SE 1/4
40 Ac.

Page 584 - To Oak Hill from Justice Aukerman & Hester. S. 7, T. 14, R. 9 NW 1/4, SW fractional quarter 36 Ac.

Edward Shirkie et ux to C. & E. I. R. R. Co. - - - - - Warranty Deed.

This Indenture Witnesseth that Edward Shirkie and Laura B. Shirkie his wife of Vermillion County in the State of Indiana, Convey and Warrant to Chicago and Eastern Illinois Railroad Company, a corporation for, and in consideration of the sum of One dollar (\$1.00) the following described real estate in Vermillion County State of Indiana to wit: Beginning at a point in the east and west center line of section twenty eight (28) township fourteen (14) north range nine (9) west thirty three (33) feet westwardly at right angles from the center line of the main track of Hunt's Extension of the Chicago and Eastern Illinois Railroad: thence southwardly parallel to and thirty three (33) feet westwardly at right angles from the center line of said main track, to the south line of the north half of the northeast quarter of the southeast quarter; thence west sixty (60) feet; thence northwardly to place of beginning, containing forty five hundredths ($\frac{45}{100}$) acres more or less. All the coal and all other minerals underlying the above described real estate is hereby reserved together with the right to mine and remove the same without any liability whatsoever for subsidence of the surface caused by the removal of said coal and all other minerals.

In Witness Whereof the said Edward Shirkie and Laura B. Shirkie his wife have hereunto set their hands and seals this 19th day of August 1911.

Edward Shirkie
Laura B. Shirkie

State of Indiana, Vermillion County SS:

Before me the undersigned a Notary Public in and for said County and State this 19th day of August 1911 personally appeared Edward Shirkie and Laura B. Shirkie his wife and Acknowledged the execution of the annexed deed.

Witness my hand and official seal.

My Commission Expires May 29, 1914 (Seal)

Henry Adamson Notary Public.

Recorded October 9 1911 at 11 A.M. - - - - - Frank R Johnson Recorder.

Oak Hill Coal and Mining Co. to C & E I R R Co. - - - - - Warranty Deed.

This Indenture Witnesseth, that Oak Hill Coal and Mining Company a corporation of the State of Indiana conveys and warrants to Chicago and Eastern Illinois Railroad Company a corporation for and in consideration of the sum of one dollar (\$1.00) the following described real estate in Vermillion County State of Indiana to wit: Beginning at a point thirty three (33) feet westwardly at right angles from the center line of the main track of Hunt's extension of the Chicago and Eastern Illinois Railroad measured from a point five hundred and fifty (550) feet northwardly from the intersection of the center line of said main track with the east and west center line of section twenty eight (28) township fourteen (14) north range nine (9) west, thence northwardly parallel to and thirty three (33) feet westwardly at right angles from the center line of said main track seven hundred (700) feet; thence southwardly five hundred (500) feet to a point eighty (80) feet westwardly at right angles from the center line of said main track; thence southwardly parallel to and eighty (80) feet westwardly at right angles from the center line of said main track two hundred (200) feet; thence eastwardly to the point of beginning and containing an area of forty nine hundredths (.49) of an acre more or less. All the coal and all other miner also underlying the above described real estate is hereby reserved together with the right to mine and remove the same without any liability whatsoever for subsidence of the surface caused by the removal of said coal and all other minerals.

In Witness Whereof the said Oak Hill Coal and Mining Company has caused this deed to be signed by its duly authorized officers and its seal affixed this 19th day of August 1911.

Oak Hill Coal and Mining Company.
By Edward Shirkie President
And Hugh Shirkie Secretary.

(Seal)
State of Indiana Vermillion County SS:

Before me the undersigned a notary public in and for said County and State this 19th day of August 1911 personally appeared Edward Shirkie President of Oak Hill Coal and Mining Company and as such president acknowledged the execution of the annexed deed. Witness my hand and seal this 19th day of August 1911.
My Commission Expires May 29, 1914 (SEAL) Henry Adamson Notary Public.

State of Illinois Cook County SS:

Before me the undersigned a notary public in and for said County and State this 12th day of September 1911 personally appeared Hugh Shirkie Secretary of Oak Hill Coal and Mining Company and as such Secretary acknowledged the execution of the annexed deed. Witness my hand and official seal
My Commission Expires Sept. 8th 1914. (SEAL) William H. D. Gibson Notary Public.
Recorded Oct. 9 1911 at 11 A.M. - - - - - Frank R. Johnson Recorder.

Deed Record Book # 54, Page 235.