

SECTION CORNER RECORD

VERMILLION COUNTY SURVEYOR'S OFFICE

NB5
& NB6

State Plane grid coordinates NAD83 (2011):

Corner 1 (NB5): North: 1699036.99 East: 2839057.04 (U.S. survey feet)

Corner 2 (NB6): North: 1698682.86 East: 2839059.74 (U.S. survey feet)

Type and depth of monument: VCS Monument (3-inch diameter steel disk in concrete)

Corner 1: VCS Monument (3-inch diameter steel disk in concrete)

Corner 2: VCS Monument (3-inch diameter steel disk in concrete)

Indiana tie card references:

IN02_T17NR10W21_80 IN02_T17NR9W18_72

IN02_T17NR10W28_08 IN02_T17NR9W19_00

CORNER WITNESS DETAIL

SCALE 1" = 100'

SEC. 21, 17 N, R 10 W

- ① S.E. Corner, Section 21
N.E. Corner, Section 28
T 17 N, R 10 W
CORNER REFERENCE: NB5

- ② S.W. Corner, Section 18
N.W. Corner, Section 19
T 17 N, R 9 W
CORNER REFERENCE: NB6

Distance between
monuments: 354.1'

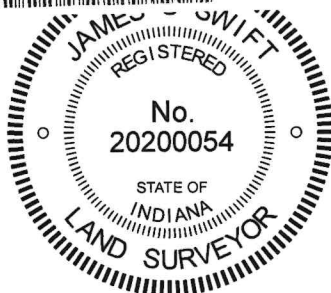
- A - South edge multitrunk walnut, 4' a.g., 23.5' (to ①)
B - Vermillion County witness mark, flush, 16.3' (to ①)
C - N. edge 20 in dia. hackberry, 4' a.g., 41.3' (to ①)
D - E. edge shagbark hickory, 1' a.g., 21.3' (to ②)
E - S. edge 20 in. dia. hardwood, 10.3' (to ②)
F - N. edge double trunk hackberry, 49.1' (to ②)
G - Survey control mark, flush, 206.7' (to ②)
H - Vermillion County witness mark, flush, 175.8' (to ①), 179.6' (to ②)

Vermillion County witness mark is a 3/8"
diameter x 2' long rebar bearing a metal cap
stamped "Vermillion County Witness Point."

Survey control mark is a 3/8" diameter x 2'
long rebar bearing a red plastic cap stamped
"Control Point."

SEC. 28, 17 N, R 10 W

2026000242 SECT COR \$0.00
02/09/2026 01:30:15P 2 PGS
Florinda A Pruitt
Vermillion County Recorder IN
Recorded as Presented



Ronald A. Mack, County Surveyor

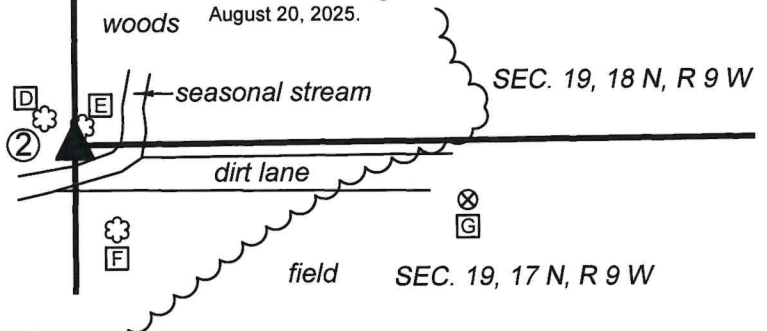
James S. Swift, IN LS 20200054

February 6, 2026

The Vermillion County Monument (steel disk in concrete labelled 'VCS') at Corner 2, being the corner of Sections 18 and 19, Township 17 North, Range 9 West, was set in place of a wood corner post found. The post was standing when we found it but was easily broken off with the slightest pressure. We excavated around the base of the post and set the 'VCS' monument partially in place of and partially over the base of the old corner post.

The 'VCS' monument at Corner 1, being the corner of Sections 21 and 28, Township 17 North, Range 10 West, was set in place of a stone found at the intersection of fragments of fence found to the north, south, and west. In searching for the corner, we found substantial evidence of an old fence corner, including looped, multi-strand wire of the type typically found at corner posts and the braces proximate to said posts. We did not find the post around which this wire had been looped. The post appears to have rotted or been removed. The stone amidst the wire fragments fell at the easterly prolongation of fence to the west and generally in-line with fragments of fence found to the north and south.

It is noted that these corners fall along the range line between Ranges 9 and 10 West. This is not a standard range line, as the sections to the east were surveyed in from the east and the sections to the west were surveyed in from the west, with fractional parts of sections on each side of the range line. Both corners act as closing corners. A standard corner was set in 1819, but was never held as a corner of the sections to the west and essentially disappeared during subdivision of the adjoining townships. The original federal field notes and plats do not contain information, that we have found, referencing the distance between the two closing corners. The 'VCS' monuments marking these corners were both set on August 20, 2025.



Section 21 T17N, R10W	Section 18 T17N, R9W
Section 28 T17N, R10W	Section 19 T17N, R9W

VERMILLION COUNTY SURVEYOR'S OFFICE

NB5
& NB6

PHOTOGRAPHIC DOCUMENTATION

Date of photography: AUGUST 20, 2025



Closeup view of stone as found
(NB5, Corner 1)



The VCS monument set in place of stone
(NB5, Corner 1)



The wood corner post as found
(NB6, Corner 2)



The VCS monument set in place of the post
(NB6, Corner 2)

For details and documentation, refer to
related sheet "Section Corner Record."