

SECTION CORNER RECORD

VERMILLION COUNTY SURVEYOR'S OFFICE

NB7

State Plane grid coordinates NAD83 (2011):

North: 1698728.71 East: 2844280.15 (U.S. survey feet)

Type of monument: VCS Monument (3-inch diameter steel disk in concrete)

Depth: three inches above grade

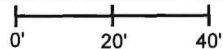
Indiana tie card references:

IN02_T17NR9W18_80 IN02_T17NR9W17_72

IN02_T17NR9W19_08 IN02_T17NR9W20_00

CORNER WITNESS DETAIL

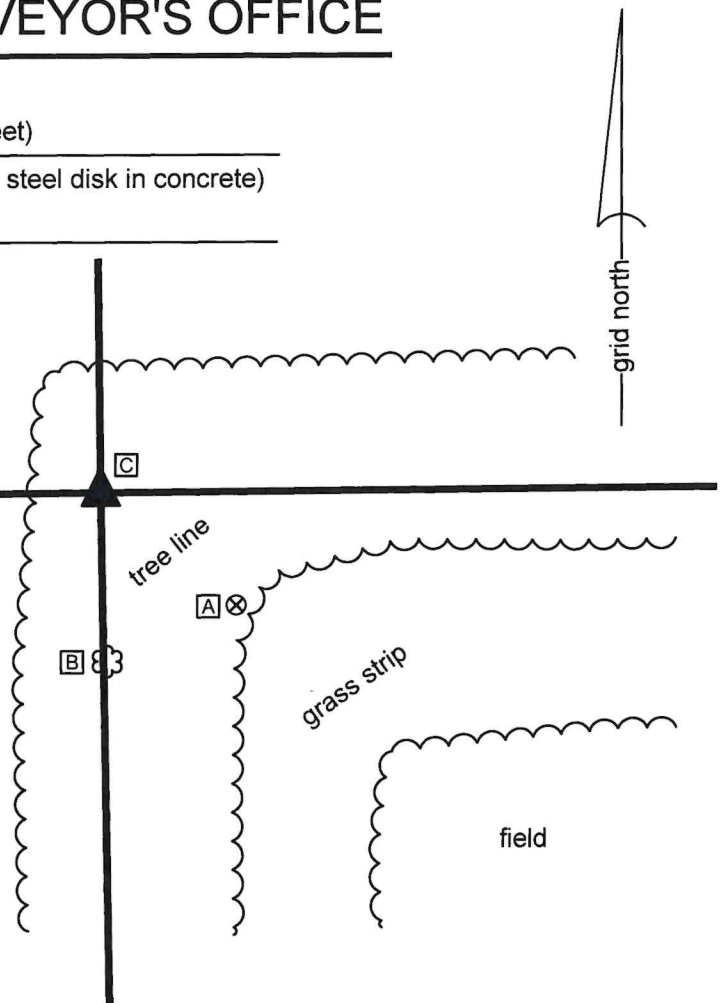
SCALE 1" = 40'



- A - Vermillion County witness mark, flush, 36.7'
- B - N. edge 32" dia. walnut, 4' a.g. 35.2'
- C - S.W. edge 12" cherry, flush, 1.4'

Vermillion County witness mark is a 3/8" diameter x 2' long rebar bearing a metal cap stamped "Vermillion County Witness Point."

2026000241 SECT COR \$0.00
02/09/2026 01:29:08P 2 PGS
Florinda A Pruitt
Vermillion County Recorder IN
Recorded as Presented



The Vermillion County Monument (steel disk in concrete labeled 'VCS') was set in place of a stone found. The stone was found 1.3 feet northeast of the base of a steel corner post. As found, the post was bent and broken off. The stone is in-line with a tree line to the east and south. This stone is shown as marking the corner on several previous surveys, including a survey by James C. Tibbett recorded in Survey Record 1, page 305 and a survey by Gregory D. Williams recorded as Instrument 2018001231, all in the Office of the Vermillion County Recorder. The stone fits well with evidence of occupation to the east and south and fits well with the relative locations of proximate corners. The stone was accepted as the best available evidence of the corner. The stone was removed and replaced with the 'VCS' monument on August 21, 2025



Ronald A. Mack 2/9/26
Ronald A. Mack, County Surveyor

James S. Swift

James S. Swift, IN LS 20200054

February 6, 2026

Eugene
Township

Vermillion
Township

Section 18 T17N, R9W	Section 17 T17N, R9W
Section 19 T17N, R9W	Section 20 T17N, R9W

PHOTOGRAPHIC DOCUMENTATION

Date of photography: April 9, 2025



The stone as found and viewed from the South



High point on stone as found and
viewed from the South