

SECTION CORNER RECORD

NE2-S.5

VERMILLION COUNTY SURVEYOR'S OFFICE

State Plane grid coordinates NAD83 (2011):

North: 1712383.13 East: 2829673.26 (U.S. survey feet)

Type of monument: Stone

Depth: 2" above grade

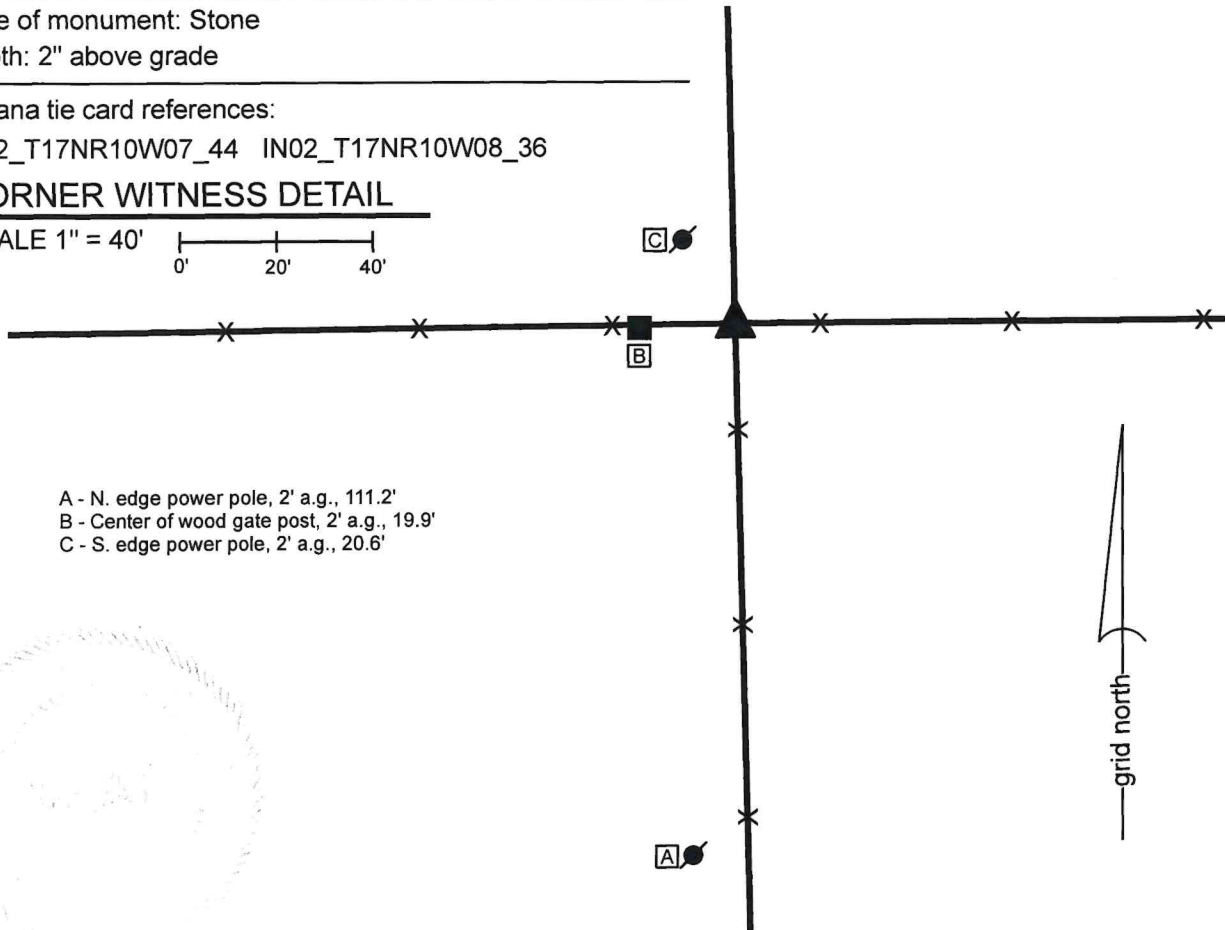
Indiana tie card references:

IN02_T17NR10W07_44 IN02_T17NR10W08_36

CORNER WITNESS DETAIL

SCALE 1" = 40'

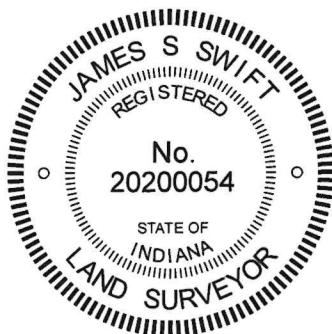
0' 20' 40'



A - N. edge power pole, 2' a.g., 111.2'
B - Center of wood gate post, 2' a.g., 19.9'
C - S. edge power pole, 2' a.g., 20.6'

The stone was found in place and held as marking the corner. This stone is situated at the north edge of a wood corner post at the intersection of fences to the east, west, and south, providing evidence of the historically occupied position of this corner. As found, the stone was leaning toward the north. We stood the stone upright and packed sufficient earth around for stability. We did not find previous Vermillion County records documenting this stone nor did we find surveys recorded in the Office of the Vermillion County Recorder referencing it. However, the position of the stone fits well with the relative position of proximate corners. Being located at the base of the old wood corner post, the stone is accepted as the best available evidence of the original position of the corner.

2026000239 SECT COR \$0.00
02/09/2026 01:23:19P 2 PGS
Florinda A Pruitt
Vermillion County Recorder IN
Recorded as Presented



Ronald A. Mack
Ronald A. Mack, County Surveyor

2/9/26

James S. Swift

James S. Swift, IN LS 20200054

February 6, 2026

Eugene Township

Section 7 T17N, R10W	Section 8 T17N, R10W
-------------------------	-------------------------

PHOTOGRAPHIC DOCUMENTATION

Date of photography: April 1, 2025



The stone as found and viewed from the N.W.



The stone, stood up and emplaced, as viewed from the N.W.



The stone, after backfilling, as viewed from the N.W.

For details and documentation, refer to related sheet "Section Corner Record."