

# SECTION CORNER RECORD

NE3-S.5

## VERMILLION COUNTY SURVEYOR'S OFFICE

State Plane grid coordinates NAD83 (2011):

North: 1712408.39 East: 2835045.42 (U.S. survey feet)

Type of monument: Divot on top of Stone

Depth: 2" above grade

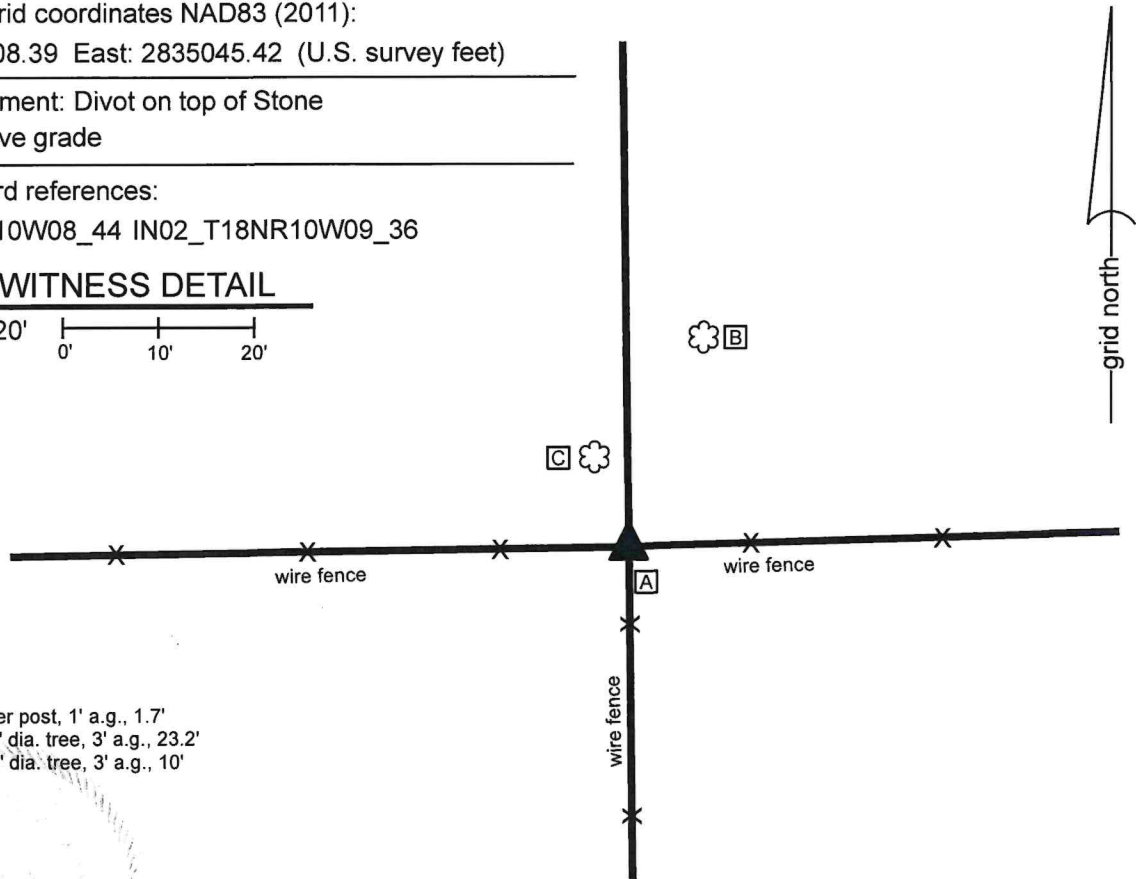
Indiana tie card references:

IN02\_T18NR10W08\_44 IN02\_T18NR10W09\_36

### CORNER WITNESS DETAIL

SCALE 1" = 20'

0' 10' 20'



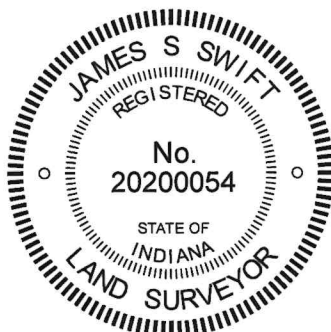
A - Wood corner post, 1' a.g., 1.7'

B - S. edge 18" dia. tree, 3' a.g., 23.2'

C - S. edge 12" dia. tree, 3' a.g., 10'

The stone was found in place and held as marking the corner. The specific position of the corner referenced herein is a shallow divot on the top of the stone. This stone is shown as marking the corner on a previous Vermillion County Monument Record dated June 5, 1993, as referenced to a survey by William L. Clark dated May 11, 1993. The stone is situated slightly north of a wood corner post. A 5/8-inch diameter rebar is located 0.9 foot north of the divot on the stone.

2026000238 SECT COR \$0.00  
02/09/2026 01:21:50P 2 PGS  
Florinda A Pruitt  
Vermillion County Recorder IN  
Recorded as Presented



*Ronald A. Mack*  
Ronald A. Mack, County Surveyor

2/9/26

*James S. Swift*

James S. Swift, IN LS 20200054

February 6, 2026

Eugene Township

Section 8 T18N, R10W	Section 9 T18N, R10W
-------------------------	-------------------------

## PHOTOGRAPHIC DOCUMENTATION

Date of photography: April 1, 2025



Close-up overhead view of the stone



The stone as found and viewed from the East



The stone as found and viewed from the North

For details and documentation, refer to  
related sheet "Section Corner Record."