

SECTION CORNER RECORD

NR3-S.5-E.5

VERMILLION COUNTY SURVEYOR'S OFFICE

State Plane grid coordinates NAD83 (2011):

North: 1782102.90 East: 2837041.82 (U.S. survey feet)

Type of monument: Rebar with metal cap

Depth: 16" below grade

Indiana tie card references:

IN02_T19NR10W04_40

CORNER WITNESS DETAIL

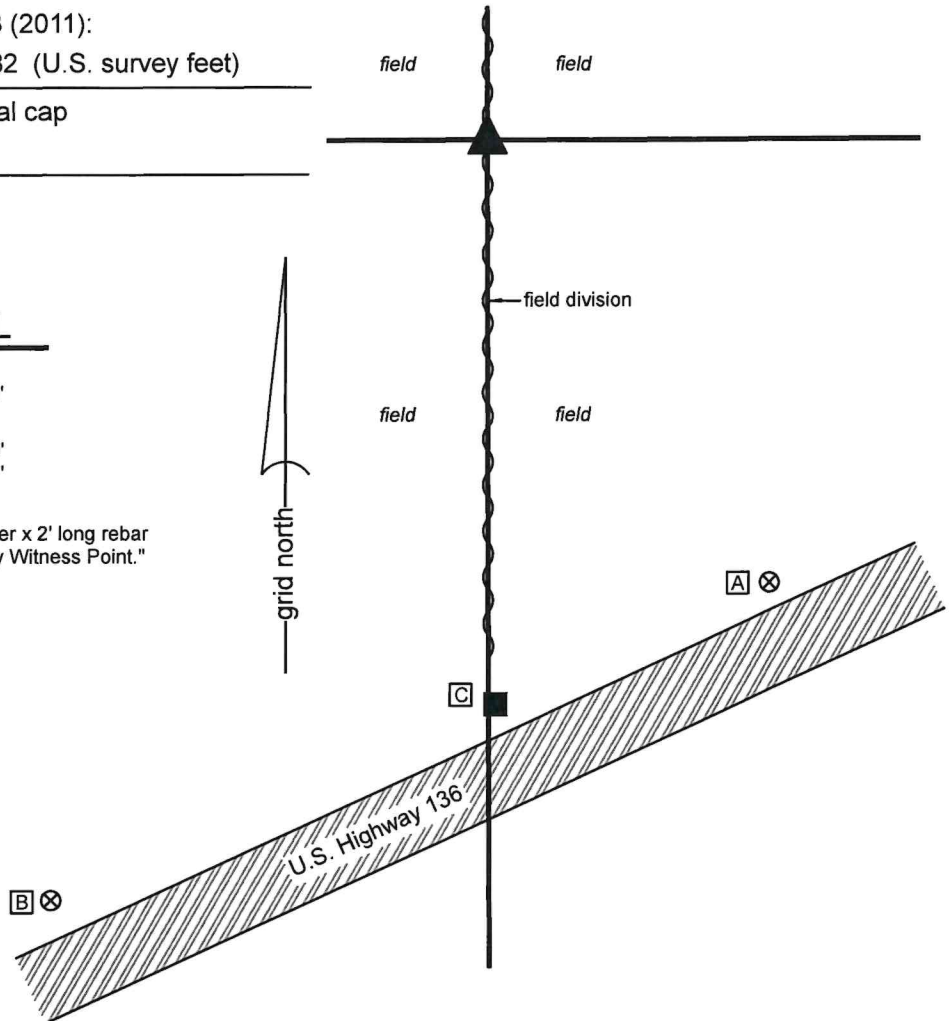
SCALE 1" = 80' 0' 40' 80'

A - Vermillion County witness mark, flush, 218.9'

B - Vermillion County witness mark, flush, 364.7'

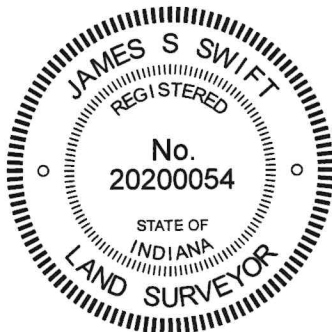
C - Wood corner post, flush, 234.8'

Vermillion County witness mark is a 3/8" diameter x 2' long rebar bearing a metal cap stamped "Vermillion County Witness Point."



The rebar with Vermillion County cap was set at a computed position based on a survey by William J. Hudson recorded as Instrument 2000-00992 in the Office of the Vermillion County Recorder. The Hudson survey states that a rebar was set at this corner, but that monument has been destroyed, presumably by agricultural equipment. The current monument was set at 16 inches deep to avoid disturbance. An uncertainty of approximately 0.5 foot in all directions should be attributed to the position of this corner based on the relative positions of other monuments found and shown on the Hudson survey and the geometry indicated by that survey. The rebar was set on April 10th, 2024.

2026000232 SECT COR \$0.00
02/09/2026 01:10:27P 2 PGS
Florinda A Pruitt
Vermillion County Recorder IN
Recorded as Presented



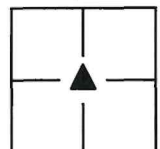
Ronald A. Mack 2/9/26
Ronald A. Mack, County Surveyor

James S. Swift

James S. Swift, IN LS 20200054

February 6, 2026

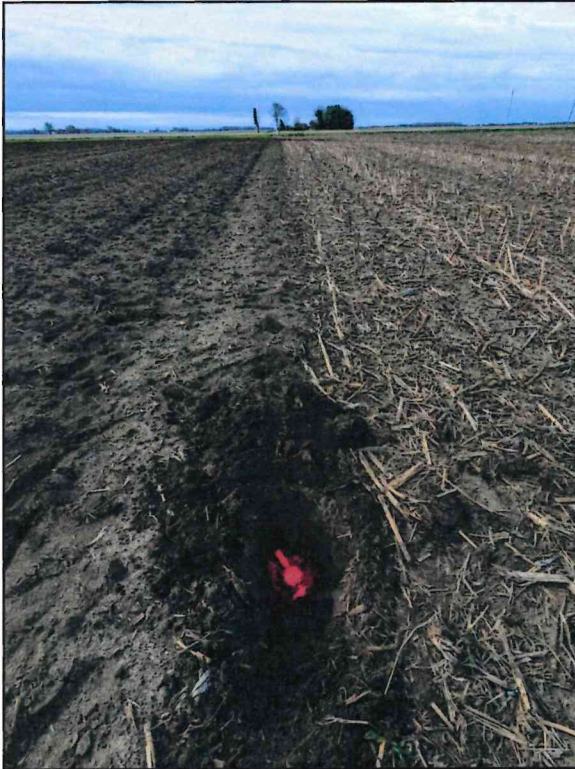
Section 4
T19N, R10W



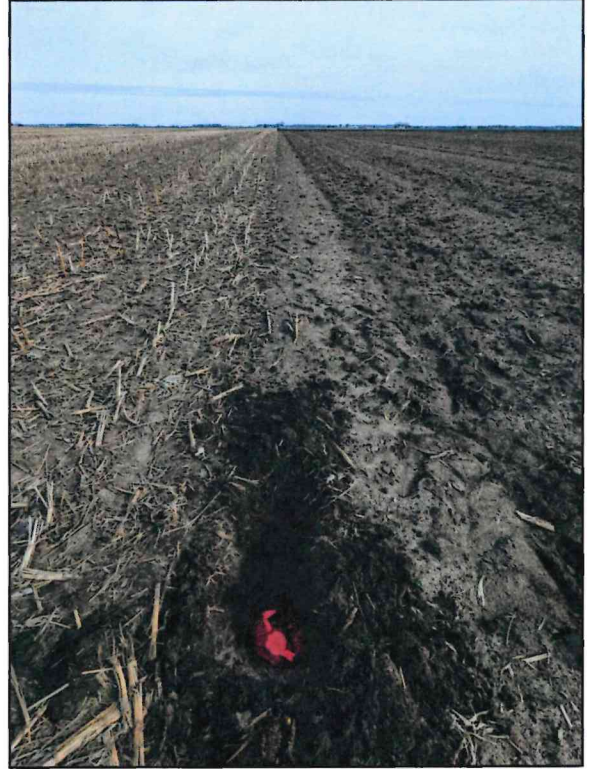
Highland
Township

PHOTOGRAPHIC DOCUMENTATION

Date of photography: April 10, 2024



The rebar as set and viewed from the North



The rebar as set and viewed from the South

For details and documentation, refer to
related sheet "Section Corner Record."